

DESCRIPTION

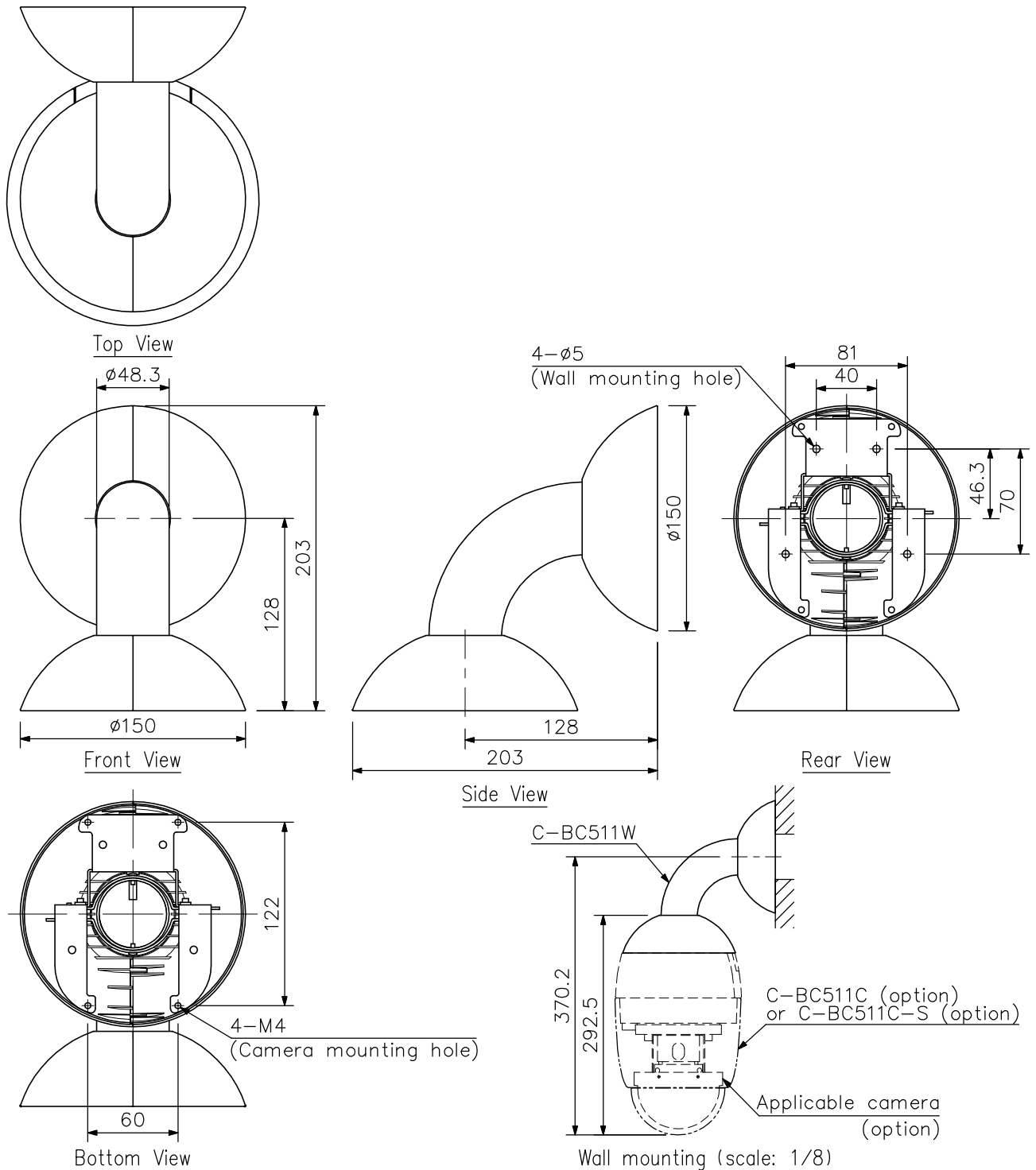
The C-BC511W Wall Mounting Bracket is specially designed to mount TOA's Combination Cameras to wall surfaces.

Install the unit only in a location that can structurally support the weight of the unit and camera.

SPECIFICATIONS

Finish	Top cover: PC/ABS resin, cool gray Pipe: Stainless steel (SUS304) Bracket: Surface-treated steel plate, black, paint
Dimensions	150 (W) × 203 (H) × 203 (D) mm
Weight	1.1 kg
Accessory	Safety wire 1, Top cover 4, Pattern paper 1

APPEARANCE



UNIT:mm SCALE:1/4