

DESCRIPTION

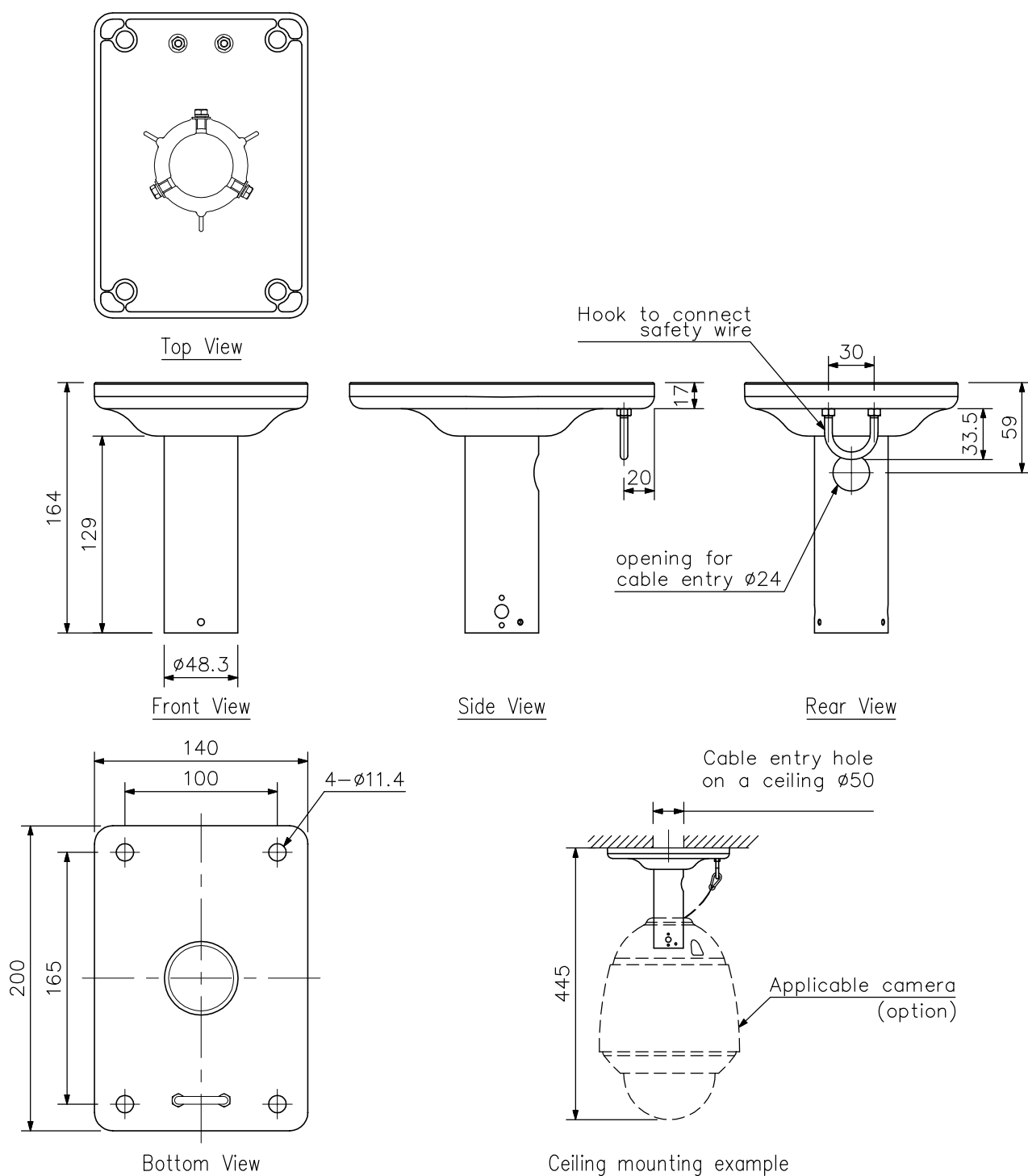
The C-BC711P is exclusively designed to be used to suspend TOA's outdoor combination camera from a ceiling or eaves.

SPECIFICATIONS

Finish	Base: Aluminum, light gray, paint Pipe: Stainless steel (SUS304)
Dimensions	140 (W) × 164 (H) × 200 (D) mm
Weight	1 kg
Accessory	Camera mounting screw (M5 × 12, with washer) ...3

Note: Pay attention to the strength of the attaching portion.

APPEARANCE



UNIT:mm SCALE:1/4