

DESCRIPTION

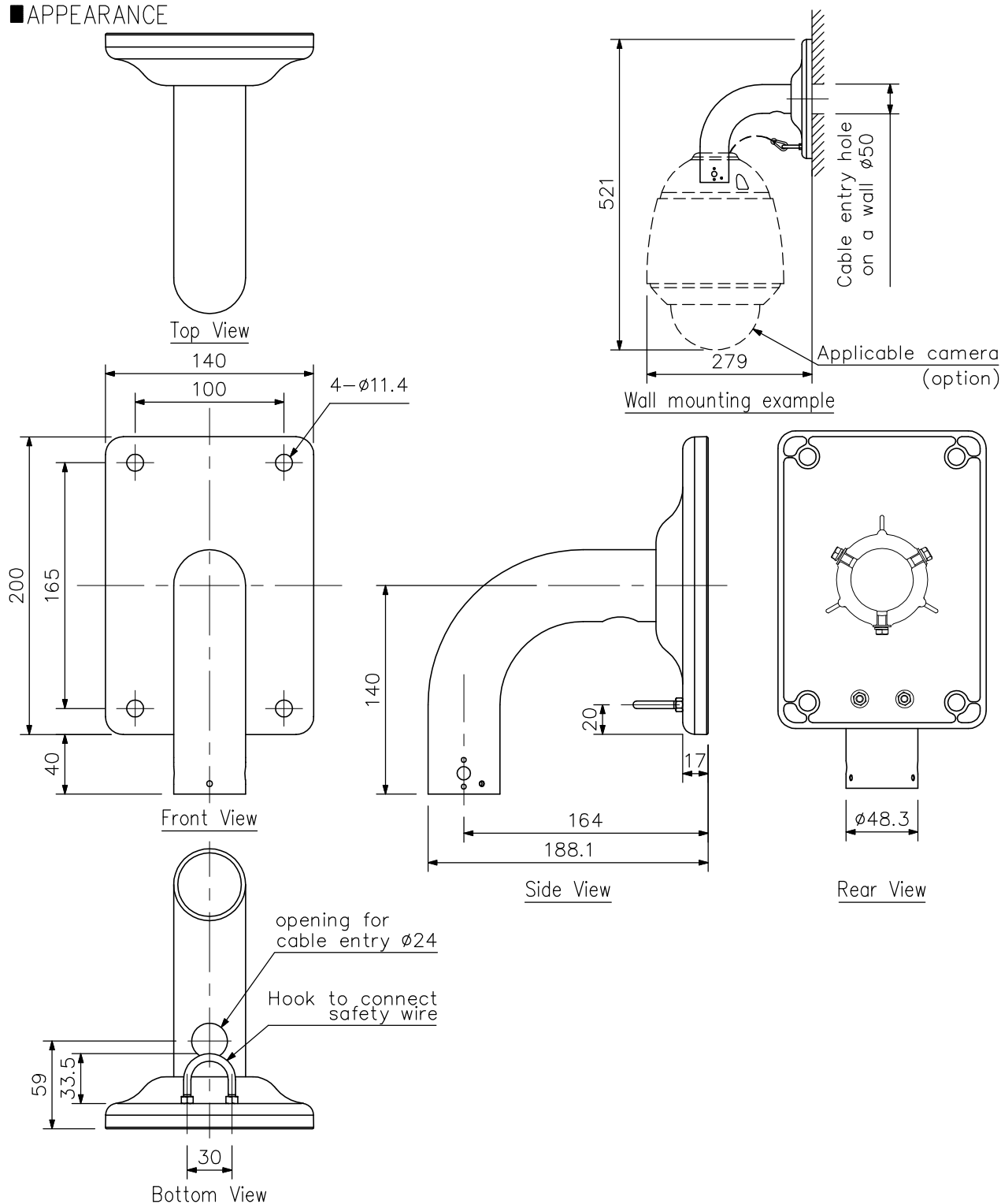
The C-BC711W is designed to be used to mount TOA's outdoor combination camera on a wall.

SPECIFICATIONS

Finish	Base: Aluminum, light gray, paint Pipe: Stainless steel (SUS304)
Dimensions	140 (W) × 240 (H) × 188.1 (D) mm
Weight	1.3 kg
Accessory	Camera mounting screw (M5 × 12, with washer) ...3

Note: Pay attention to the strength of wall surface.

APPEARANCE



UNIT:mm SCALE:1/4