

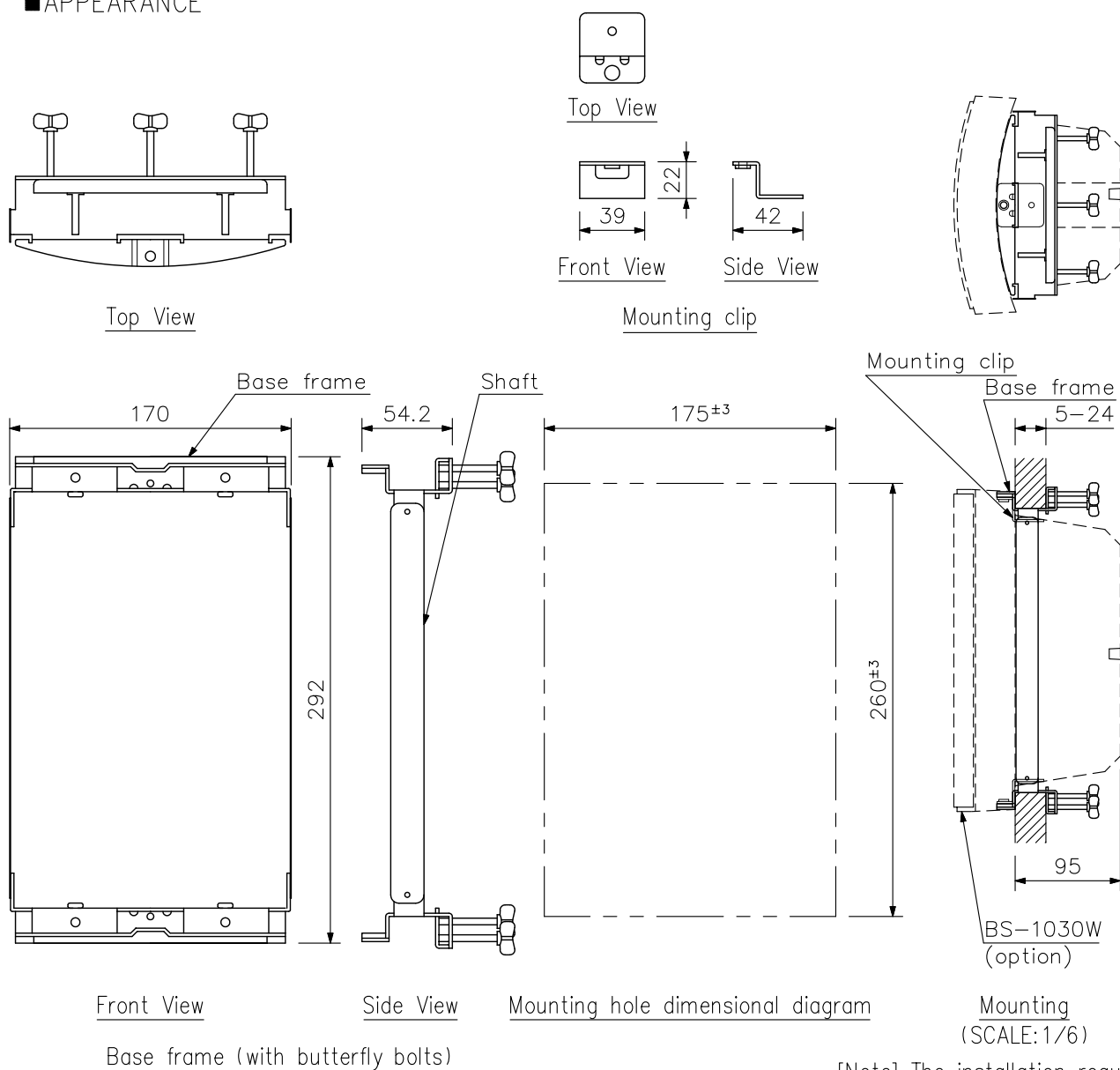
DESCRIPTION

The SP-420 is a bracket designed to exclusively mount the BS-1030W Universal Speaker in a wall or ceiling. The bracket can be easily mounted to the surface made of the plaster board or plywood. Make a 175×260 mm hole (tolerance: ± 3 mm) in the wall or ceiling before mounting.

SPECIFICATIONS

Applicable Board Thickness	5 – 24 mm
Finish	Base bracket: Surface treated steel plate, 2.0 mm in thickness, white, paint Shaft: Nickel-plated rolled steel plate, 0.5 mm in thickness Mounting clip: Nickel-plated rolled steel plate, 2.0 mm in thickness
Accessory	Mounting clip screw.....2, Plain washer for mounting clip.....2, Speaker fixing screw.....2, Speaker fixing plain washer.....2, Base frame fixing butterfly bolt.....6 (installed in the base frame)

APPEARANCE



[Note] The installation requires a space of at least 95 mm from the ceiling or wall surface.

UNIT:mm SCALE:1/4