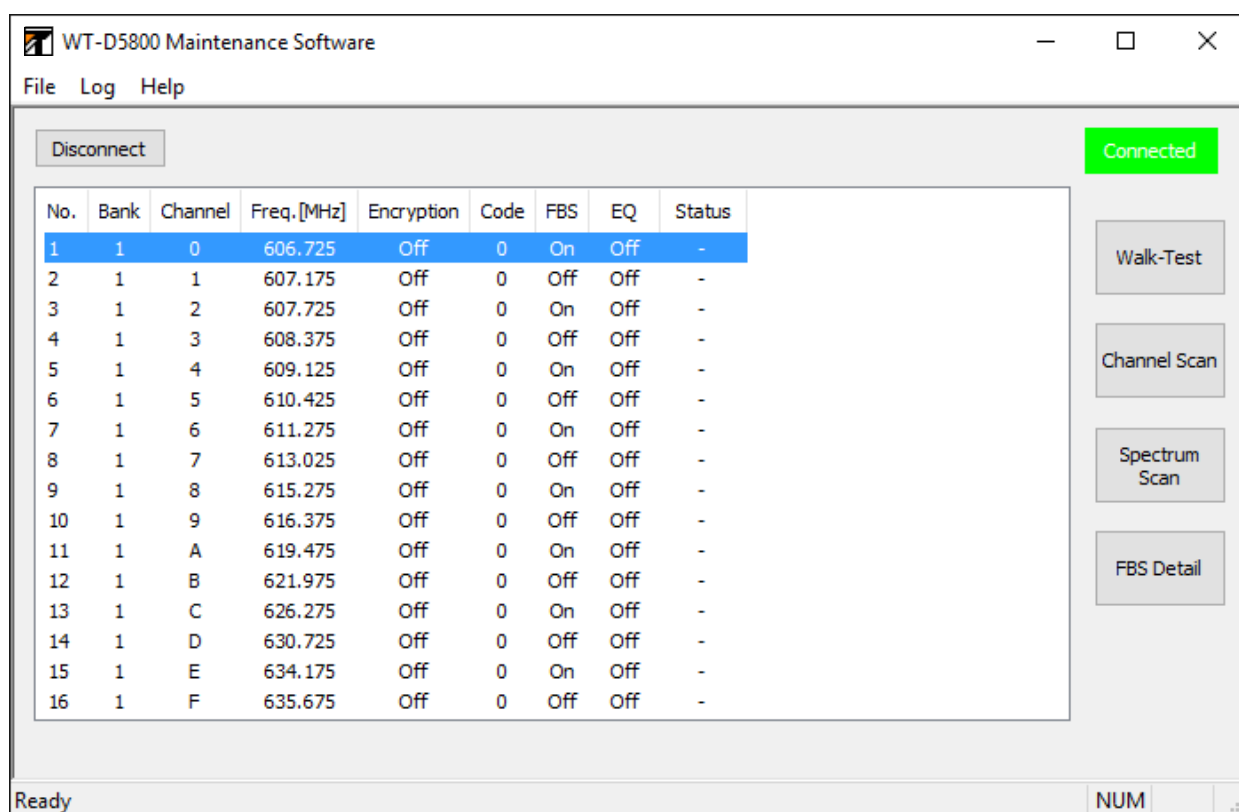




# DIGITAL WIRELESS MICROPHONE SYSTEM WT-D5800 MAINTENANCE SOFTWARE



Thank you for purchasing TOA's digital wireless microphone system.

Please carefully follow the instructions in this manual to ensure long, trouble-free use of your equipment.

# TABLE OF CONTENTS

<b>1. SOFTWARE SUMMARY</b>	3
1.1. Summary	3
1.2. Usage	3
<b>2. INSTALLATION METHOD</b>	4
2.1. Installation of WT-D5800 Maintenance Software	4
2.2. Installation of USB Driver	5
2.3. Check to Make Sure the USB Driver is Installed	6
<b>3. CONNECTION WITH RECEIVERS</b>	7
<b>4. SOFTWARE STARTUP</b>	8
4.1. Menu Configuration	9
<b>5. STARTING CONNECTION WITH RECEIVER</b>	10
<b>6. CHANNEL SCAN</b>	11
6.1. Channel Scan Screen	11
6.2. How to Use Channel Scan Function	12
<b>7. SYSTEM STATUS DISPLAY</b>	14
7.1. Receiver Display	14
7.2. When There is No Sound or the Sound is Disrupted	15
7.3. Checking the Signal Status by Recording the Background Log	16
<b>8. CONDUCTING A WALK-TEST</b>	20
8.1. Walk-Test Screen	20
8.2. How to Conduct a Walk-Test	21
8.3. Checking Walk-Test Log	23
<b>9. CONDUCTING A SPECTRUM SCAN</b>	24
9.1. Spectrum Scan Screen	24
9.2. Conducting a Spectrum Scan	25
9.3. Checking the Spectrum Scan Log	27
<b>10. CHECKING THE SETTING OF THE FBS FUNCTION IN     DETAIL</b>	28
<b>11. STOPPING CONNECTION WITH RECEIVERS</b>	29

# 1. SOFTWARE SUMMARY

## 1.1. Summary

This software connects the WT-D5800 Digital Wireless Receiver with a personal computer, and monitors the status of its microphone and receiver. It is used to check the status of the signal in the area where the microphone is used when the wireless microphone system is set up or when trouble occurs. It has a system status display function and a log storage function. The software allows the user to check the system status when there are reception problems and reviews the setup and operation methods.

The following specifications must be met to install the software onto the computer.

### [Recommended PC environment]

Hardware requirements	
Display	1024 x 768 or greater, High Color or greater
Free hard disk space	200 MB or greater
USB	USB 2.0
Software requirements	
OS	Windows 10 (32/64-bit), Windows 11

**Note:** Windows is the registered trademark of Microsoft Corporation in the United States and other countries.

## 1.2. Usage

It can be used when		Use this function	
Setup	Checking the system status.	System Status Display	<a href="#">p. 14</a>
	Checking unused channels in order to make a channel plan.	Channel Scan	<a href="#">p. 11</a>
	Checking the signal reception status in the area.	Walk-Test	<a href="#">p. 20</a>
After setup	Checking the system status.	System Status Display	<a href="#">p. 14</a>
	Checking unused channels due to possible interference such as sound disruption.	Channel Scan	<a href="#">p. 11</a>
	Checking the status of jamming signals due to possible interference such as sound disruption.	Spectrum Scan	<a href="#">p. 24</a>
	Checking the reception status while the system is in operation due to occasional sound disruption.	Background Log	<a href="#">p. 16</a>

## 2. INSTALLATION METHOD

### 2.1. Installation of WT-D5800 Maintenance Software

#### 2.1.1. Installation method

The newest WT-D5800 Maintenance Software can be downloaded from the TOA website (<http://www.toa-products.com/international/>).

**Step 1.** Execute Setup.exe in the downloaded software folder.  
Starts up the installer.

**Step 2.** Install the software by following the instructions on the screen.  
Creates a shortcut icon on the desktop when the installation is completed.

#### Note

The software can be uninstalled from “Programs and Features” on the PC’s control panel.

#### 2.1.2. Folder configuration

The WT-D5800 Maintenance Software will be installed in the folder below as a default.

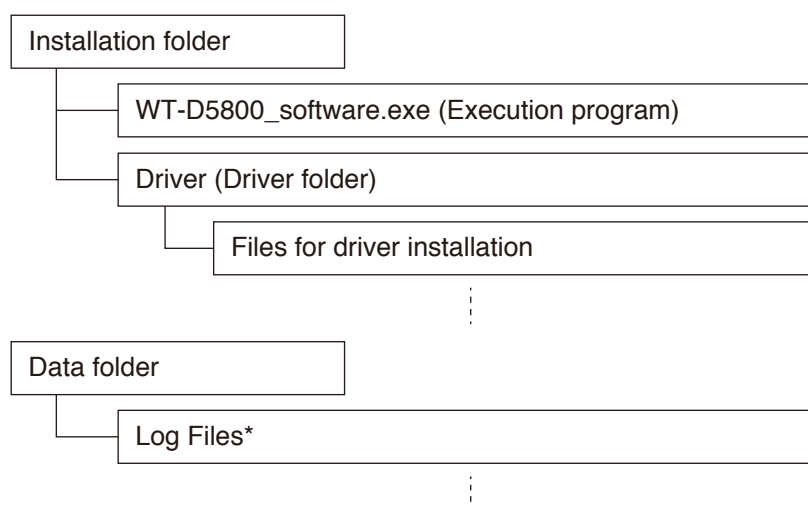
In the case of 32-bit OS: “C:\Program Files\TOA\WT-D5800”

In the case of 64-bit OS: “C:\Program Files (x86)\TOA\WT-D5800”

The installation folder configuration is shown below.

The Log Files created by this software will be stored in the data folder shown below.

C:\ProgramData\TOA\WT-D5800\log



#### Note

The data folder will not be deleted even when the software is uninstalled. Please manually delete all the unnecessary data.

\* The Log Files will automatically be saved under the following names:

[Receiver's No.]\_[Start Recording Date]\_[Serial No.].[Extension]

(Example) 1\_20230801-095326\_001.nlg

The example above shows the Background Log that indicates Receiver 1's recording started at 9:53:26 on August 1st, 2023.

The Log Files will automatically be divided and designated Serial No. when the recording exceeds 24 hours. Depending on the Log, different extensions will be assigned.

Background Log:\*.nlg

Walk-Test Log:\*.wlg

Spectrum Scan Log:\*.slg

File generated from text conversion function:\*.log

## 2.2. Installation of USB Driver

The USB driver is required to be installed in order to connect the WT-D5800 with the PC. There are 2 methods to install the driver.

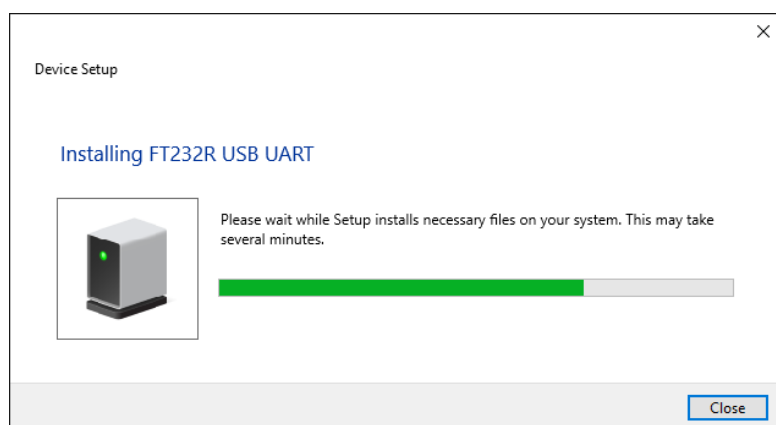
### Tip

The USB driver can occasionally be re-installed when a different USB port is used to connect to the receiver from the one used for the initial driver installation. When this occurs, please wait till the Completion dialog is displayed.

### 2.2.1. Windows update

While the PC is connected to the Internet, connecting WT-D5800 with the PC will automatically take you to the Windows Update Website, and the USB driver required for WT-D5800 will be automatically installed on the PC.

The following screen will be displayed during the driver installation.

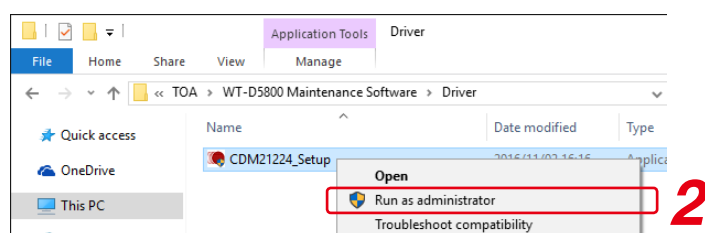


### 2.2.2. Installation of downloaded data

The downloaded WT-D5800 Maintenance Software (See p. 4) folder contains the USB driver data. Select the data to install the driver.

**Step 1.** Open the driver folder in the installation folder.

**Step 2.** Right click on an execution file called “xxxx\_Setup.exe” and select “Run as administrator.”



**Step 3.** Install the driver by following the instructions on the screen.

### Note

After running the execution file, the WT-D5800 must be physically connected to the PC to complete the installation.

### 2.3. Check to Make Sure the USB Driver is Installed

After connecting the WT-D5800 with the PC, the following procedure can be taken to make sure the USB driver is installed correctly.

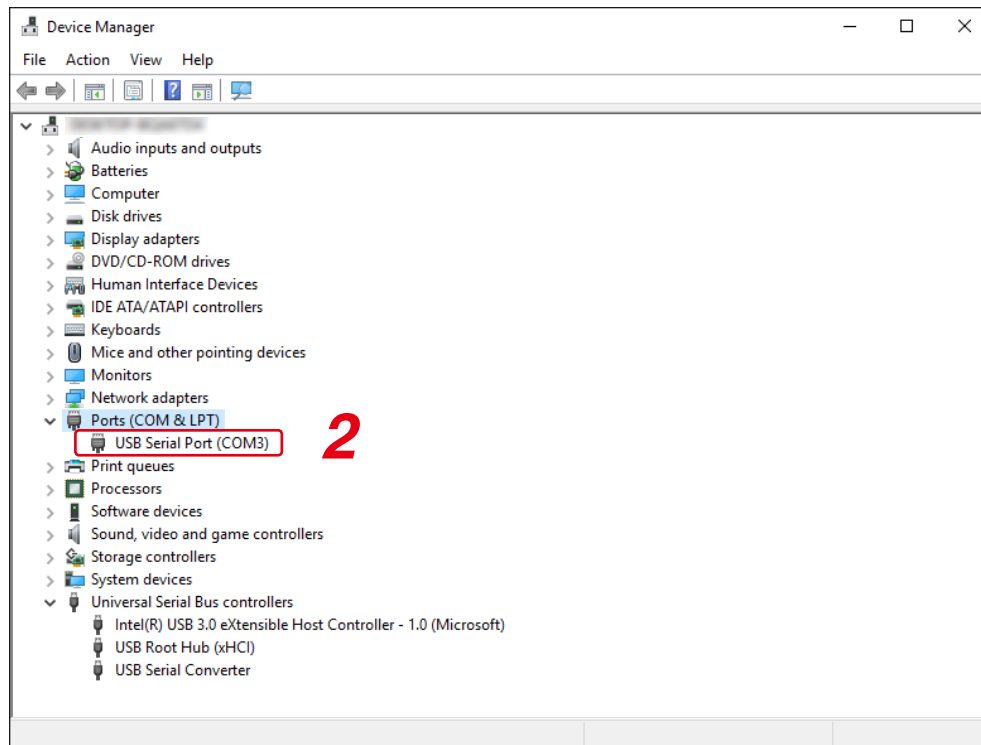
**Step 1.** Start Device Manager.

Right click on the Windows icon on the lower left corner of the screen and then select Device Manager.

**Step 2.** Confirm that “USB Serial Port (COMx\*)” is displayed in the list of displayed Ports (COM & LPT).

If USB Serial Port (COMx\*) is displayed, the USB driver has been securely installed.

\* A port number will be displayed in x.



### 3. CONNECTION WITH RECEIVERS

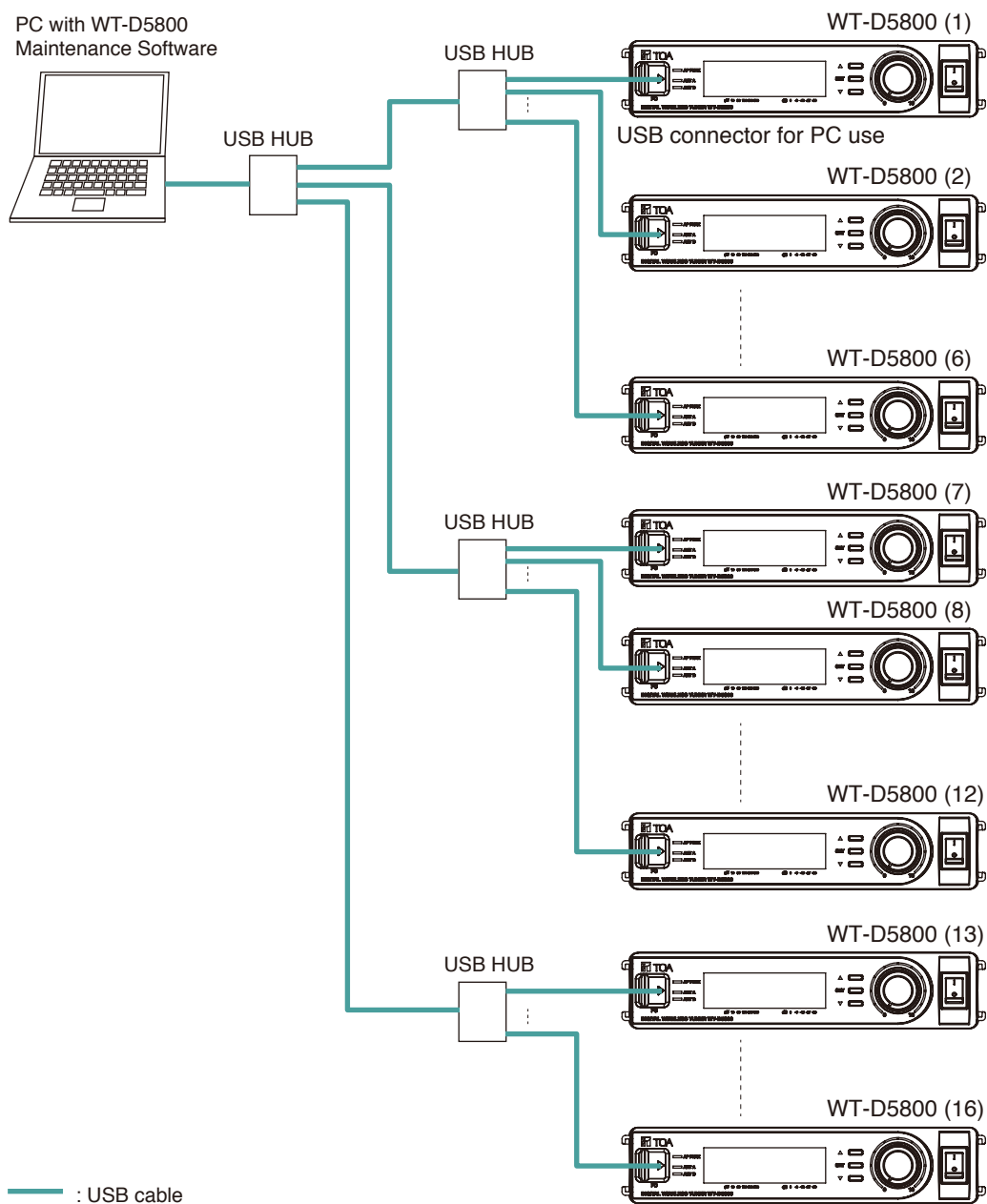
Max. 16 units of WT-D5800 Digital Wireless Receivers can be connected through USB to the PC.  
If there are enough USB ports available on the PC, the receivers can be connected to the computer without using the USB hub.

Use USB 2.0 A connector-pair, B connector type.

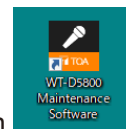
Use USB hubs that fit the shape of the connectors.

#### [Example for connecting 16 receivers]

Connect the PC with each WT-D5800 Digital Wireless Receiver using USB cables.

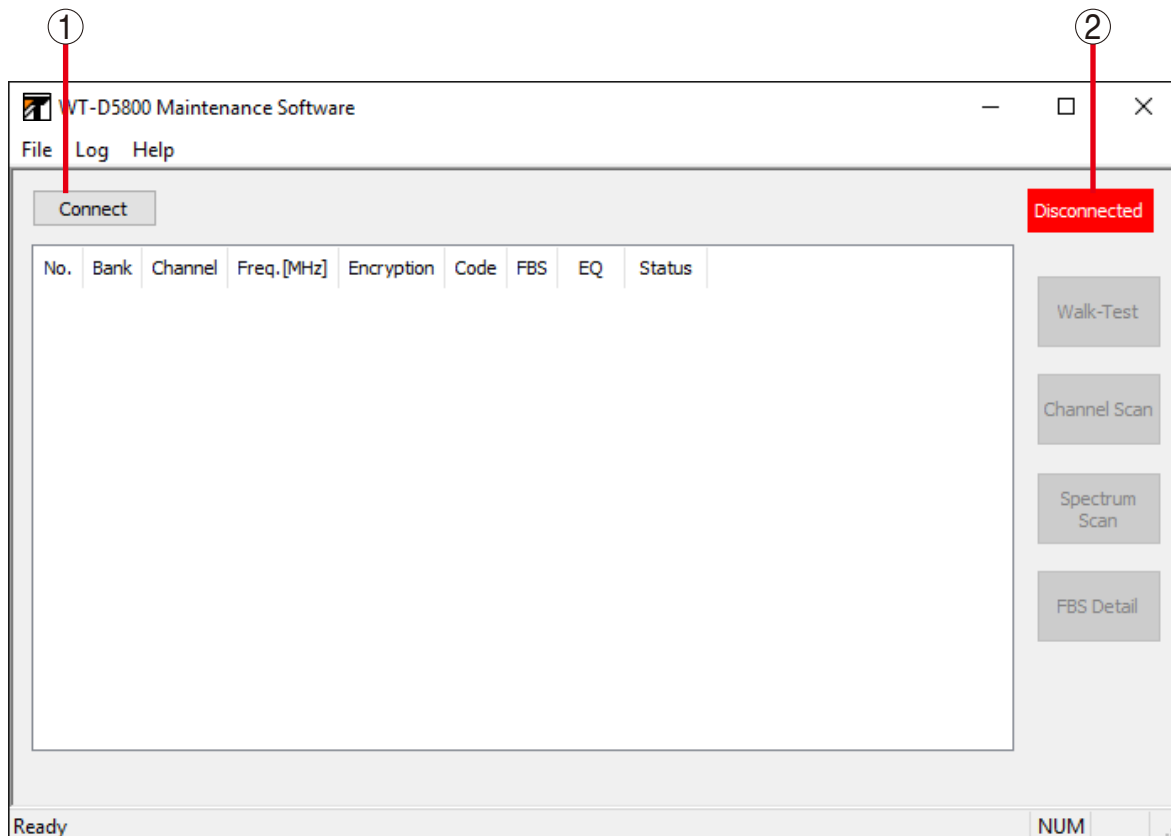


## 4. SOFTWARE STARTUP



The WT-D5800 Maintenance Software will start up on the main screen when the short cut icon on the desktop is clicked after installation.

### [Main screen (Initial screen)]



#### 1. Connect/Disconnect button

Clicking the Connect button will detect the receiver that is connected to the PC through the USB cable and start connecting. Once connecting starts, the button will be switched to the Disconnect button.

Clicking the Disconnect button will stop the connection to the receiver. Once connecting stops, the button will be switched to the Connect button.

#### 2. Connection status display

The screen will display “Disconnected” when it’s not connecting to the receiver.

The screen will display “Connected” when it’s connecting to the receiver.

#### Note

See [p. 10](#) for the Connected display, [p. 29](#) for the Disconnected display.



## 4.1. Menu Configuration

### 4.1.1. File

Exit: Exits the application.

### 4.1.2. Log

#### [Background Log]

Records the reception status log for all the connected receivers. (See [p. 16.](#))

Start Recording: Starts storing the log. Can be used only during the connection. (See [p. 17.](#))

Stop Recording: Stops storing the log. (See [p. 17.](#))

View Log Data: Opens the screen to display the log files in graphs. (See [p. 18.](#))

Convert to Text: Opens the screen where the log files are converted into text. (See [p. 19.](#))

Open Log Folder: Opens the data folder in Explorer. (See [p. 4.](#))

#### [Walk-Test Log]

Records the reception status log during the Walk-Test. (See [p. 23.](#))

View Log Data: Opens the screen to display the log files in graphs. (See [p. 23.](#))

#### [Spectrum Scan Log]

Records the reception status log during the Spectrum Scan. (See [p. 27.](#))

View Log Data: Opens the screen to display the log files in graphs. (See [p. 27.](#))

### 4.1.3. Help

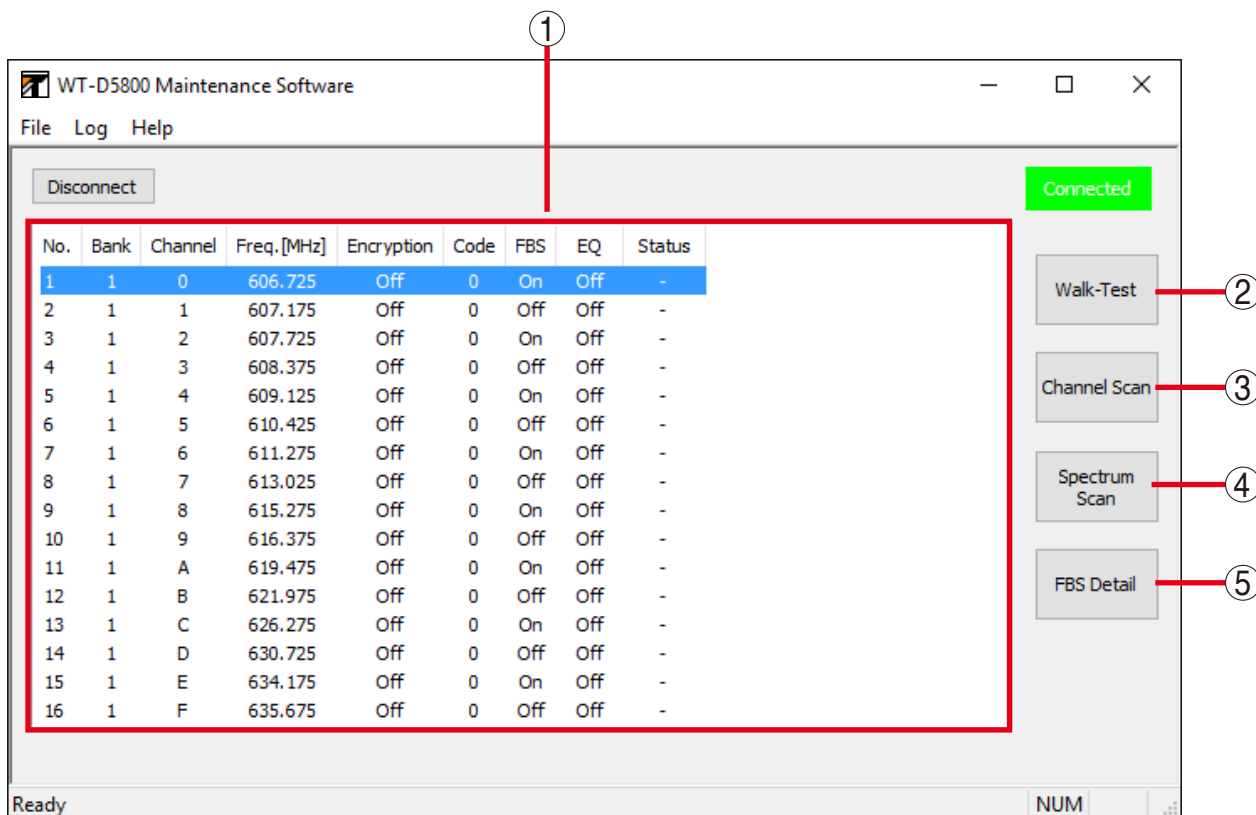
About: Displays versions of the WT-D5800 Maintenance Software and WT-D5800 Firmware.

## 5. STARTING CONNECTION WITH RECEIVER

Clicking the Connect button on the main screen will detect receivers in the network, and displays the status of the detected receivers.

One PC can be connected up to Max. 16 receivers.

### [Main screen (Connected)]



#### 1. Receiver Display

Displays the status of the receivers connected through USB to the PC.

#### 2. Walk-Test button

Used to conduct the Walk-Test.  
(See p. 20.)

#### 3. Channel Scan button

Used to check unused channels.  
(See p. 11, "CHANNEL SCAN.")

#### 4. Spectrum Scan button

Used to check interference.  
(See p. 24, "CONDUCTING A SPECTRUM SCAN.")

#### 5. FBS Detail button

Used to display the FBS filter parameter or its ON/OFF status. (See p. 28.)

### Note

Do not put the PC to sleep or in hibernation during the Connected status.  
It will stop the connection.

Depending on the PC setting, the PC can be automatically set to hibernation or sleep. Change the setting if necessary.

## 6. CHANNEL SCAN

The Channel Scan function checks signal strength for all the channels that belong to specified banks and shows the results.

It also receives the channels of the specified banks in order, and measures the reception of each channel.

It checks for other signals in the vicinity (neighborhood facilities, etc) before making a channel plan.

It can be used for specified banks, or for checking the channel usage situation by specifying banks.

For purposes other than those mentioned above, use the Channel Scan function on the receivers.

### Tips

- When the receivers' Channel Scan function is used, it checks for the combination of banks that can be synchronously used and have the largest number of available channels among all the channels, and displays the channels that can be used within that bank.
- See the receiver's instruction manual for the detailed functions.

### 6.1. Channel Scan Screen



#### 1. No.

Displays the receiver's number.

#### 2. Scan result display

Shows the channels in the horizontal axis and the reception level on the vertical axis as a graph.

#### 3. Marker

Clicking or dragging the graph on the screen will show the channel and reception level on the Marker display (4).

#### 4. Marker display

Displays the channel and reception level of the marker. Clicking the right or left "Channel" button will change the marker location.

Marker (3) will move along with the channels.

#### 5. Start Scan button

Starts scanning the bank specified in the Bank setting (7).

Scanning will continue until the Stop Scan button is clicked.

#### 6. Stop Scan button

Stops scanning.

#### 7. Bank setting

Selects a bank to be scanned.

#### 8. Peak Hold function ON/OFF

Sets the display when the same channel is repeatedly scanned.

Clicking the check box will turn the Peak Hold function ON, and unclicking it will turn the function OFF.

ON: Displays the higher reception level results by comparing the newest results with the past results.

OFF: Overwrites the graph with the newest results.

## 6.2. How to Use Channel Scan Function

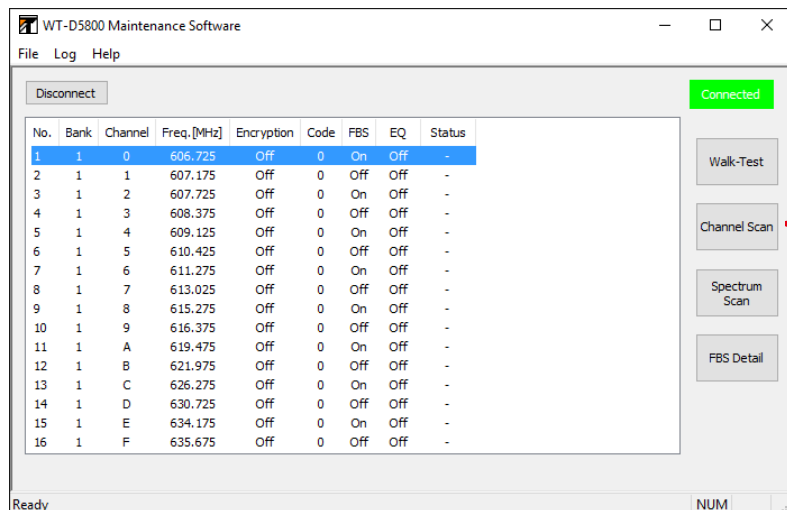
### Note

The Channel Scan function cannot be used while the Walk-Test, storing Background Log, or Spectrum Scan is executed, or while the detailed settings of the FBS function are shown.

**Step 1.** Turn off all the microphone switches.

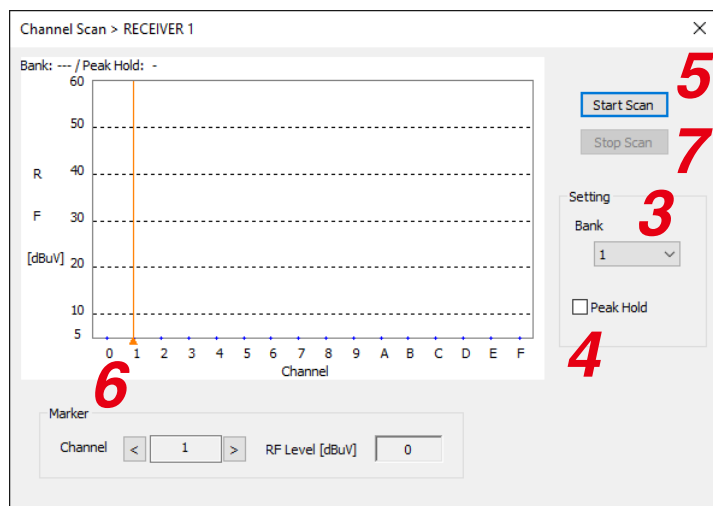
**Step 2.** Select a receiver that is connected from the list on the main screen and click on the Channel Scan button.

[Main Screen]



Displays the Channel Scan screen.

[Channel Scan Screen]



**Step 3.** Select a bank to be scanned.

**Step 4.** Click the check box to set the Peak Hold function if necessary.

**Step 5.** Click on the Start Scan button.  
Channel Scan will start.

**Step 6.** Operate the marker if necessary.

Clicking or dragging the graph on the screen will show the channel with the Marker and reception level on the Marker display, so the reception level can be checked by numbers.

The channels with smaller reception levels can be considered available.

**Step 7.** Click on the Stop Scan button.

Channel Scan will stop.

**Step 8.** Make a channel plan according to the results.

The channels with higher reception are considered in use.

Check the frequency table sheet supplied with the receiver, and decide channels to use by avoiding the channels with high reception levels.

**Note**

The interference situation can change daily.

When the situation changes, review the channel plan.

## 7. SYSTEM STATUS DISPLAY

### 7.1. Receiver Display

Checks the receiver status on the Receiver Display.  
The receiver's setting will be displayed as below.

No.	Bank	Channel	Freq. [MHz]	Encryption	Code	FBS	EQ	Status
1	1	0	606.725	Off	0	On	Off	-
2	1	1	607.175	Off	0	Off	Off	-
3	1	2	607.725	Off	0	On	Off	-

#### 1. No.

Displays the receiver's number.  
The number will be automatically assigned at the beginning of the connection.

#### 2. Bank

Displays the assigned bank.

#### 3. Channel

Displays the assigned channel.

#### 4. Frequency

Displays the assigned frequency.

#### 5. Encryption

Displays the ON/OFF status of the Encryption setting.

#### 6. Code

Displays the assigned Code number when the Encryption setting is OFF.

#### 7. FBS

Displays the ON/OFF status of the FBS setting.

#### 8. EQ

Displays the status of the EQ setting.

#### 9. Status

Displays the receiver's status, such as a connection error, during Spectrum Scan.

#### Note

When the following actions are taken after the receiver is connected, the connection error will occur and the Status (9) will display "CommError."

- The power of the receiver is turned off.
- The USB cable is pulled out.
- The PC is put to sleep or in hibernation.

Check to be sure the receiver power is ON, the PC and the receiver are securely connected and the PC is not in sleep or hibernation mode.

## 7.2. When There is No Sound or the Sound is Disrupted

Sign	Possible Cause	Measures
The receiver's reception indicators are unlit.	The frequency (bank, channel) settings for the receiver and the microphone do not match.	Match the frequency settings for the receiver and the microphone.
	The receiver is in the Channel Scan or Spectrum Scan mode.	Check the front panel of the receiver, and cancel the current mode if it is different from what is normally displayed. (Description of each function on <a href="#">p. 11</a> , <a href="#">p. 24</a> .)
	The batteries of the microphone are running low.	If they are rechargeable batteries, recharge them. If they are dry batteries, replace them with new batteries.
The signal level meter's level is low even though the distance between the microphone and the antenna is adequate.	The antenna's attenuator is not set correctly.	Change the attenuator to the correct setting. (See Antenna instruction manual.)
The receiver's reception indicators light red.	The Encryption setting or the code setting does not match even though the banks and channels of the microphone and the receiver are set to match.	All the settings must be matching.
	There is interference that has the same frequency as the microphone.	Change the channel. <b>Note</b> See the Channel Scan function ( <a href="#">p. 11</a> ) about available channels, and see the Spectrum Scan function ( <a href="#">p. 24</a> ) for interference. If the level of interference is weaker than the microphone signal, it may be possible to prevent interference by turning on the antenna's attenuator. However, this will narrow the usage area.
Signs other than those mentioned above.	The distance between the microphone and the antenna is too close.	Be sure to turn on the antenna's attenuator, or to have at least a 3-meter space between the microphone and the antenna.
	The speaker and amplifier are connected incorrectly.	Connect them correctly.

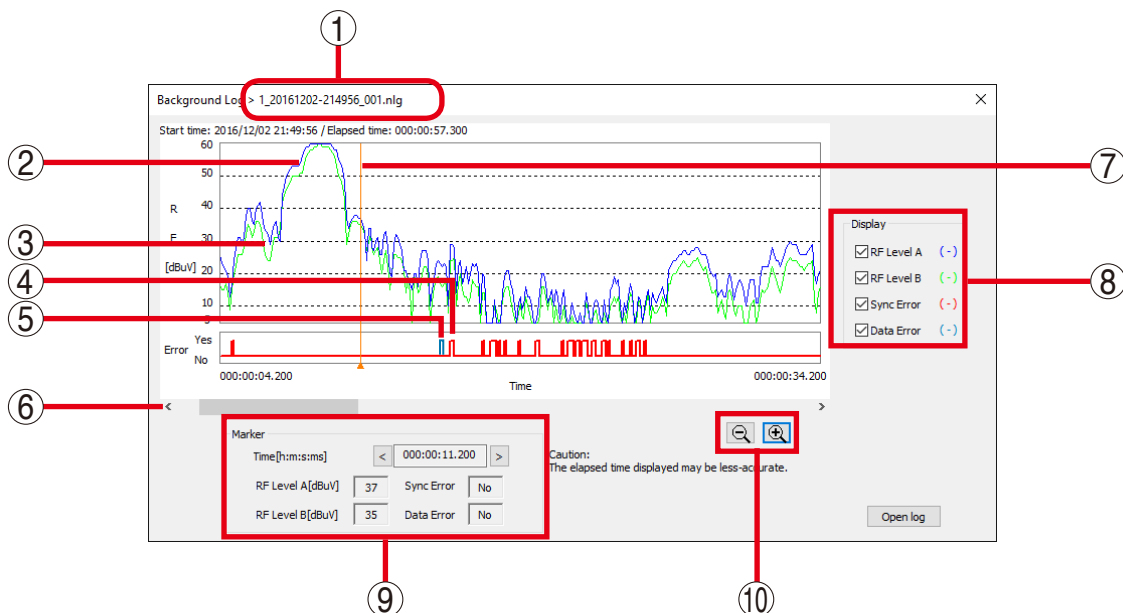
### Note

See the receiver and antenna instruction manuals for detailed information.

## 7.3. Checking the Signal Status by Recording the Background Log

Background Log (RF level A, RF level B, Sync Error, Data Error, Time, Log Start Freq.) can be recorded for all the receivers connected to the PC. The recorded Background Log can be displayed in a graph. It is used to check the signal reception in case of occasional interference, while the system is in operation.

### 7.3.1. Background Log screen



#### 1. File name

Displays the name of the log file (p. 4).

#### 2. RF level A (blue)

Displays the level of radio wave received by Antenna A.

#### 3. RF level B (green)

Displays the level of radio wave received by Antenna B.

#### 4. Sync Error (red)

Shows the synchronization status in which the receiver is receiving signals from the microphone and can output sound.

Sync Error can occur when the settings\* of the receiver and the microphone do not match, or the signal that the receiver is receiving is not strong enough.

This is not shown by default.

\* Encryption setting (ON/OFF status, ID setting) and code setting.

#### 5. Data Error (bluish green)

Shows the data error when the signal is weak or there is interference. This is shown when there is a synchronization error.

This is not shown by default.

#### 6. Scroll button

Scrolls the graph in a horizontal direction.

#### 7. Marker

Clicking or dragging the graph on the screen will show the time and reception level on the Marker display (9).

#### 8. Display Switch

Switches the display ON/OFF for the reception level status, error status, etc.

Displays each status by clicking the check box.

#### 9. Marker display

Displays the time and reception level of the marker. Clicking the right or left button of "Time" will change the marker location.

Marker (7) will move along with the time.

#### 10. Zoom out/Zoom in button

Clicking the zoom out button (-) will lengthen the time shown in the horizontal axis of the graph.

Clicking the zoom in button (+) will shorten the time shown in the horizontal axis of the graph.

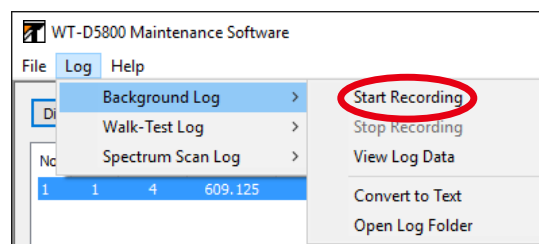


### 7.3.2. Recording Background Log

#### Note

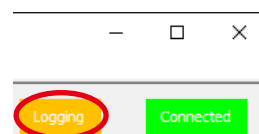
- The Background Log cannot be recorded while the Walk-Test, Channel Scan, or Spectrum Scan is executed, or while the detailed settings of the FBS function are shown.
- The Background Log can only be recorded while the receiver is connected.

**Step 1.** Select [Log → Background Log → Start Recording] from the menu.



Starts recording the Background log.

The screen shows “Logging” at the upper right corner on the main screen during recording.



#### Notes

- Do not turn off or disconnect the receiver while the Background Log is being recorded. This will prevent the Background log from being stored. Restarting recording can be done by following the procedure from **Step 1**.
- The Background Log can be recorded up to Max. 8 hours. Exceeding that will force the recording to end.

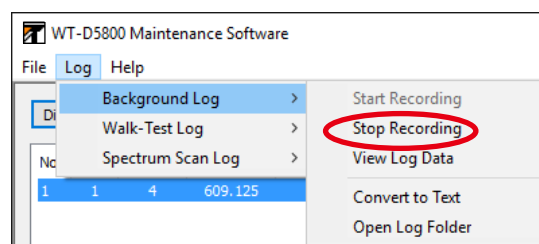
**Step 2.** Select [Log → Background Log → Stop Recording] from the menu.

Stops storing the log.

The log file will be stored in the data folder (p. 4).

See p. 4 for the file name.

The log file will be stored even when logging is stopped or is forcefully ended.



### 7.3.3. Checking the recorded Background Log in a graph.

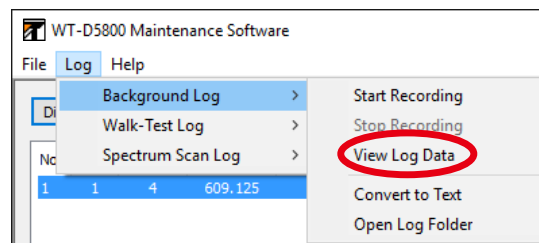
Displays the recorded Background Log data in a graph.

The log file will be stored in the data folder (p. 4).

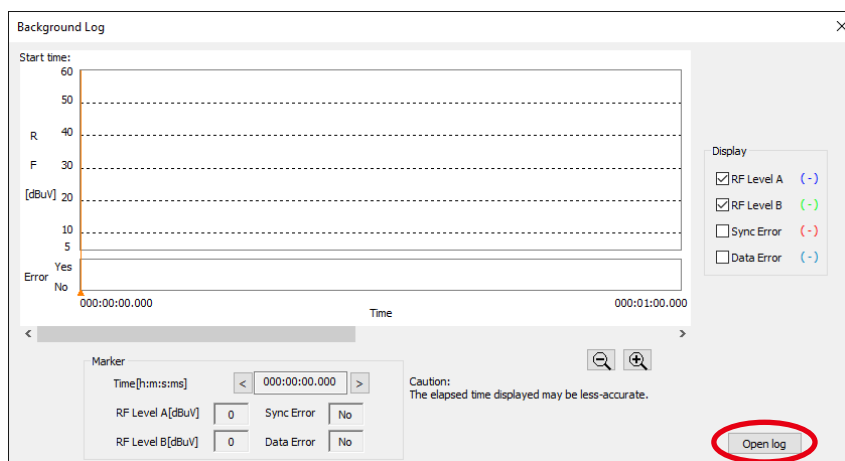
See p. 4 for the file name.

**Step 1.** Select [Log → Background Log → View Log Data] from the menu.

The Background Log screen will be displayed.



**Step 2.** Click the Open Log button.



**Step 3.** Select a Log File.

The selected log data will be displayed on the screen.



**Step 4.** Click a check on the Display Switch to select the graph to be displayed.

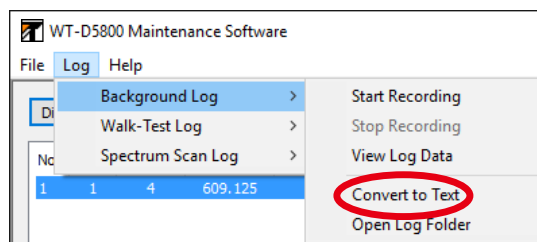
**Step 5.** Use the Marker, Zoom out/Zoom in button if necessary.

### 7.3.4. Checking the recorded Background Log in text format.

Converts the recorded Background Log data into text format, and allows it to be checked in the Text Editor.

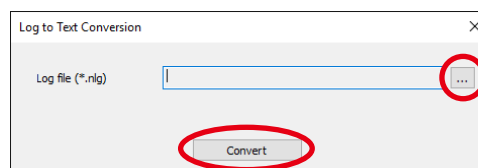
The log file will be stored in the data folder (p. 4).  
See p. 4 for the file name.

**Step 1.** Select [Log → Background Log → Convert to Text] from the menu.

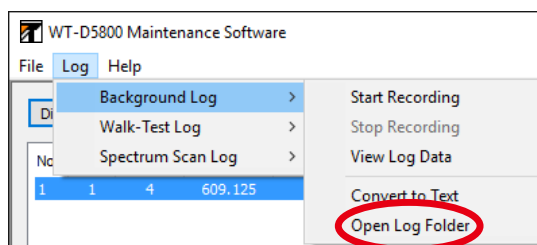


Opens the screen where the log files are converted into text.

**Step 2.** Select a log file and click on the Convert button.  
The converted log file will be stored in the data folder (p. 4).  
See p. 4 for the file name.



**Step 3.** Select [Log → Background Log → Open Log Folder] from the menu.



This will open the log folder in Explorer.

## 8. CONDUCTING A WALK-TEST

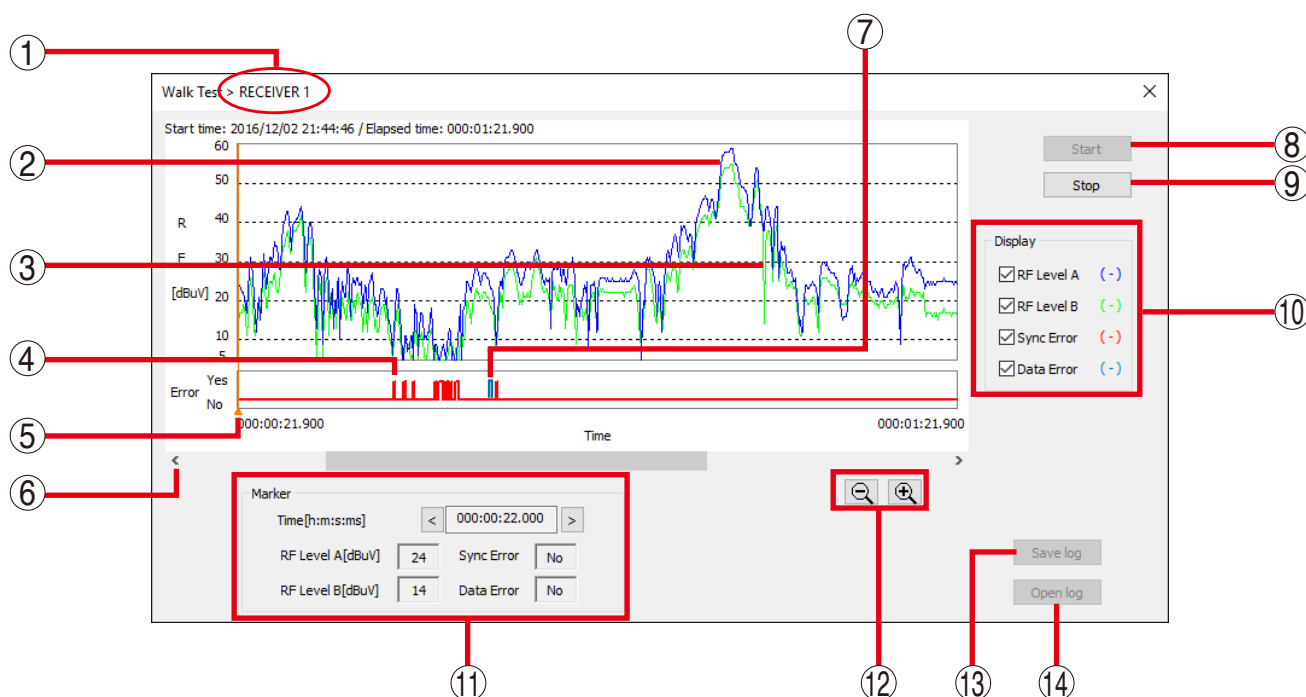
The status of the receiver's signal reception as time shifts can be seen in the graph in real time. Walking around in the area where the wireless microphone is used while its switch is ON in order to check for a stable reception.

This is called a Walk-Test. The reception can be checked without checking the sound through the microphone as was previously required.

### 8.1. Walk-Test Screen

#### Note

There is only one display for the Walk-Test screen.



#### 1. No.

Displays the receiver's number.

#### 2. RF level A (blue)

Displays the level of radio wave received by Antenna A.

#### 3. RF level B (green)

Displays the level of radio wave received by Antenna B.

#### 4. Sync Error (red)

Shows the synchronization status in which the receiver is receiving signals from the microphone and can output sound.

Sync Error can occur when the settings\* of the receiver and the microphone do not match, or the signal that the receiver is receiving is not strong enough.

This is not shown by default.

In order to display this, click a check in "Sync Error" on the Display Switch (10).

\* Encryption setting (ON/OFF status, ID setting) and code setting.

#### 5. Marker

Clicking or dragging the graph on the screen will show the time and reception level on the Marker display (11).

#### 6. Scroll button

Scrolls the graph in the horizontal direction.

#### 7. Data Error (bluish green)

Shows the data error when the signal is weak or there is interference.

This is shown when there is a synchronization error. This is not shown by default.

#### 8. Start button

Starts recording Walk-Test results. Walk-Test will continue until the Stop Test button is clicked.

After an hour, the recording will be forced to end.

#### 9. Stop button

Ends recording of Walk-Test results.

## 10. Display Switch

Switches the display ON/OFF for the reception level status, error status, etc. Displays each status by clicking the check box.

## 11. Marker display

Displays the time and reception level of the marker.

Clicking the right or left button of “Time” will change the marker location.

Marker (6) will move along with the time.

## 12. Zoom out/Zoom in button

Clicking the zoom out button (-) will lengthen the time shown in the horizontal axis of the graph.

Clicking the zoom in button (+) will shorten the time shown in the horizontal axis of the graph.

## 13. Save Log button

Used to save the results of the Walk-Test in a file.

The log file will be stored in the data folder (p. 4).

See p. 4 for the file name.

## 14. Open Log button

Used to open the screen of the past Walk-Test results (Walk-Test Log screen).

Walk-Test log files will be displayed for selection by clicking this button.

## 8.2. How to Conduct a Walk-Test

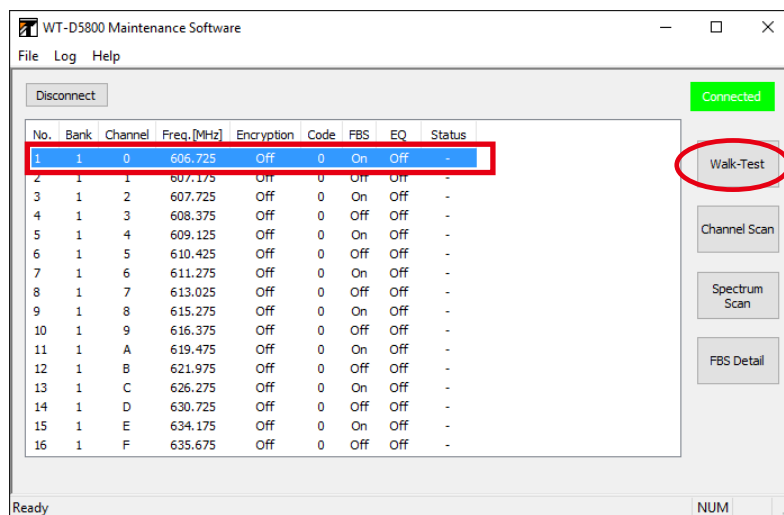
### Note

The Walk-Test cannot be conducted while the Channel Scan, storing Background Log, or Spectrum Scan is executed, or while the detailed settings of the FBS function are shown.

**Step 1.** Set the bank and channel for the microphone and receiver to be used, so that the receiver can receive the microphone signal.

**Step 2.** Select the receiver that will be used to receive the microphone signal from the list of receivers on the main screen, and click the Walk-Test button.

[Main Screen]



The Walk-Test screen will be displayed.

[Walk-Test Screen]



**Note**

There is only one display for the Walk-Test screen.

**Step 3.** Click a check on the Display Switch to select the graph to be displayed.

**Step 4.** Click the Start button.  
The Walk-Test will start.

**Step 5.** Turn on the wireless microphone and walk in the area where the microphone will be used.

**Step 6.** Use the Marker, Zoom out/Zoom in button if necessary.

**Step 7.** Click on the Stop button.  
Ends the Walk-Test.

**Note**

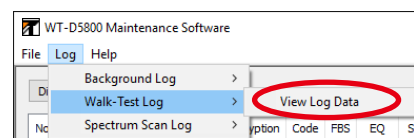
After an hour, the Walk-Test will be forced to end.

**Step 8.** Click on the Save Log button when the result of the Walk-Test needs to be saved as log data.  
The log file will be stored in the data folder (p. 4).  
See p. 4 for the file name.

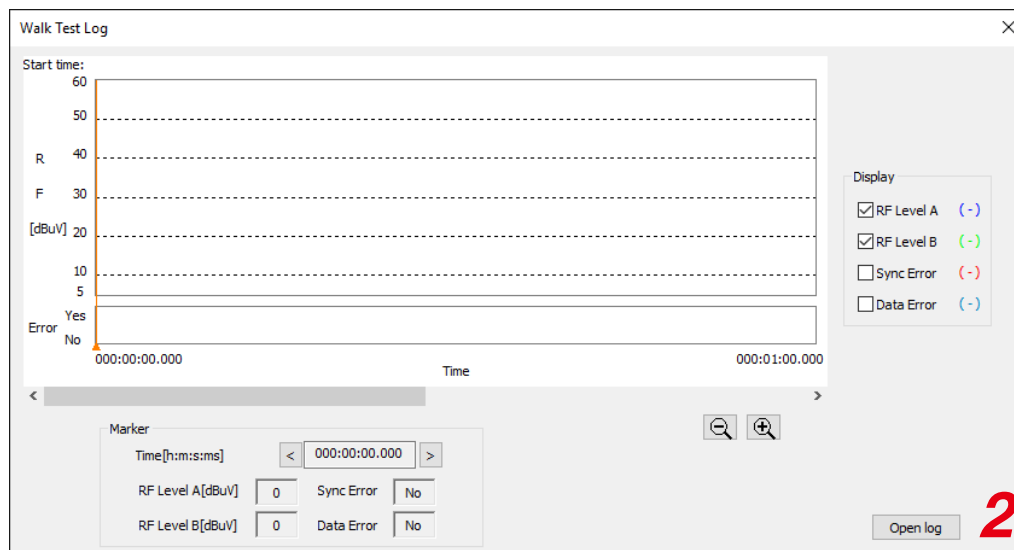
**Step 9.** Analyze the graph and take the appropriate measures if there are any problems.  
When the reception graph shows a dramatic dip where reception seems to be extremely weak, please change the location of the antenna, etc.  
Interference is a possible reason for the Data Error or Sync Error if the reception level does not show any large fluctuations, and seems to be consistently good. In this case, specify the cause of interference by conducting a Channel Scan (p. 11) or Spectrum Scan (p. 24) to prevent it.

### 8.3. Checking Walk-Test Log

**Step 1.** Select [Log → Walk-Test Log → View Log Data] from the menu.



The Walk-Test Log display screen will be displayed.



**Step 2.** Click the Open Log button to specify the log data to be displayed.

The log file will be stored in the data folder (p. 4).

See p. 4 for the file name.

The Walk-Test Log will be displayed.



Except that the file name is displayed, the contents and the operability are the same as those of the Walk-Test screen. There is only one display for the Walk-Test Log screen.

**Step 3.** Use the Marker, Zoom out/Zoom in button if necessary.

## 9. CONDUCTING A SPECTRUM SCAN

The Spectrum Scan function checks the strength of radio wave in the specified frequency range and displays the result. It measures the signal reception for each frequency by receiving the radio wave in the specific interval in the specified frequency range.

When the sound is disrupted, it simply checks for any interference within the specified frequency range without using any special measuring equipment.

The Channel Scan function (p. 11) also checks for any interference in the channel of the specified bank.

### 9.1. Spectrum Scan Screen



#### 1. No.

Displays the receiver's number.

#### 2. Scan result display

Shows the channels in the horizontal axis and the reception level on the vertical axis as a graph.

#### 3. Marker

Clicking or dragging the graph on the screen will show the frequency and reception level on the Marker display (11).

#### 4. Scroll button

Scrolls the graph in the horizontal direction.

#### 5. Start Scan button

Starts scanning. Scanning will continue until the Scan Stop button is clicked.

After 7 days (168 hours), the recording will be forced to end.

#### 6. Stop Scan button

Stops scanning.

#### 7. Step Frequency

Selects the frequency interval from "25 kHz" or "125 kHz."

#### 8. Start Frequency

Selects the Min. frequency for scanning.

#### 9. Stop Frequency

Selects the Max. frequency for scanning.

#### 10. Peak Hold function ON/OFF

Sets the display when the same frequency is repeatedly scanned.

Clicking the check box will turn the Peak Hold function ON, and unclicking it will turn the function OFF.

ON : Displays the higher reception level results by comparing the newest results with the past results.

OFF : Overwrites the graph with the newest results.

#### 11. Marker display

Displays the frequency and reception level of the marker.

Clicking the right or left "Frequency" button will change the marker location.

Marker (3) will move along with the frequency.



## 12. Zoom out/Zoom in button

Clicking the zoom out button (-) will lengthen the time shown in the horizontal axis of the graph. Clicking the zoom in button (+) will shorten the time shown in the horizontal axis of the graph.

## 13. Save Log button

Used to save the record of the Spectrum Scan as a file. The log file will be stored in the data folder (p. 4). See p. 4 for the file name.

## 14. Open Log button

Used to open the screen of the past Spectrum Scan result (Spectrum Scan Log screen). Spectrum Scan log files will be displayed for selection by clicking this button.

## 15. Change View button

Clicking the Change View button will change the horizontal axis to show time for the frequency selected with the marker.

## 9.2. Conducting a Spectrum Scan

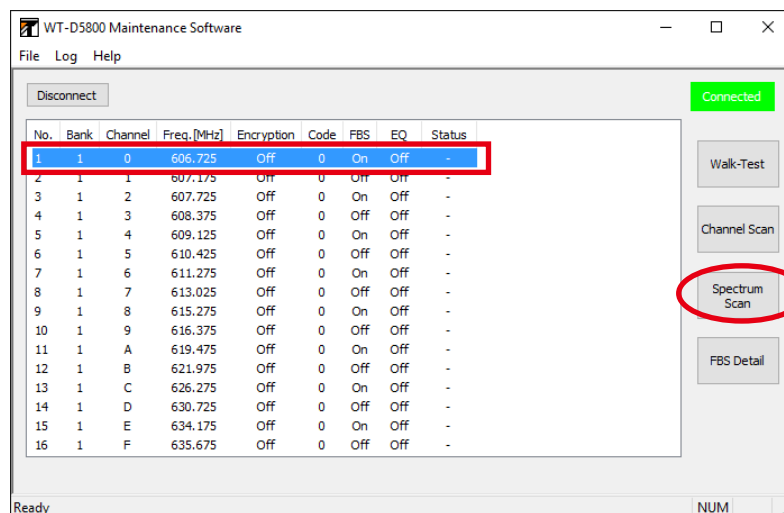
### Note

The Spectrum Scan function cannot be used while the Walk-Test, storing Background Log, or Channel Scan is executed, or while the detailed settings of the FBS function are shown.

**Step 1.** Turn off all the microphone switches.

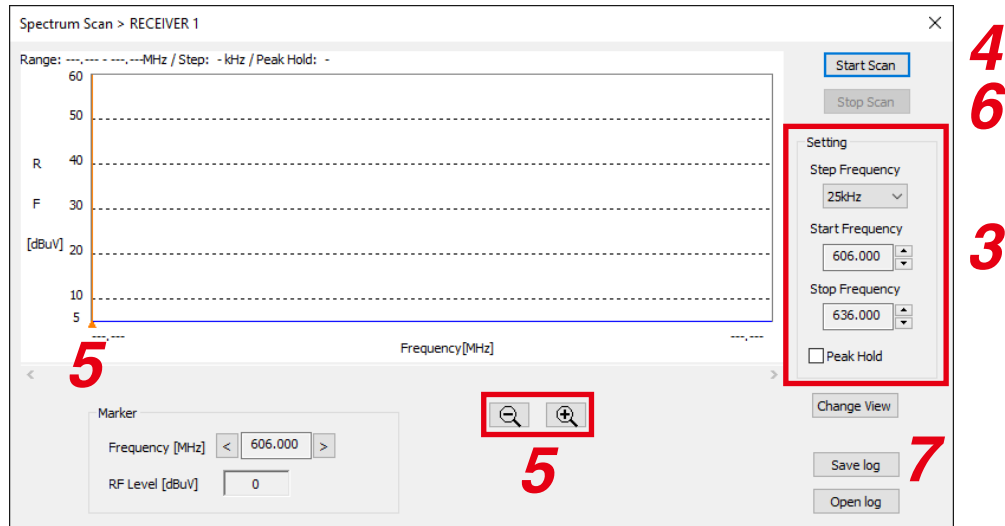
**Step 2.** Select a receiver that is connected from the list on the main screen and click on the Spectrum Scan button.

[Main Screen]



Displays the Spectrum Scan screen.

[Spectrum Scan Screen]



**Step 3.** Set the Step Frequency, Start Frequency, Stop Frequency, and Peak Hold.

**Step 4.** Click on the Start Scan button.  
Starts the Spectrum Scan.

**Step 5.** Use the Marker, Zoom out/Zoom in button if necessary.

**Step 6.** Click on the Stop Scan button.  
Stops the Spectrum Scan.

**Note**

After 7 days (168 hours), the recording will be forced to end.

**Step 7.** Click on the Save Log button when the result of the Spectrum Scan needs to be saved as log data.  
The log file will be stored in the data folder (p. 4).  
See p. 4 for the file name.

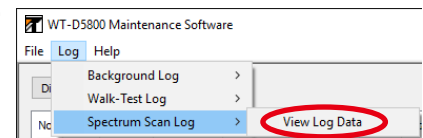
**Step 8.** As a result of the scan, if there is possible interference, change the setting of the antenna's attenuator or the channel.

**Note**

See the receiver's instruction manual for detailed information.

### 9.3. Checking the Spectrum Scan Log

**Step 1.** Select [Log → Spectrum Scan Log → View Log Data] from the menu.

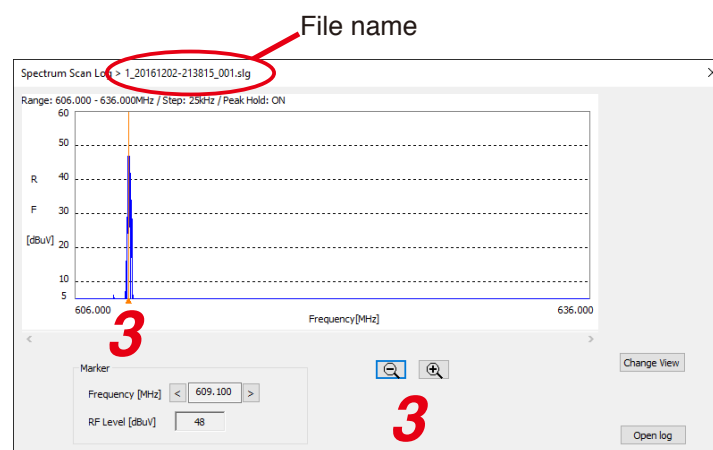


Displays the Spectrum Scan Display screen.



**Step 2.** Click the Open Log button to specify the log data to be displayed.  
The log file will be stored in the data folder (p. 4).  
See p. 4 for the file name.

Displays the Spectrum Scan Log screen.



**Tip**  
Clicking the Change View button will change the horizontal axis to show time for the frequency selected with the marker.

Except that the file name is displayed, the contents and the operability are the same as those of the Spectrum Scan screen.

**Step 3.** Use the Marker, Zoom out/Zoom in button if necessary.

## 10. CHECKING THE SETTING OF THE FBS FUNCTION IN DETAIL

WT-D5800 is equipped with the FBS (Feedback Suppressor) function. Its dynamic mode operation controls acoustic feedback in real time.

The FBS function can be turned ON/OFF in setting mode of the WT-D5800. See the WT-D5800 instruction manual for details.

The WT-D5800 Maintenance Software will show the detailed settings of the FBS function.

### Note

The detailed settings of the FBS function cannot be checked while the Walk-Test, storing Background Log, Channel Scan, or Spectrum Scan is executed.

### Tips

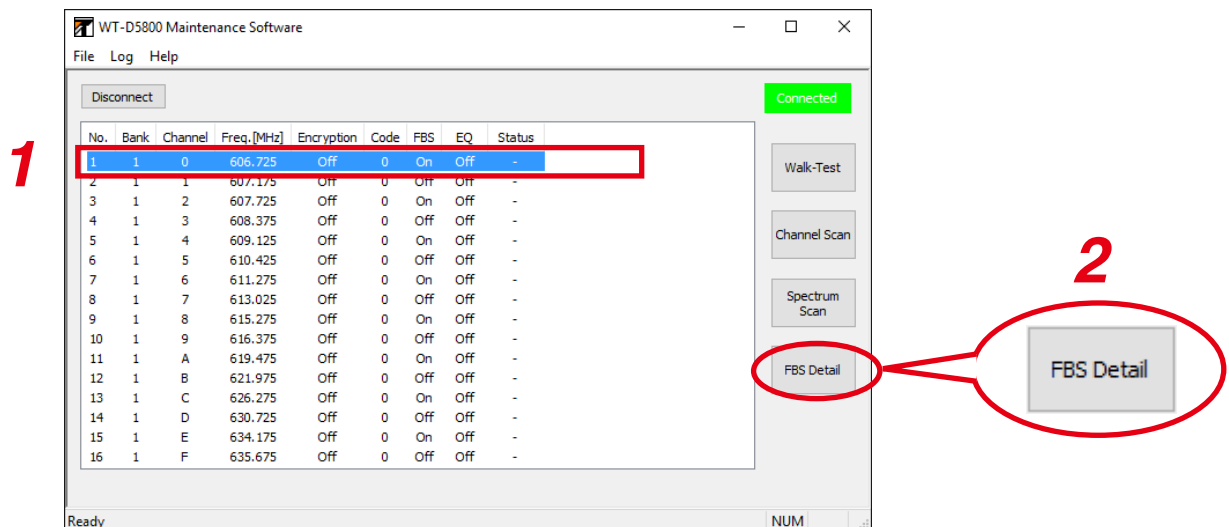
For WT-D5800, the dynamic feedback control function can be set to be turned ON/OFF.

- When the setting is ON, the parameters for the FBS filter will be automatically set to control acoustic feedback dynamically.
- When the setting is OFF, the parameters for the FBS filter will not be set automatically and the feedback will not be controlled dynamically.
- When the function is turned from ON to OFF, or WT-D5800's power is turned OFF, the filter generated automatically during feedback detection with the dynamic mode will be cleared.

### [Checking the Detailed Settings]

**Step 1.** Select a receiver that is connected that needs to be checked from the list on the main screen.

**Step 2.** Click on the FBS Detail button.



Displays the FBS filter's parameters for the selected receiver by showing it in the On/Off format.

The FBS filter's parameters will be automatically set when the acoustic feedback control function is set On.

The setting and setting ranges are shown below.

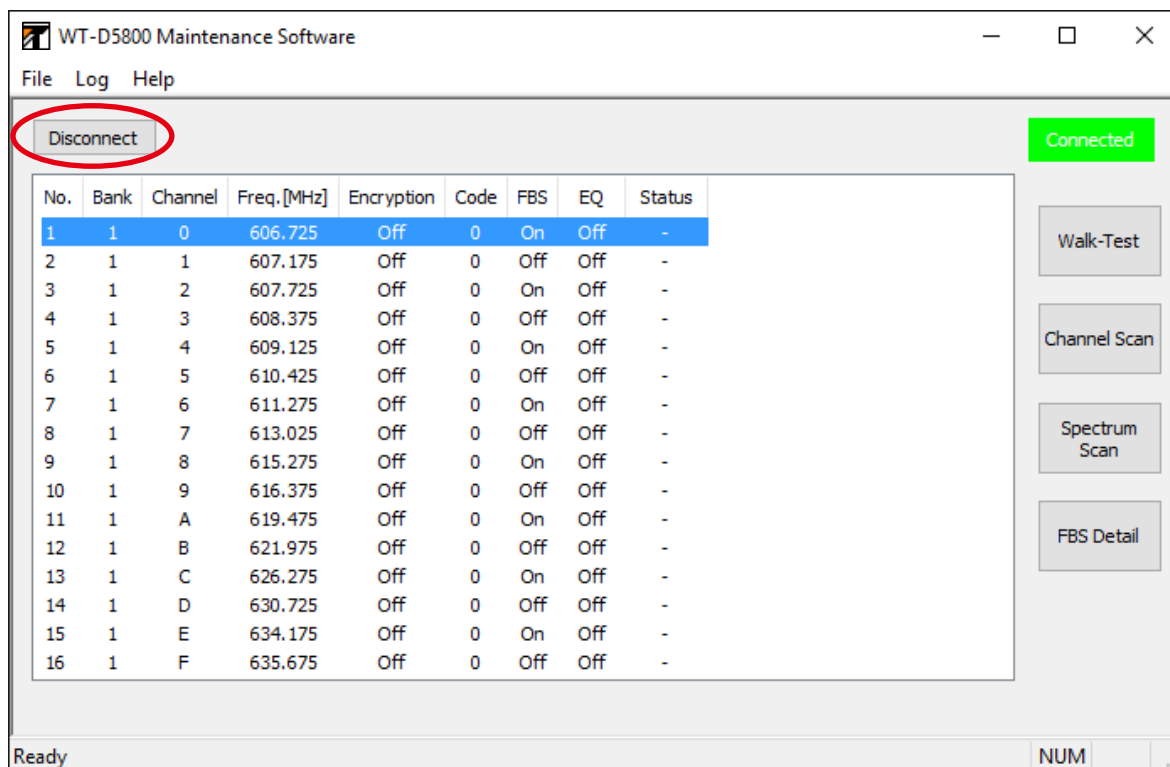
Setting	Setting range
Central frequency	0.06 – 11 (kHz), 1/24 oct step
Gain	–6, –9, –12 (dB)
FBS filter On/Off	On, Off

**Note:** The Q value is 34.623 (fixed).

FBS Detail > RECEIVER 1			
Filter No.	Freq.[kHz]	Gain[dB]	On/Off
1	8.629	-6	On
2	4.637	-9	On
3	1.620	-6	On
4	6.713	-6	On
5	6.422	-6	On
6	-	-	Off
7	-	-	Off

## 11. STOPPING CONNECTION WITH RECEIVERS

Clicking the Disconnect button on the main screen will stop the connection to the receivers.



When the connection is stopped, the information on the receiver display will disappear.

