

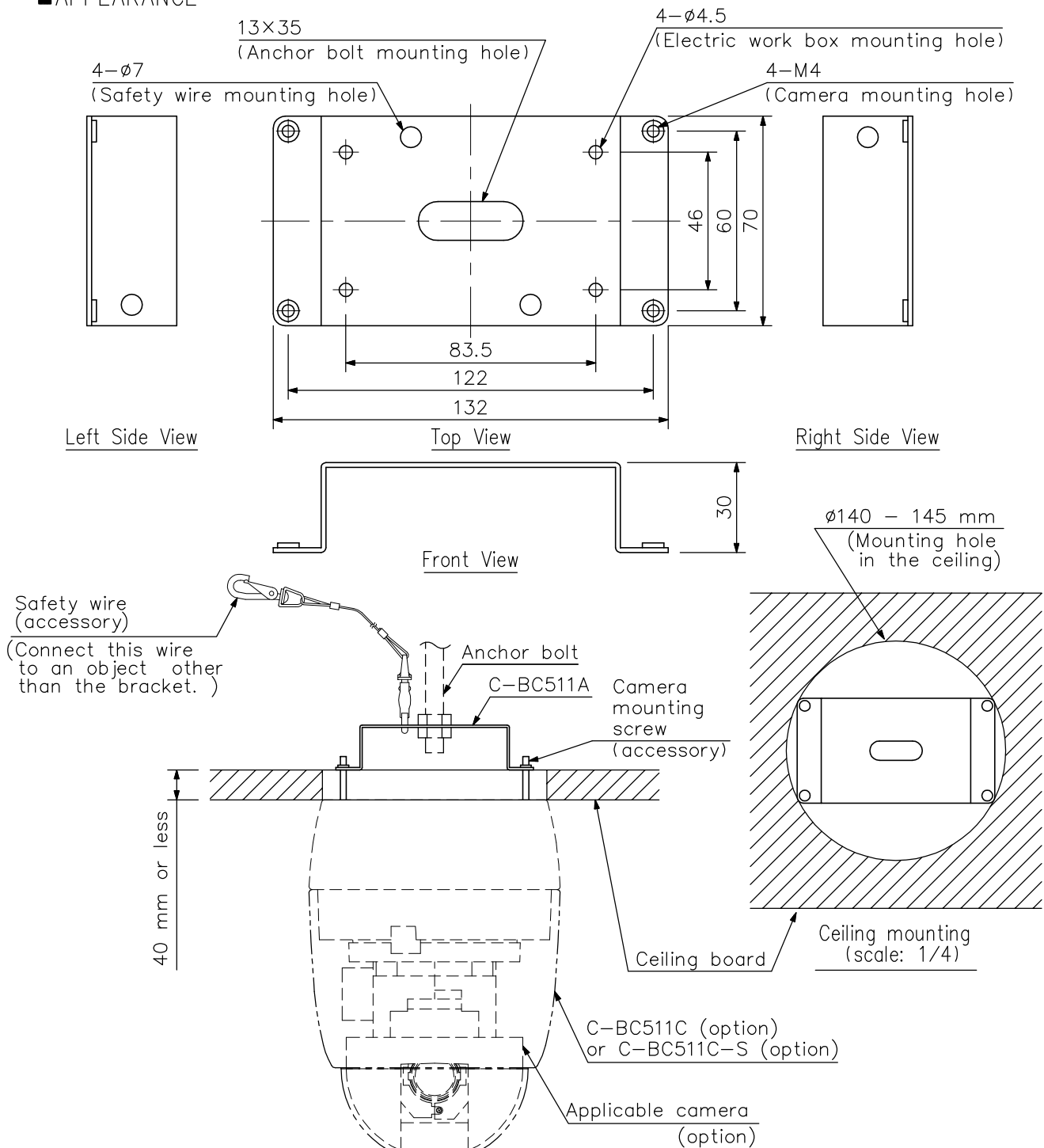
DESCRIPTION

The C-BC511A Ceiling Mounting Bracket is specially designed to mount TOA's Combination Cameras directly on the wall. The bracket facilitates mounting of the camera on the plasterboard in the double ceiling or other locations where the mounting screws cannot be installed securely.

SPECIFICATIONS

Finish	Surface-treated steel plate, black, paint
Dimensions	132 (W) X 30 (H) X 70 (D) mm
Weight	160 g
Accessory	Camera mounting screw ...4, Safety wire ...1, Pattern paper ...1

APPEARANCE



UNIT:mm SCALE:1/2

Ceiling mounting (scale: 1/4)