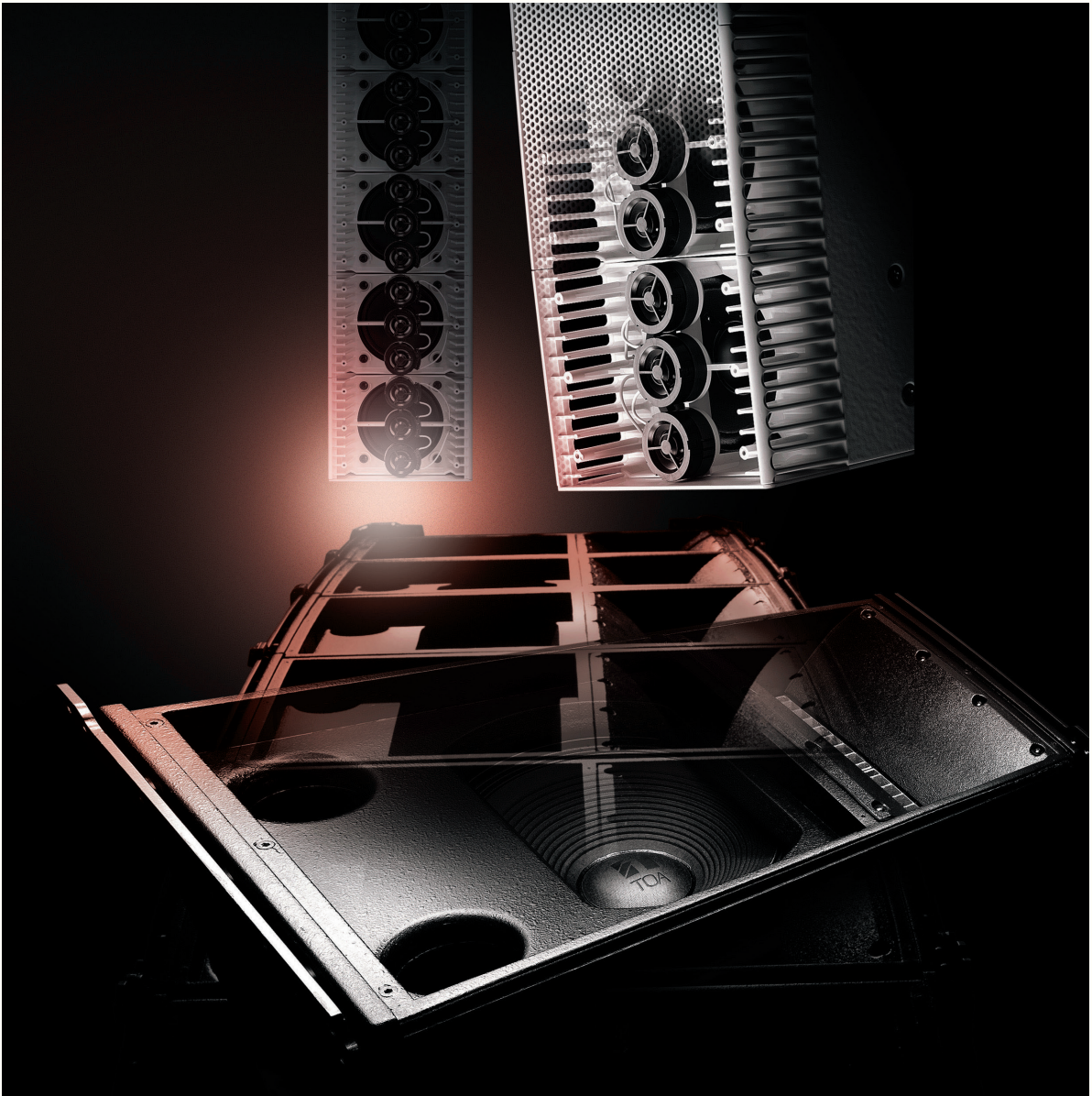


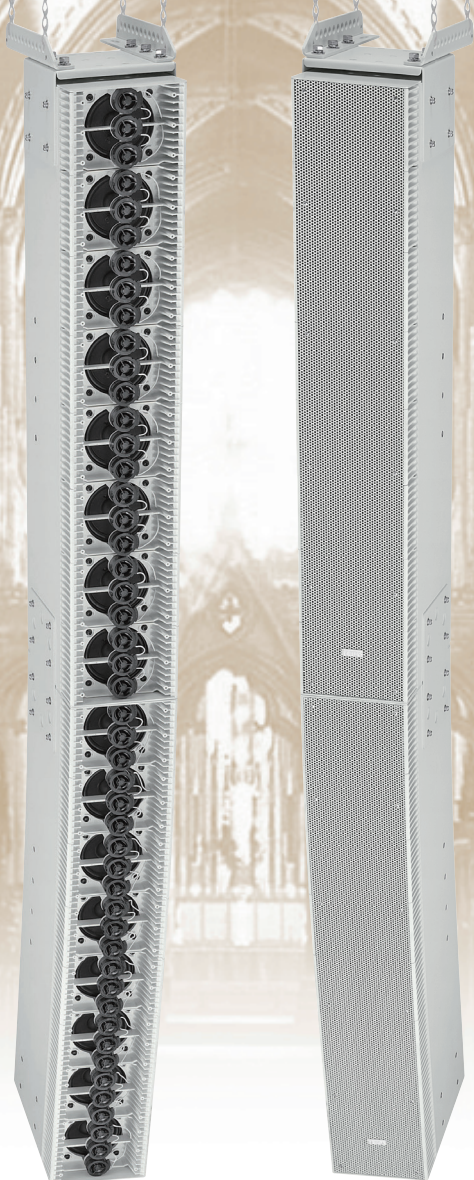


LINE ARRAY SPEAKER SYSTEMS



High quality sound reinforcement equipment for demanding environments.

Versatile operational and installation features



Type S Series Main Features

Driver complement

Both speaker types are 2-way line array speakers, each containing 32 speaker elements—8 x 10cm woofers and 24 high frequency drivers. Driver units are installed vertically and with minimal space between units in order to create a continuous linear sound source. This enables delivering a uniform sound pressure that resists attenuation with distance.

Sound dispersion characteristics

The SR-S4L speaker features a linear design tailored for distance sound transmission applications and the SR-S4S features a gently curved line designed for a 10 vertical coverage area which offers ideal sound coverage over a shorter distance.

Directed sound dispersion

Type S Series speakers limit vertical sound dispersion in order to focus directivity at the targeted listening area.

Multi-speaker array-configurable

Both systems can be combined to realize a versatile speaker array that performs equally well in terms of sound coverage and dispersion over short and long distances. Less difference in sound level is perceived whether close to or somewhat distant from the speakers, providing a uniform response. Individual speaker systems of each type can be assembled together as multiple configurations, acting as longer sound sources that can deliver greater output as well as project the sound a greater distance.

Reflection-free

The speakers' construction and characteristics make them resist floor- and ceiling-originating reflections, enhancing clarity even in reverberant spaces and other problem environments.

Feedback-resistant

The design of the speakers also makes them highly resistant to annoying feedback because volume levels are not extraordinarily high even close to the speakers and makes setting gain levels easier.

Biamp or single amp drive

Factory-set for single amplifier driving, the Type S series speakers can simply be set for biamping by making a simple internal wiring change. For optimal biamping, a digital signal processor can be employed to set crossover frequency points.

High impedance-compatible

The speaker can also be conveniently set for high-impedance applications by using the optional MT-S0601 matching transformer. This option is only possible when driving the speaker with a single amplifier.



SR-S4L/SR-S4LWP



SR-S4S/SR-S4SWP

enhance sound reinforcement applications.

Type A Series Main Features

Wide frequency range

Offering greater output levels with wider frequency response, the SR-A12 modular speaker units are compact but powerful 2-way configurations.

Drive complement

Each speaker features a 12" woofer and a high-frequency horn that is connected to 2 high-performance compression drivers. TOA's horn features a proprietary phase wave front control throat that realizes the best performance from the compression drivers. Each speaker is loaded with two high-performance compression drivers to achieve greater output.

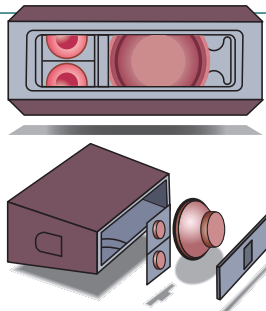
Sound coverage options

Type A Series includes one speaker configuration with a 5-degree taper specifically designed to transmit sound over distance as well as a 15-degree taper configuration which provides greater short range coverage. Both configurations may be combined as required to achieve uniform sound coverage in various environments.

Easy maintenance and servicing

Keeping operational requirements in mind, TOA has made it possible to quickly replace the low frequency driver as well as the high frequency driver from the rear of the enclosure.

In a permanent installation, ease of service and maintenance are important points to consider.



Ideal for permanent installations

Type A Series are capable of high-quality sound with ideal coverage and dispersion characteristics in environments that used to pose severe difficulties for permanent installations, especially when high fidelity sound is desired.



SR-A12L/SR-A12LWP



SR-A12S/SR-A12SWP

SPECIFICATIONS

		SR-S4L	SR-S4LWP	SR-S4S	SR-S4SWP
Enclosure		Bass-reflex type	Sealed type	Bass-reflex type	Sealed type
Power Handling Capacity		Continuous program: 600W			
Rated Impedance		8			
Sensitivity		94dB (1W, 1m)		93dB (1W, 1m)	
Frequency Response		70 – 20,000Hz (when using the optional DP-SP3)			
Crossover Frequency		3,500Hz			
Directivity Angle		Horizontal: 90 Vertical: 0 (within the range of speaker height)		Horizontal: 90 Vertical: 10	
Speaker Component		Low frequency: 10cm cone-type x 8 High frequency: 2.5cm balanced dome-type x 24			
Input Connector		M4 screw terminal, distance between barriers: 10.0mm (0.39") and Neutrik NL4MP x 2	—	M4 screw terminal, distance between barriers: 10.0mm (0.39") and Neutrik NL4MP x 2	—
Connected Cable		—	Direct cable withdrawal from internal speaker: ø8.6mm, conductor cross section: 1.25mm ² , 4-core cable, 3m	—	Direct cable withdrawal from internal speaker: ø8.6mm, conductor cross section: 1.25mm ² , 4-core cable, 3m
Water Protection		—	IPX4	—	IPX4
Finish	Enclosure:	MDF, white, paint	Plywood, white, urethane coating	MDF, white, paint	Plywood, white, urethane coating
	Front grill:	Punched steel plate, white, acrylic paint	Punched stainless steel (SUS304), white, paint	Punched steel plate, white, acrylic paint	Punched stainless steel (SUS304), white, paint
Dimensions		160 (W) x 895 (H) x 255 (D)mm		160 (W) x 892 (H) x 303 (D)mm	
Weight		16kg			
Accessory		Bi-amplifier drive rating label x 1, Bi-amplifier drive input indication label x 1			
Option		Matching transformer: MT-S0601, Extension plate: SR-EP4, Flying bracket: SR-FB4, Wall mounting bracket: SR-WB4, Wall tilt bracket: SR-TB4, Stand adapter: SR-SA4, Protection pad: SR-PP4, Floor stand: SR-FS4,	Matching transformer: MT-S0601, Extension plate: SR-EP4WP, Wall tilt bracket: SR-TB4WP, Wall mounting bracket: SR-WB4WP, Protection pad: SR-PP4,	Matching transformer: MT-S0601, Extension plate: SR-EP4, Flying bracket: SR-FB4, Wall tilt bracket: SR-TB4, Stand adapter: SR-SA4, Protection pad: SR-PP4,	Matching transformer: MT-S0601, Extension plate: SR-EP4WP, Wall tilt bracket: SR-TB4WP, Protection pad: SR-PP4,

		SR-A12L	SR-A12LWP	SR-A12S	SR-A12SWP
Enclosure		Bass-reflex type			
Power Handling Capacity		Continuous program: Low frequency; 450W, High frequency; 180W			
Rated Impedance		Low frequency; 8, High frequency; 16			
Sensitivity		Low frequency; 98dB (1W, 1m), High frequency; 110dB (1W, 1m)		Low frequency; 98dB (1W, 1m), High frequency; 109dB (1W, 1m)	
Frequency Response		50 – 20,000Hz (when using the optional DP-SP3)			
Crossover Frequency		1,000Hz (when using the optional DP-SP3)			
Directivity Angle		Horizontal: 90 Vertical: 5		Horizontal: 90 Vertical: 15	
Speaker Component		Low frequency: 30cm cone-type High frequency: Wave front control horn 90 (horizontal) x 5 (vertical) + compression driver x 2		Low frequency: 30cm cone-type High frequency: Wave front control horn 90 (horizontal) x 15 (vertical) + compression driver x 2	
Input Connector		M4 screw terminal, distance between barriers: 10.0mm (0.39") and Neutrik NL4MP x 2	—	M4 screw terminal, distance between barriers: 10.0mm (0.39") and Neutrik NL4MP x 2	—
Connected Cable		—	Direct cable withdrawal from internal speaker: ø8.6mm, conductor cross section: 1.25mm ² , 4-core cable, 3m	—	Direct cable withdrawal from internal speaker: ø8.6mm, conductor cross section: 1.25mm ² , 4-core cable, 3m
Water Protection		—	IPX4	—	IPX4
Finish	Enclosure:	Plywood, black, paint	Plywood, black, urethane coating	Plywood, black, paint	Plywood, black, urethane coating
	Front grill:	Punched steel plate, black, acrylic paint	Punched stainless steel (SUS304), black, paint	Punched steel plate, black, acrylic paint	Punched stainless steel (SUS304), black, paint
Dimensions		740 (W) x 433 (H) x 469 (D)mm		740 (W) x 433 (H) x 467 (D)mm	
Weight		49kg (including accessories)	51kg (including accessories)	47kg (including accessories)	48kg (including accessories)
Accessory		Joint plate x 2, Joint plate mounting bolt (M10) x 16			
Option		Rigging frame: SR-RF12	Rigging frame: SR-RF12WP	Rigging frame: SR-RF12	Rigging frame: SR-RF12WP

Sub-Woofer

SR-A18B

Enclosure

Power Handling Capacity

Rated Impedance

Sensitivity

Frequency Response

Crossover Frequency

Speaker Component

Input Connector

Finish

Enclosure:

Front grill:

Dimensions

Weight

Accessory

Bass-reflex type

Continuous program: 720W

8

95dB (1W, 1m)

40 – 400Hz (when using the optional DP-SP3)

80Hz (when using the optional DP-SP3)

46cm cone-type

M4 screw terminal, distance between barriers: 10.0mm (0.39") and Neutrik NL4MP x 2



Plywood black, paint

Punched steel plate, black, acrylic paint

740 (W) x 573 (H) x 698 (D)mm

66kg (including accessories)

Joint plate x 2, Joint plate mounting bolt (M10) x 16



hance sound reinforcement applications.

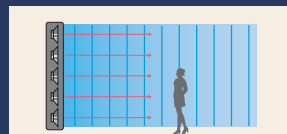
Among TOA's wide range of sound reinforcement products, Line Array Speaker Systems play an important role in providing high quality audio for medium sized venues that can range from houses of worship, gymnasiums, to various sports facilities and other problematic environments.

TOA Line Array Speaker Systems are designed to perform optimally with ideal sound dispersion characteristics in spaces that pose difficulties for more conventional speaker systems. Available in different configurations and with a wide range of mounting possibilities to suit particular requirements precisely, these slim tower-configured speakers and modular speaker systems offer perfect solutions for difficult sound reinforcement problems that require effective coverage.

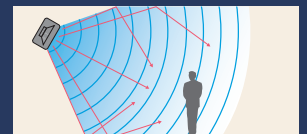
TOA Line Array Speaker Systems are designed for permanent installations and are available in slim, tower-configured types, the SR-S4L and SR-S4S (Type S).

For installations where greater sound output with a wider frequency response are required, the modular SR-A12L, the SR-A12S and a companion SR-A18B (Type A) low frequency module can be utilized. A wide range of mounting brackets enables flexible speaker mounting options for the best sound coverage characteristics.

Line Array Speaker



Standard Speaker



Optional Accessories



SR-RF12
Rigging Frame
for indoor use



SR-RF12WP
Rigging Frame
for outdoor use



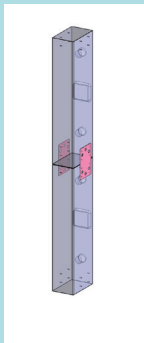
SR-TP12
Tilt Joint Plate



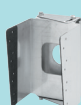
SR-EP4
Extension Plate
for indoor use



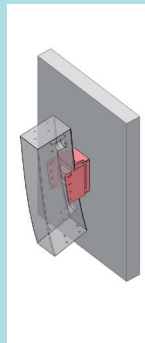
SR-EP4WP
Extension Plate
for outdoor use



SR-TB4
Wall Tilt Bracket
for indoor use



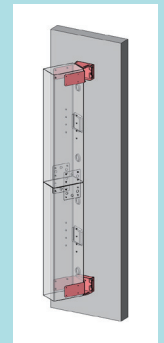
SR-TB4WP
Wall Tilt Bracket
for outdoor use



SR-WB4
Wall Mounting Bracket
for indoor use



SR-WB4WP
Wall Mounting Bracket
for outdoor use

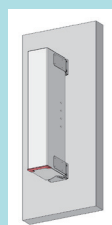


SR-SA4
Stand Adapter



SR-FB4
Flying Bracket

SR-PP4
Protection Pad



SR-FS4
Floor Stand