

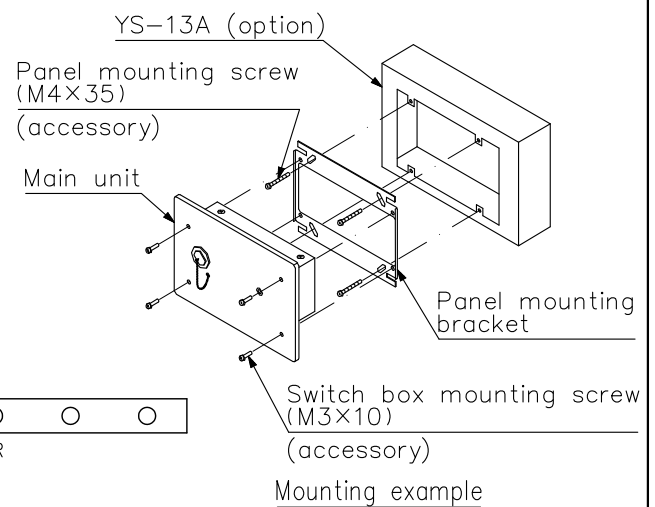
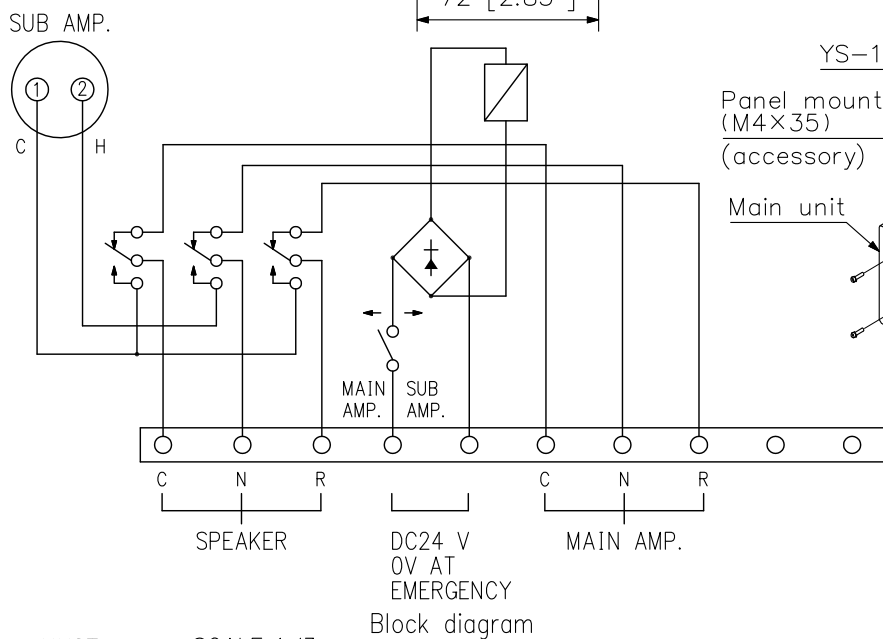
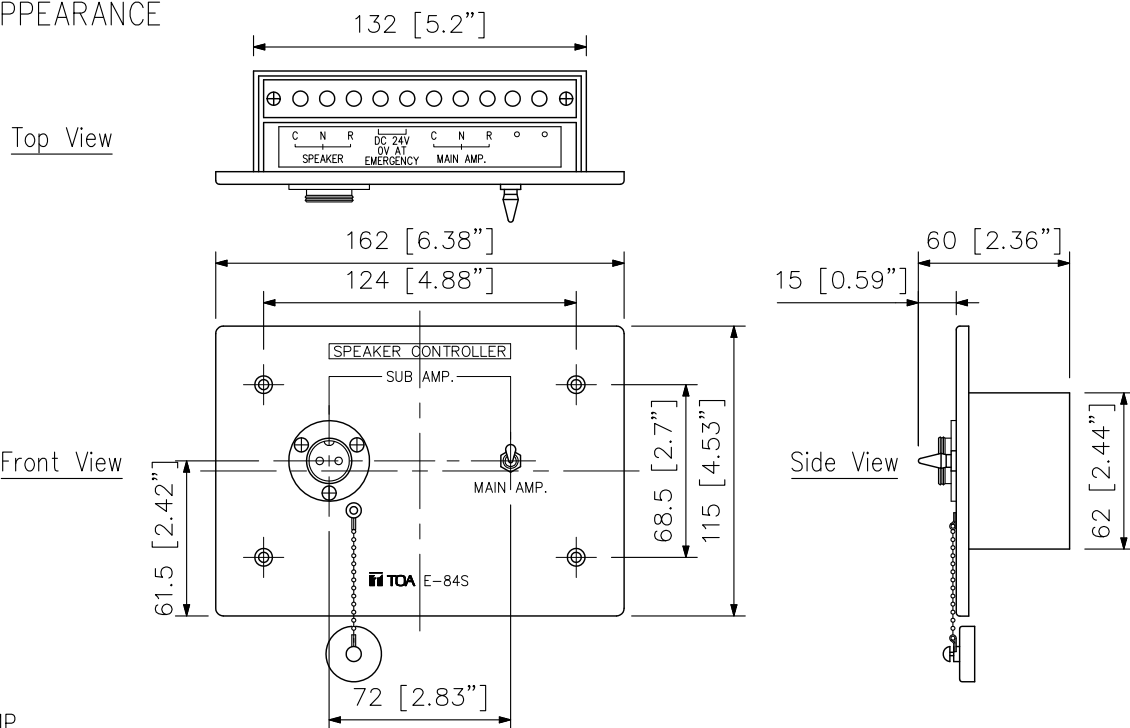
DESCRIPTION

The E-84S Speaker Controller features a front panel-mounted toggle switch that switches the output signal between the main and sub amplifiers. The output automatically switches to the main amplifier when the E-84S receives an emergency-cutoff signal from the main amplifier.

SPECIFICATIONS

Power Source	24 V DC (supplied by the emergency amplifier)
Control System	Amplifier output (up to 120 W) controlled by the front panel switch and control power supply (emergency-cutoff)
Control Power Supply	24 V DC, 27 mA
Connector	BTS 16R2A
Connection Cable	Control wire: 2, Speaker wire: 3
Terminal	M4 screw terminal, distance between barriers: 9 mm (0.35")
Finish	Panel: Alumite
Dimensions	162 (W) × 115 (H) × 60 (D) mm (6.38" × 4.53" × 2.36")
Weight	400 g (0.88 lb)
Accessory	Circular connector (plug) (ø16 – 2 pins) ...1, Switch box mounting screw ...4, Panel mounting screw ...4
Applicable Box	Wall-mount box: YS-13A (option)

APPEARANCE



UNIT:mm SCALE:1/3

Block diagram

Mounting example