



CAMERA MOUNTING BRACKETS

INSTRUCTION MANUAL



C-BC11, C-BC21 C-BC31, C-BC41

SAFETY PRECAUTIONS

- Be sure to read the instructions in this section carefully before use.
- Make sure to observe the instructions in this manual as the conventions of safety symbols and messages regarded as very important precautions are included.
- We also recommend you keep this instruction manual handy for future reference.

Safety Symbol and Message Conventions

Safety symbols and messages described below are used in this manual to prevent bodily injury and property damage which could result from mishandling. Before operating your product, read this manual first so you are thoroughly aware of the potential safety hazards as well as understand the safety symbols and messages.

	WARNING	Indicates a potentially hazardous situation which, if mishandled, could result in death or serious personal injury.
	CAUTION	Indicates a potentially hazardous situation which, if mishandled, could result in moderate or minor personal injury, and/or property damage.

WARNING

- Be sure to leave the installation of the unit to your nearest TOA dealer or installer because the installation requires expert knowledge. Inappropriate installation may cause fire, electric shock, personal injury and/or property damage.
- Do not expose the unit to rain or an environment where it may be injured by sea-breezes or corrosion gas. Deterioration of the fittings may result in the unit falling down and causing personal injury.
- Do not mount equipment more than maximum load limitation of the unit. Doing so may result in the unit falling down and causing personal injury.
- Tighten the fixing screws or components of the unit securely. Doing otherwise may result in the unit falling down and causing personal injury.
- Install the unit only in a location that can structually support the total weight of the camera and this unit. Doing otherwise may result in the unit falling down and causing personal injury and/or property damage.
- Leave all periodical servicing to your nearest TOA dealer or installer.
Corrosive unit or screws may result in the unit falling down and causing personal injury and/or property damage.

CAUTION

- Never rub the edge of the metal by your hands. Rubbing it strongly may cause personal injury.
- Do not fall down from the unit, nor use it as a foot stand. Doing so may cause personal injury.

GENERAL DESCRIPTION

The TOA Camera mounting brackets, suitable for indoor use, enable easy adjustment and fixture of the camera angle. They allow the connection cables to run through the prop pipe for an aesthetic appearance.

HANDLING PRECAUTIONS

To clean the unit, wipe with a soft cloth lightly soaked in a neutral detergent and wrung dry. Never use volatile solvents such as thinner or benzine, as these may damage the unit's finish or cause the paint or indication to peel, or change in color.

MOUNTING

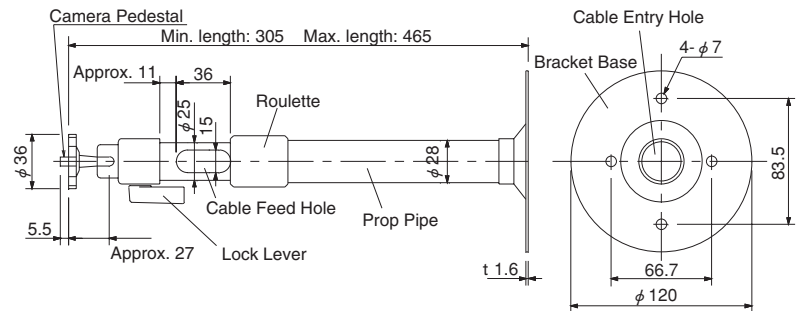
1. Determine the hole positions to fix the bracket base.
2. Make four holes on a wall or ceiling. (When using wood screws, make four markings on a wall or ceiling.)
3. When running the connection cables through the prop pipe, insert them into the cable entry hole at the bottom of the bracket base, and then pull out them from the cable feed hole of the prop pipe.
4. Fix the bracket base with four commercial fixing screws.
5. Loosen the roulette and adjust the lengh of the prop pipe. (C-BC11, C-BC41)
6. Mount the camera to the camera pedestal.
7. Loosen the lock lever and determine the angle and direction of the camera. Then, tighten the lock lever again.

SPECIFICATIONS AND DIMENSIONS (unit: mm)

■ C-BC11 Ceiling Mounting Bracket

The C-BC11 Extendable ceiling mounting bracket allows the connection cables to run through the prop pipe for an aesthetic appearance. It's overall length can be extended up to 465 mm (minimum 305 mm).

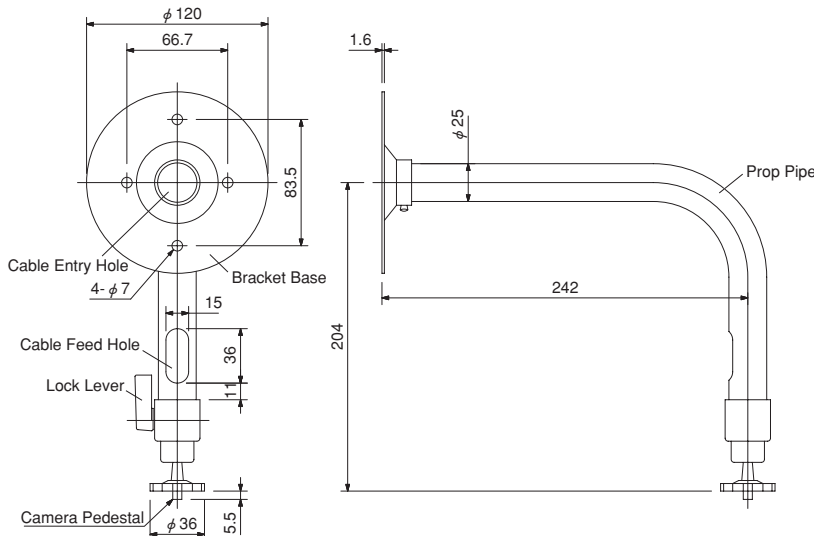
Type	Ceiling mount (Extendable two-section type)
Material	Rolled steel, white alumite pipe
Panning Angle	Vertical : 90°up to 15°down Horizontal: 360°
Maximum Load	4 kg
Weight	360 g
Finish	Metallic silver
Accessory	⊕ Truss head screw (M4x35)... 4



■ C-BC21 Wall or Ceiling Mounting Bracket

The C-BC21 Wall or ceiling mounting bracket is a L-shaped bracket, allowing the connection cables to run through the prop pipe for an aesthetic appearance.

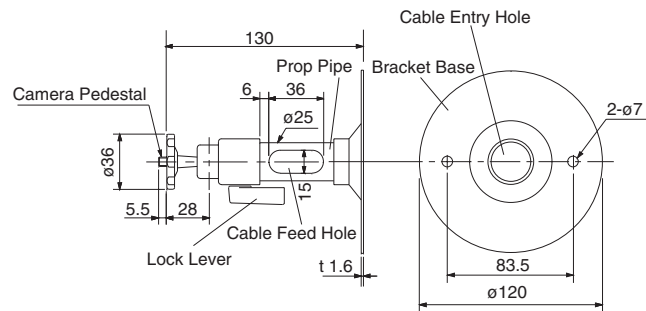
Type	Wall or ceiling mount ("L" type)
Material	Rolled steel, white alumite pipe
Panning Angle	Vertical : 90°up to 15°down Horizontal: 360°
Maximum Load	4 kg
Weight	340 g
Finish	Metallic silver
Accessory	⊕ Truss head screw (M4x35)... 4



■ C-BC31 Wall or Ceiling Mounting Bracket

The C-BC31 Wall or ceiling mounting bracket allows the camera to be installed adjacent to a wall or ceiling, and the connection cables to run through the prop pipe for an aesthetic appearance.

Type	Wall or ceiling mount (No extendable type)
Material	Rolled steel, white alumite pipe
Panning Angle	Vertical : 90°up to 15°down Horizontal: 360°
Maximum Load	4 kg
Weight	240 g
Finish	Metallic silver
Accessory	⊕ Truss head screw (M4x35)... 2



■ C-BC41 Ceiling Mounting Bracket

The C-BC41 Extendable ceiling mounting bracket allows the camera to be suspended from the ceiling of high beam, and the connection cables to run through the prop pipe for an aesthetic appearance. It's overall length can be extended up to 1004 mm (minimum 617 mm).

Type	Ceiling mount (Extendable two-section type)
Material	Rolled steel, white alumite pipe
Panning Angle	Vertical : 90°up to 15°down Horizontal: 360°
Maximum Load	4 kg
Weight	520 g
Finish	Metallic silver
Accessory	⊕ Truss head screw (M4x35)... 4

