

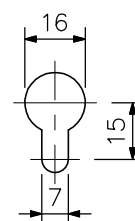
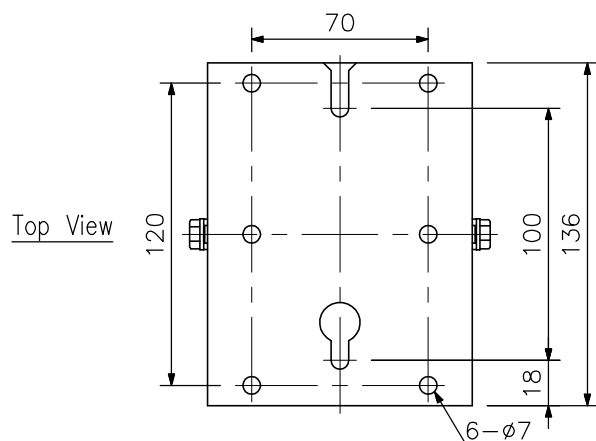
### DESCRIPTION

The C-BC200H Housing Fixing Stand is designed to be used in conjunction with the wall mounting bracket to mount camera housings on a wall to fix cameras in the predetermined direction. The C-BC200H is constructed of stainless steel and is designed to withstand prolonged use in severe outdoor environments without corrosion or marring of the unit's appearance.

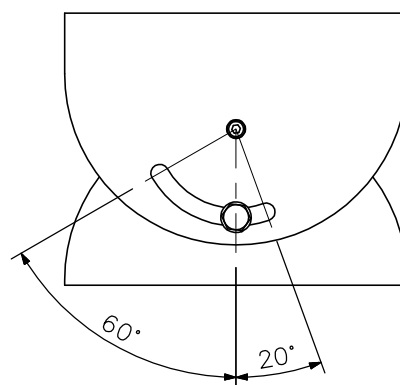
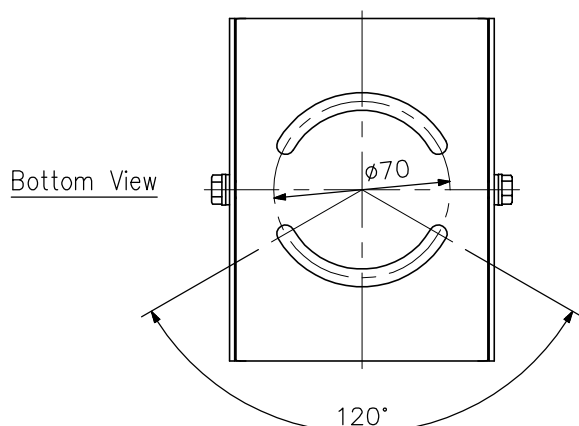
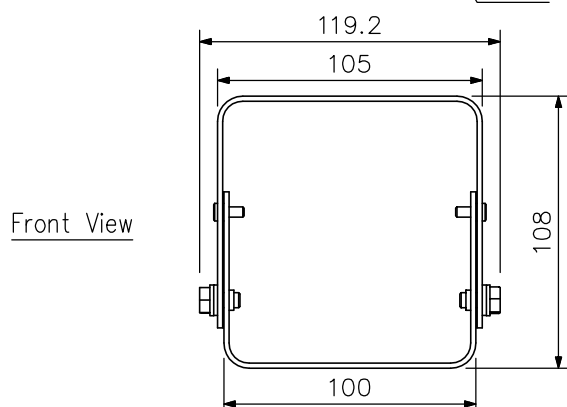
### SPECIFICATIONS

Angler Adjustment	Vertical: $-60^{\circ}$ to $+20^{\circ}$ Horizontal: $\pm 60^{\circ}$ ( $120^{\circ}$ ) when using 2 mounting holes (Can be set freely for up to $360^{\circ}$ when C-BC200K is mounted)
Applications	Outdoor (except seaside and industrial districts where the unit is subject to corrosion, and heights that expose the unit to strong wind pressure)
Finish	Stainless steel, off-white, paint
Dimensions	119.2 (W) $\times$ 108 (H) $\times$ 136 (D) mm
Weight	900 g
Accessory	Wall mounting bracket mounting bolt (with washer, SUS) $\times$ 2
Applicable Model	Camera housing: C-CH200 series, C-CH100 series
Option	Wall mounting bracket: C-BC200K

### APPEARANCE



Dimension for mounting hole  
(SCALE: 1/2)



UNIT:mm SCALE: 1/3