

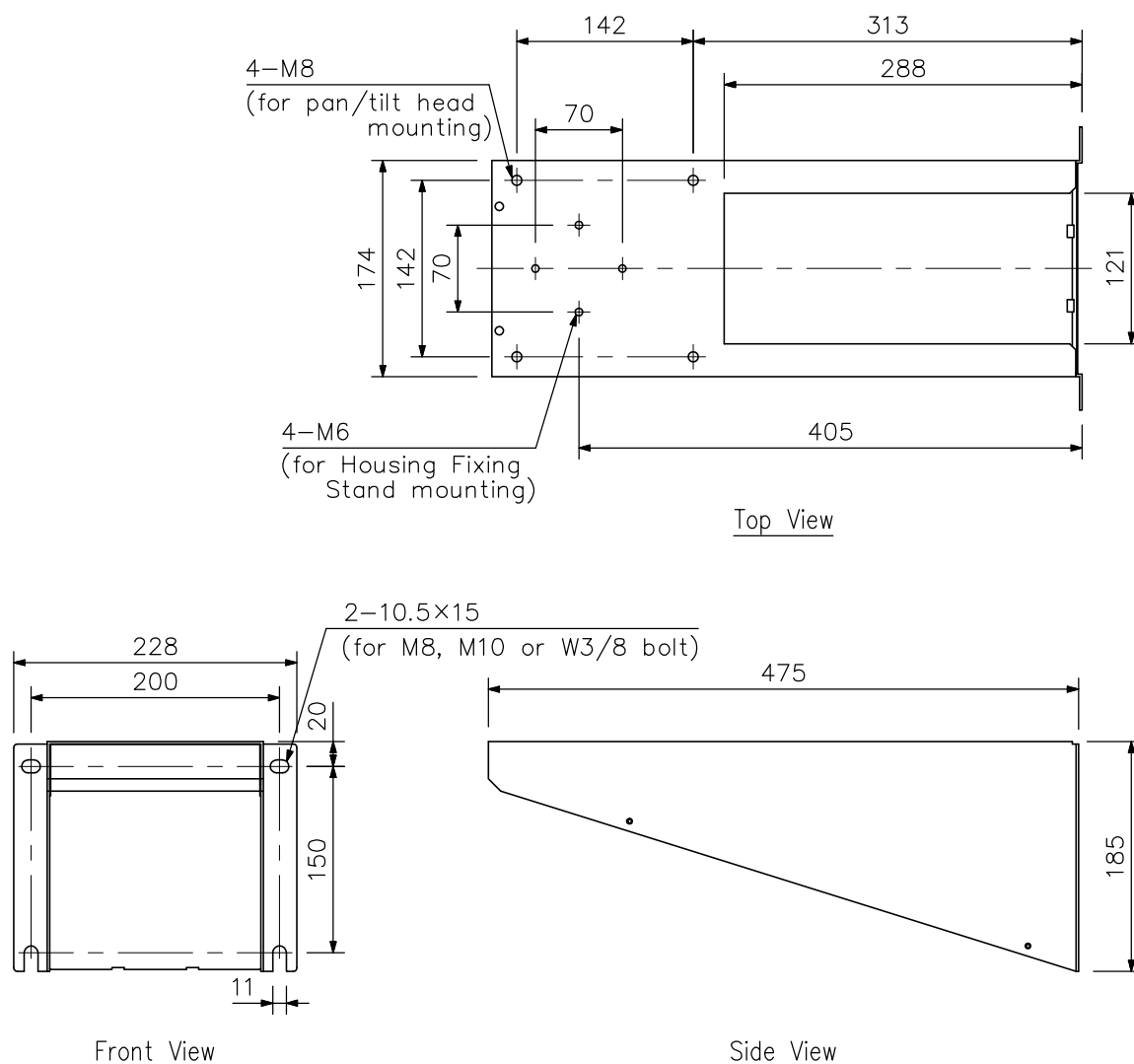
DESCRIPTION

The C-BC200K Mounting Bracket is designed specifically for use in the wall-mounting of camera systems comprising the camera housing in combination with either the Pan/Tilt Head or the Housing Fixing Stand. The C-BC200K is constructed of stainless steel and is designed to withstand prolonged use in severe outdoor environments without corrosion or marring of the unit's appearance.

SPECIFICATIONS

Permissible Load	Under 20 kg
Wind Load	Maximum wind velocity 60 m/s (When C-CH200 or C-CH100 Series and C-PH200 are used)
Application	Outdoor (except seaside and industrial districts where the unit is subject to corrosion, and heights that expose the unit to strong wind pressure)
Finish	Stainless steel, off-white, paint
Weight	2.8 kg
Accessory	Pan/tilt head mounting bolt (SUS) ×2, Pan/tilt head mounting washer (SUS) ×1set
Option	Pan/tilt head: C-PH200, CC-5521 Housing fixing stand: C-BC200H

APPEARANCE



UNIT:mm SCALE: 1/6