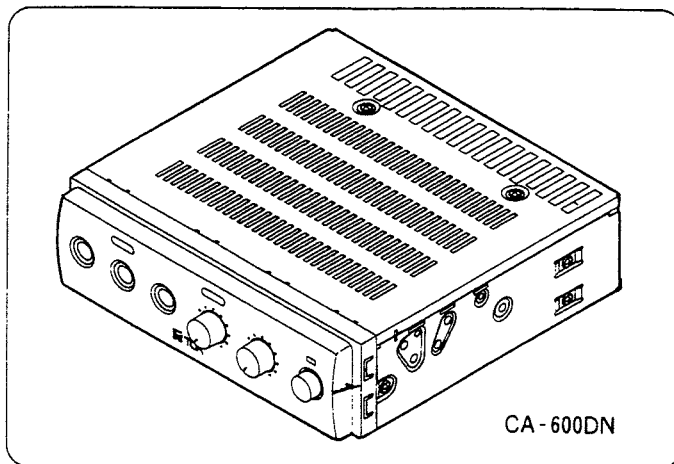
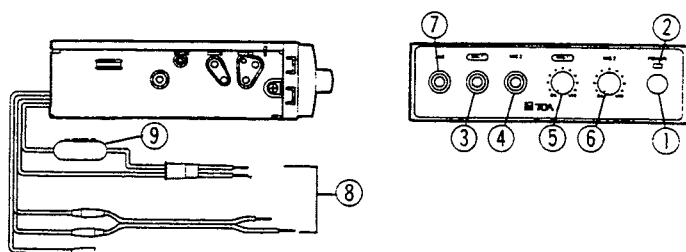


CAR AMPLIFIERS CA-400DN CA-600DN



Please follow the instructions in this manual to obtain the optimum results from the car amplifiers.
We also recommend that you keep this manual handy for future reference.

■ Name and Function of Each Part

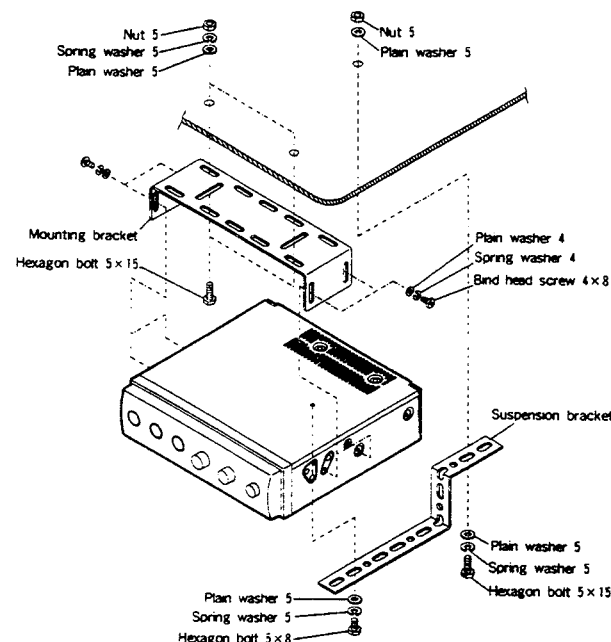


- ① **Power Switch(POWER)**
Depress the power switch, and the amplifier is powered up, then brought in operation after several-second standby.
To power off the amplifier, depress the switch again.
- ② **Power Lamp**
The light comes on when the power supply is switched on.
- ③ **Microphone 1 Input Jack (MIC 1)**
- ④ **Microphone 2 Input Jack (MIC 2)**
Plug in the supplied microphone or other low impedance microphone.
- ⑤ **Microphone 1 Volume Control Knob**
- ⑥ **Microphone 2 Volume Control Knob**
Adjust these knobs to control the volume of microphones plugged in "MIC 1" or "MIC 2" respectively.
- ⑦ **Auxiliary Input Jack (AUX)**
Connect a tape recorder or a radio to this jack.
- ⑧ **Power and Loudspeaker Cords**
Cords for connecting power supply and the loudspeaker.
- ⑨ **Fuse holder**
Be sure to use a fuse of the specified type and rating. Use of other fuse than specified may cause equipment breakdown.

■ Mounting Method

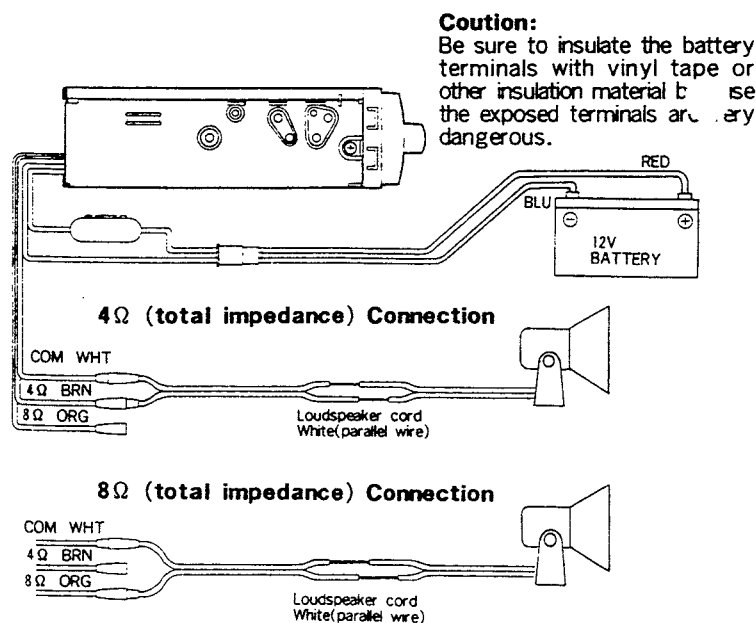
The amplifiers are fully compliant with DIN Standard in size, thereby fitting into a dashboard or car console though their mounting methods differ with cars.
They also can be installed under a dashboard using the supplied mounting hardware.

When using the supplied mounting bracket and suspension bracket, be sure to use the screws specified in the figure below. Use of other screws may cause damage to the amplifier.



■ Connection

Connect the power supply and the loudspeaker according to the following diagram.

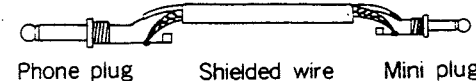


- Not usable for cars using 24V battery.
- Not usable for cars using positive grounding.
- Do not mistake the positive and the negative of the power supply cord in connection. If the blue power supply cord ⊖ is connected to ⊕ by mistake, the amplifier may be damaged.
- The output power of car amplifier must not exceed the allowable total input of connected speakers.

■ Operation

1. Depress the power switch ①, then power is supplied and the power lamp ② lights up.
2. Plug the microphone in the microphone input jack ③.
3. Set the microphone's talk switch to ON, then adjust the microphone 1 volume control ⑤ to an adequate volume.
4. To use other microphone, plug the microphone in the microphone 2 input jack ④ and adjust the volume by the microphone 2 volume control knob ⑥.
Up to two microphones can be used at a time.
5. To amplify the output of a tape recorder or a radio, connect the earphone terminal or the line out terminal of the tape recorder or the radio to the auxiliary input jack ⑦.

To connect the tape recorder or the radio to the amplifier, use a phone plug - to - mini plug cord obtainable at a store or the cord illustrated below.



Solder the shield wire to the terminals of the phone plug and the mini plug so as not to contact other terminals.
Consult our distributor for detail.

■ Specifications

	CA-400DN	CA-600DN
Power requirement	Standard voltage: 13.2 V Allowable range : 10 - 16 V (using 12 V battery)	
Power consumption	5.5 A or less at rated output	9.0 A or less at rated output
Power output	40 W rated	60 W rated
Distortion	Less than 5% (at 1kHz rated output)	
Frequency response	100 - 10 kHz ± 3 dB	
Inputs	MIC 1 : 600 Ω, 4 mV MIC 2 : 600 Ω, 4 mV AUX : 10 k Ω, 500 mV	
Dimensions	178 (W) × 50 (H) × 181.5 (D) mm	
Weight	1.4 kg (without accessories)	1.8 kg (without accessories)
Accessory microphone	Unidirectional dynamic type with talk switch Impedance: 600 Ω Sensitivity : -73 dB ± 3 dB	

■ Standard Accessories

- Dynamic microphone 1
- Microphone holder 1
 - Fixing screw (4×16) 2
- Mounting bracket 1
- Suspension bracket 1
- Mounting screws
 - Hexagon bolt (5×15) 3
 - Hexagon bolt (5×8) 1
 - Bind head screw (4×8) 4
 - Hexagon nut (M5) 3
 - Spring washer 5 4
 - Spring washer 4 4
 - Plain washer 5 5
 - Plain washer 4 4
- Power supply cord (1.5m) 1
- Loudspeaker cord (0.3m) 1
- Fuse (10A for CA-400DN, 15A for CA-600DN) 1