

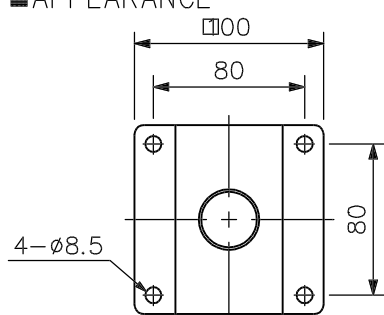
DESCRIPTION

The C-BC100T is a bracket to mount the camera housing C-CH100 and C-CH100FH to a ceiling. Since it is made of stainless steel, it can be used even outdoors.

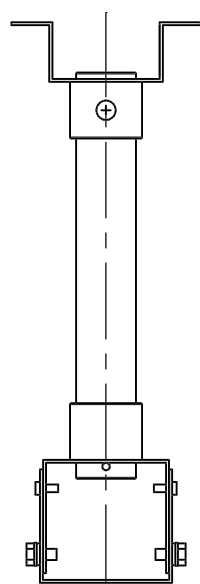
SPECIFICATIONS

Permissible Load	Under 10 kg
Application	Indoor or outdoor wall surface (exclude sea shores and industrial zones where the equipment easily becomes corroded, and the altitudes exposed to the strong wind)
Angle Adjustment	Horizontal: 360° Vertical : ±60°
Finish	Bracket: Stainless steel, off-white, paint Pipe : Stainless steel
Dimensions	100 (W) × 295 (H) × 100 (D) mm
Weight	830 g
Usable Housing	C-CH100 and C-CH100FH

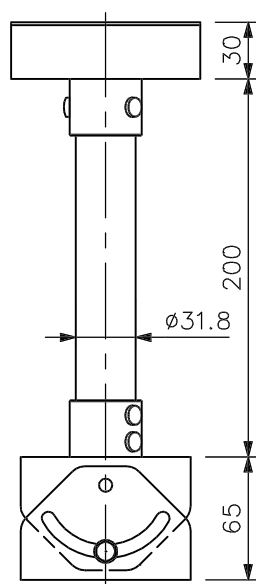
APPEARANCE



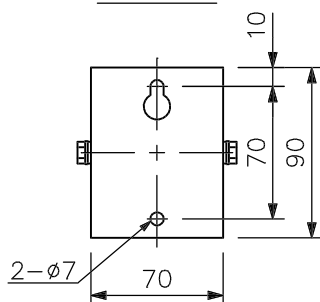
Top View



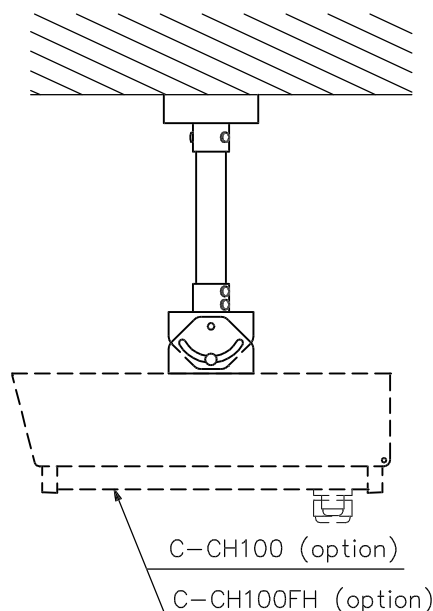
Front View



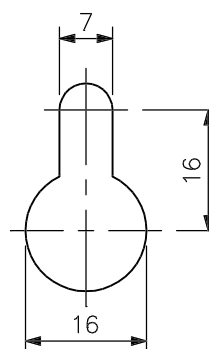
Side View



Bottom View



Sealing suspension example



Fixing Hole (1/1)

UNIT:mm SCALE:1/4