



## INSTRUCTION MANUAL

# HOUSING FIXING STAND

# C-BC200H

Thank you for purchasing TOA's Housing Fixing Stand. Please carefully follow the instructions in this manual in order to ensure long, trouble-free use of your Housing Fixing Stand.

## SAFETY PRECAUTIONS

- Be sure to read the instructions in this manual section carefully before use.
- Make sure to observe the instructions in this section as the conventions of safety symbols and messages regarded as very important are included.
- Please keep this instruction manual handy for future reference.

### Safety Symbol and Message Conventions

Safety symbols and messages described below are used in this manual to prevent bodily injury and property damage which could result from mishandling. Before operating your equipment, read this manual first so you are thoroughly aware of the potential safety hazards as well as understand the safety symbols and messages.



### **WARNING**

Indicates a potentially hazardous situation which could result in death or serious personal injury if ignored or mishandled.

### When Installing the Housing Fixing Stand

- Leave the installation of the unit to your TOA dealer because the installation requires expert knowledge. If an inexperienced installer installs the unit, the unit may fall, possibly causing personal injury.
- Install the unit only in a location that can structurally support the weight of the unit and the mounting bracket. Doing otherwise may result in the unit falling and causing personal injury.
- Avoid installing the unit in vibratory locations. Mounting screws and bolts loosen, which causes the unit to fall off, possibly resulting in personal injury.
- When installing the unit in snowy areas, take appropriate measures so that snow does not pile up on the camera housing and wall mounting bracket. The weight of snow causes the mounted components to fall off, possibly resulting in personal injury.
- Be sure to install the unit with two or more persons. If it is handled by a single person, the unit may fall or topple over, causing personal injury.



## **WARNING**

Indicates a potentially hazardous situation which could result in death or serious personal injury if ignored or mishandled.

### **When Installing the Housing Fixing Stand**

- Install the unit only with the specified method. Failure to follow this instruction may cause extreme force to be applied to the unit and the unit to fall, resulting in personal injury.
- Use nuts and bolts that are appropriate for the ceiling's or wall's structure and composition. Failure to do so may cause the unit to fall, resulting in personal injury.
- Tighten each nut and bolt securely. Ensure that there are no loose joints after installation to prevent accidents that could result in personal injury.
- Use the specified type of camera housing and wall mounting bracket. If the unit is installed in combination with equipment not specified, the unit may fall, possibly resulting in personal injury.
- Avoid installing the unit in locations exposed to sea breeze or corrosive gas. The unit or its mount may be subject to corrosion, which could cause the unit to fall, possibly resulting in personal injury.



## **CAUTION**

Indicates a potentially hazardous situation which could result in moderate or minor personal injury, and/or property damage if ignored or mishandled.

### **When Using the Housing Fixing Stand**

- Do not place heavy objects on the unit as this may cause the unit to topple over or fall down and personal injury could result.
- Do not stand or sit on, nor hang down from the unit as this may cause the unit to topple over or fall down, possibly resulting in personal injury.
- Have the unit periodically checked by the dealer from where it was purchased. Should the unit's mount corrode or structurally deteriorate, the unit could fall down, possibly resulting in personal injury.

## **GENERAL DESCRIPTION**

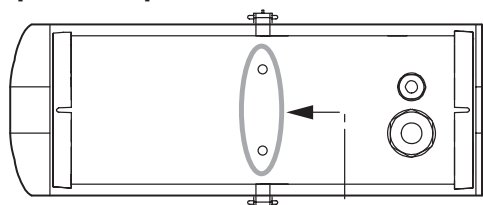
TOA's C-BC200H Housing Fixing Stand is designed to be used in conjunction with the C-CH100 Series or C-CH200 Series camera housings to fix cameras in the predetermined direction. The C-BC200H is constructed of stainless steel plate and is designed to withstand use in severe outdoor environments without corrosion or marring of the unit's appearance.

## INSTALLATION

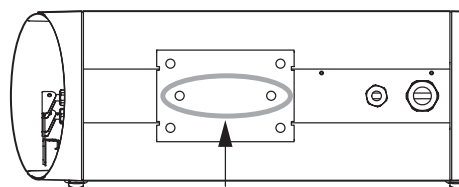
### **WARNING**

Ensure that each bolt is securely tightened after mounting the camera housing and wall mounting bracket to a wall. If there is any loose joint, the unit may fall, possibly resulting in personal injury.

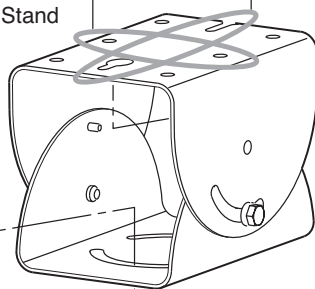
C-CH100 Series Outdoor Camera Housing  
[Bottom view]



C-BC200 Series Outdoor Camera Housing  
[Bottom view]



C-BC200H Housing Fixing Stand

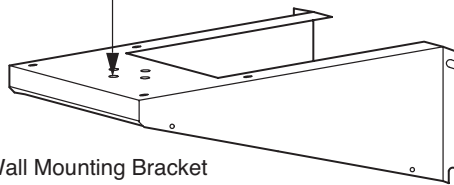


Housing Fixing Stand mounting bolt (accessory)  
(M6 x 12 hexagonal head bolt with washer): 2 pieces

Camera housing mounting bolt\*  
[C-CH200 Series]  
M6 x 12 hexagonal head bolt  
with washer: 2 pieces

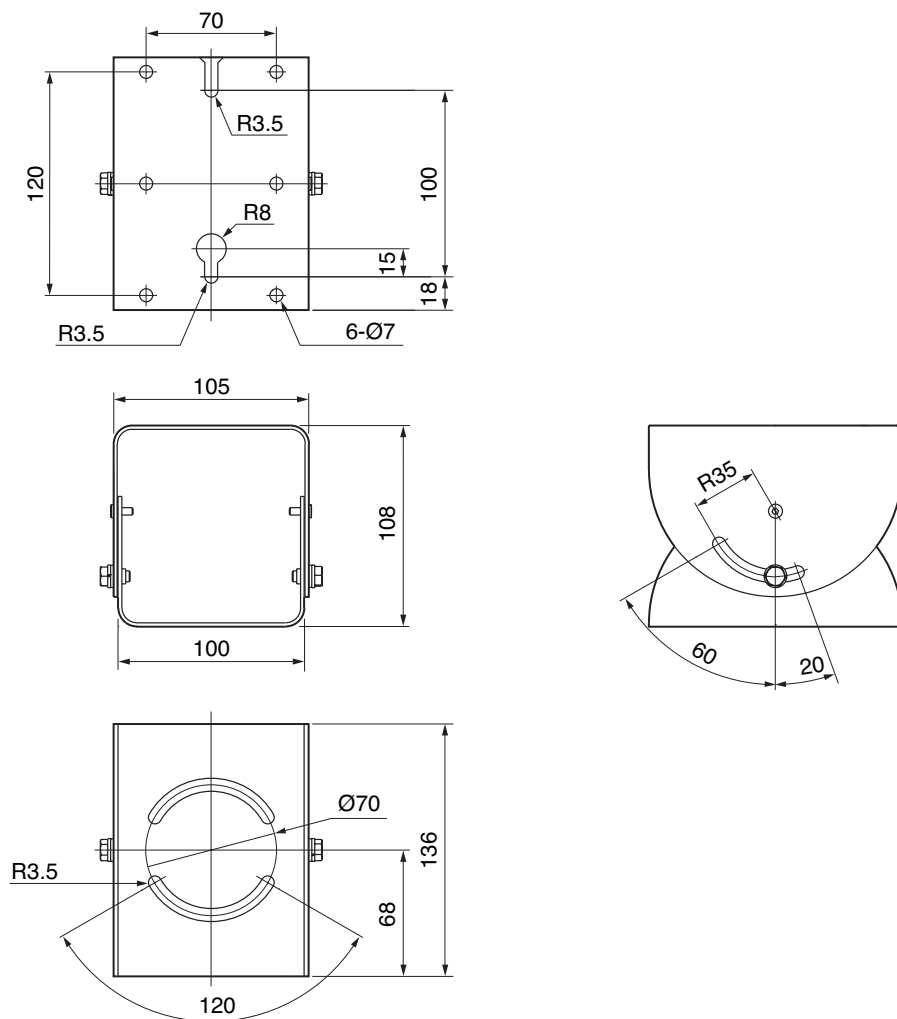
[C-CH100 Series]  
M6 x 12 hexagonal head bolt: 2 pieces  
M6 spring washer: 2 pieces  
M6 plain washer: 2 pieces

C-BC200K Wall Mounting Bracket



\* Supplied with the C-CH100 or C-CH200 Series Outdoor Camera Housings.

## DIMENSIONAL DIAGRAM



Unit: mm

## SPECIFICATIONS

Angler Adjustment	Vertical : $-60^{\circ}$ to $+20^{\circ}$ Horizontal : $\pm 60^{\circ}$ ( $120^{\circ}$ ) when using 2 mounting holes (Can be set freely for up to $360^{\circ}$ when C-BC200K is mounted.)
Applications	Outdoors (except seaside and industrial districts where the unit is subject to corrosion, and heights that expose the unit to strong wind pressure)
Finish	Stainless steel, off white, paint
Dimensions	119.2 (W) x 108 (H) x 136 (D)
Weight	900 g
Applicable Model	Camera Housing : C-CH200 Series, C-CH100 Series
Option	Wall Mounting Bracket : C-BC200K

The unit's specifications and external view are subject to change without notice.

### Accessory

M6 x 12 hexagonal head bolt with washer for mounting the C-BC200H Housing Fixing Stand ..... 2



TOA Corporation

URL: <http://www.toa.jp/>

133-12-873-8A