

CAMERA HOUSINGS/PAN & TILT HEADS MOUNTING BRACKETS

Camera Housings

C-CH100/C-CH100FH



Outdoor use

C-CH210FH



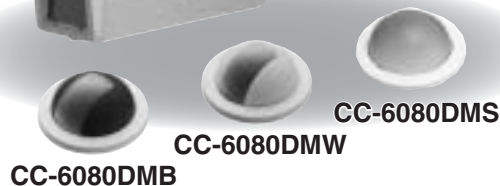
C-CH200/C-CH200FH



CC-6000A



Indoor use



Pan & Tilt Heads

C-PH200



Outdoor use

CC-5525



CC-5521



CC-5550A



Indoor use



C-BL20
Zoom lens
mounting bracket



CC-5050B
Pan head controller

Pan & Tilt Head Mounting Bracket

C-BC200K



CC-4520



CC-4510



Housing & Camera Mounting Bracket

C-BC11



C-BC21



C-BC31



C-BC41



WH-4



C-BC100T



C-BC100K



C-BC200H



Remote Control Unit

CC-5011B



CC-5111B



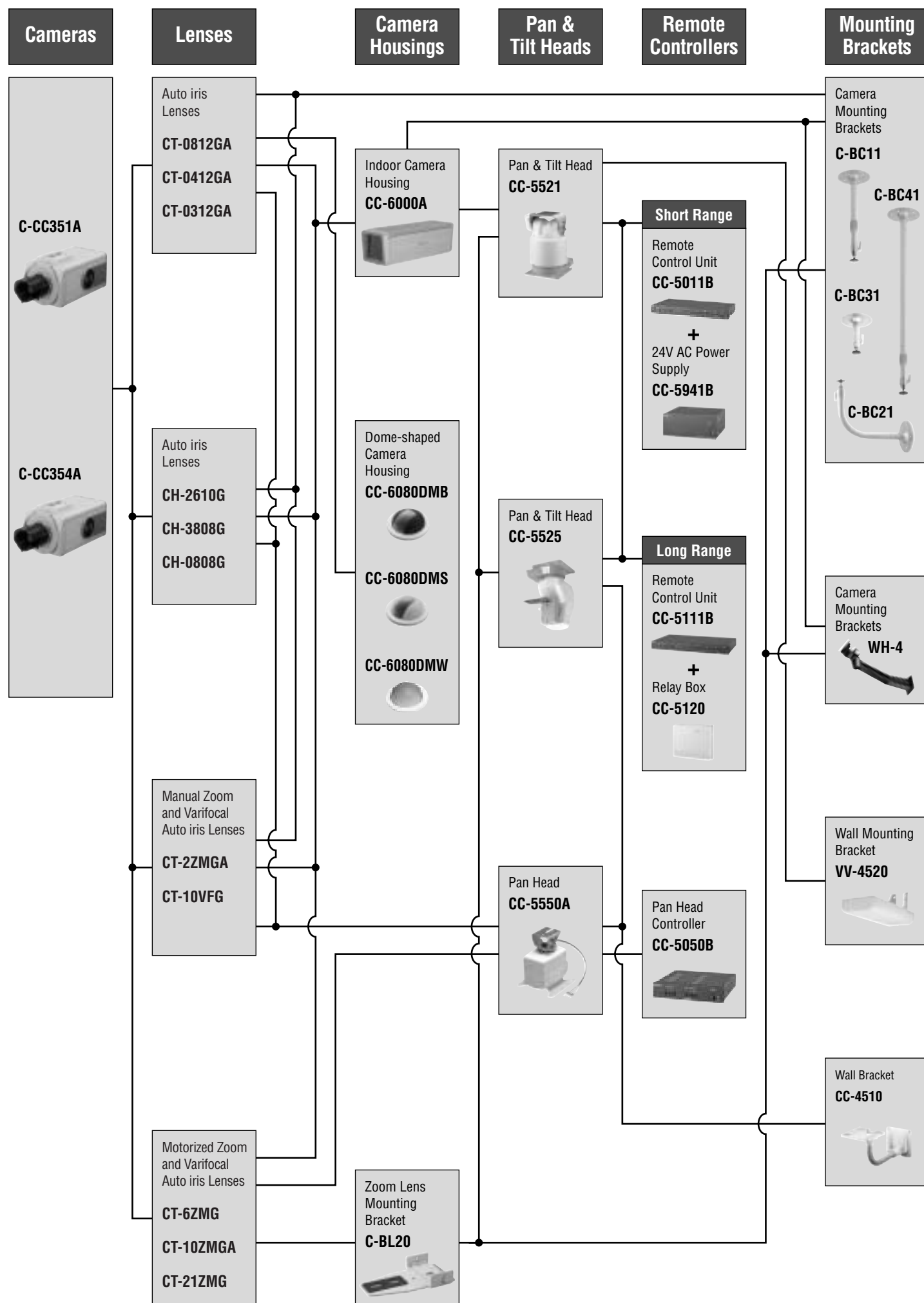
CC-5131B



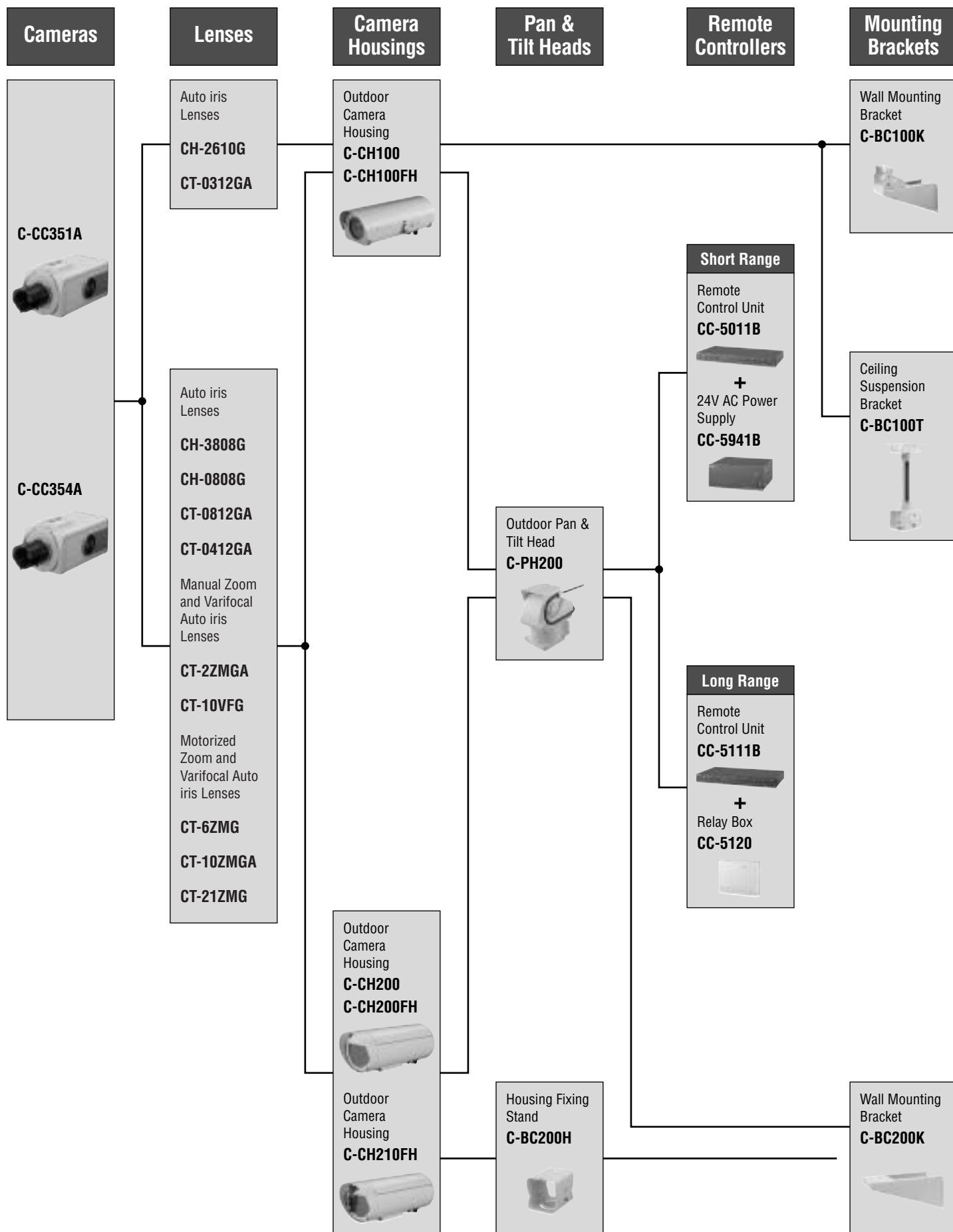
CC-5120



Selection Chart (Indoor Use)



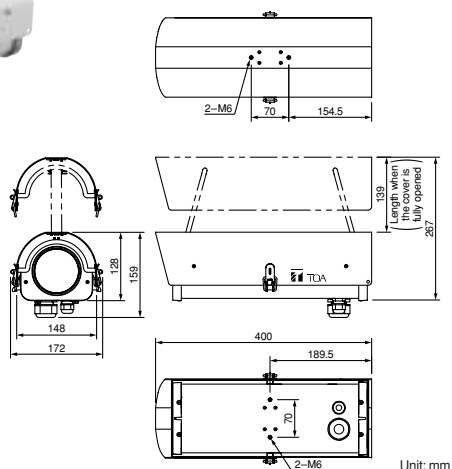
Selection Chart (Outdoor Use)



Camera Housings

C-CH100

Outdoor Camera Housing



Unit: mm

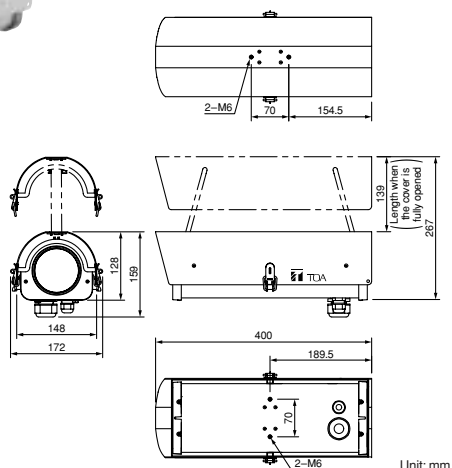
The C-CH100 is a rainproof camera housing that protects the CCTV camera with a standard lens or zoom lens from the direct sunlight, wind and rain when installed outdoors. It can be suspended from a ceiling or mounted to a wall using the mounting bracket.

SPECIFICATIONS

| | |
|------------------------------|---|
| Application | General outdoor environments (except seaside and industrial districts where the unit is subject to corrosion, and heights that expose the unit to strong wind pressure) |
| Operating Temperature | -10°C to +45° |
| Operating Humidity | Under 98% RH |
| Waterproof Function | IEC529 IP33 |
| Dimensions | 172 (W) × 159 (H) × 400 (D) mm |
| Internal Capacity | 80 (W) × 77 (H) × 305 (D) mm |
| Weight | 2 kg |
| Finish | Panel: Die-cast aluminum, light-beige, paint Other parts: Aluminum, off-white, paint |
| Accessories | Camera mounting screw × 1 set |
| Option | Ceiling suspension bracket: C-BC100T Wall mounting bracket: C-BC100K |

C-CH100FH

Outdoor Camera Housing



Unit: mm

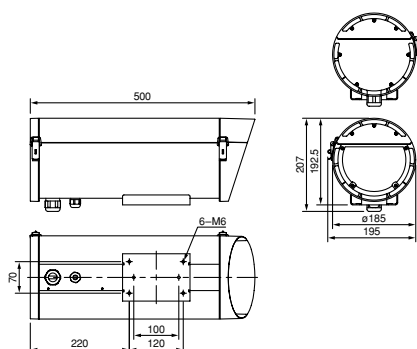
The C-CH100FH is a rainproof camera housing that protects the CCTV camera with a standard lens or zoom lens from the direct sunlight, wind and rain when installed outdoors. It comes with both a fan and heater, and can be suspended from a ceiling or mounted to a wall using the mounting bracket.

SPECIFICATIONS

| | |
|---|---|
| Power | 24 V AC, 50/60 Hz |
| Power Consumption | 25 W |
| Fan/heater operating temperature | Fan: Turns on at over 26°C Heater: Turns on at under approx. 10°C |
| Application | General outdoor environments (except seaside and industrial districts where the unit is subject to corrosion, and heights that expose the unit to strong wind pressure) |
| Operating Temperature | -10°C to +45° |
| Operating Humidity | Under 98% RH |
| Waterproof Function | IEC529 IP33 |
| Dimensions | 172 (W) × 159 (H) × 400 (D) mm |
| Internal Capacity | 80 (W) × 77 (H) × 305 (D) mm |
| Weight | 2.2 kg |
| Finish | Panel: Die-cast aluminum, light-beige, paint Other parts: Aluminum, off-white, paint |
| Accessories | Camera mounting screw × 1 set |
| Option | Ceiling suspension bracket: C-BC100T Wall mounting bracket: C-BC100K |

C-CH200

Outdoor Camera Housing



Unit: mm

The C-CH200 camera housing is designed to house a CCTV camera, fixed focal length lens, zoom lens and other components to protect them from the direct sunlight, wind and rain when they are installed outdoors.

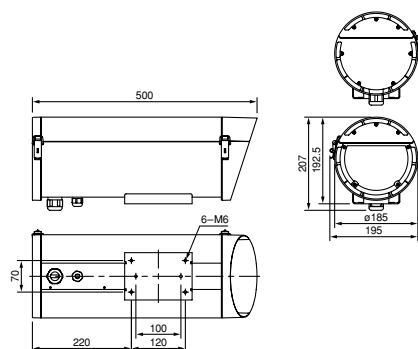
SPECIFICATIONS

| | |
|--|---|
| Operating Temperature | -10°C to +45° |
| Operating Humidity | 30% to 98% RH |
| Application | Indoors and outdoors (except seaside and industrial districts where the unit is subject to corrosion, and heights that expose the unit to strong wind pressure) |
| Waterproof/Dustproof Capability | IP54 |
| Finish | Unit: Aluminum extrusion, off-white, paint Panel: Die-cast aluminum, off-white, paint |
| Dimensions | 195(W) × 207(H) × 500(D) mm |
| Weight | 5.2 kg |
| Accessories | Camera mounting bolt × 2, Housing fixing bolt × 4, Washer...1 set, Coaxial cable for internal wiring × 1, Zoom lens cable for internal wiring × 1, Camera power supply cable (for 24 V) for internal wiring × 1 |
| Applicable Camera (option) | C-CC300 series, C-CC150A, C-CB20LA |
| Applicable Lens (option) | All lenses except ultra-wide angle lenses and special lenses |
| Option | Housing fixing stand: C-BC200H Wall mounting bracket: C-BC200K Pan/tilt head: C-PH200 |

C-CH200FH Outdoor Camera Housing



The C-CH200FH camera housing is designed to house a CCTV camera, fixed focal length lens, zoom lens and other components to protect them from the direct sunlight, wind and rain when they are installed outdoors. The C-CH200FH comes with a heater and a fan.



Unit: mm

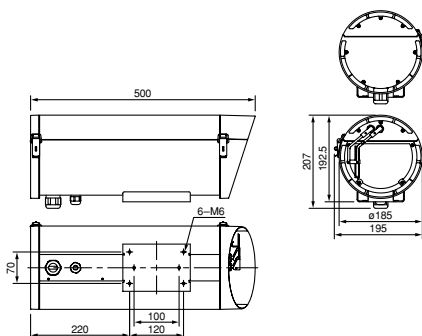
SPECIFICATIONS

| | |
|---|---|
| Power Source | 24 V AC, 50/60 Hz |
| Current Consumption | Fan: 4.6 W Heater: 19 W |
| Fan/heater Operating Temperature | Fan: Turns on at over 26°C Heater: Turns on at under 10°C |
| Operating Temperature | -20°C to +45°C (If the wiper driving section is frozen, the wiper does not correctly work.) |
| Operating Humidity | 30% to 98% RH |
| Application | Indoors and outdoors (except seaside and industrial districts where the unit is subject to corrosion, and heights that expose the unit to strong wind pressure) |
| Waterproof/Dustproof Capability | IP54 |
| Finish | Unit: Aluminum extrusion, off-white, paint Panel: Die-cast aluminum, off-white, paint |
| Dimensions | 195(W) × 207(H) × 500(D) mm |
| Weight | 5.4 kg |
| Accessory | Camera mounting bolt...2, Housing fixing bolt × 4, Washer...1 set, Coaxial cable for internal wiring × 1, Zoom lens cable for internal wiring × 1, Camera power supply cable (for 24 V) for internal wiring × 1 |
| Applicable Camera (option) | C-CC300 series, C-CC150A, C-CB20LA |
| Applicable Lens (option) | All lenses except ultra-wide angle lenses and special lenses |
| Option | Housing fixing stand: C-BC200H Wall mounting bracket: C-BC200K Pan/tilt head: C-PH200 |

C-CH210FH Outdoor Camera Housing



The C-CH210FH camera housing is designed to house a CCTV camera, fixed focal length lens, zoom lens and other components to protect them from the direct sunlight, wind and rain when they are installed outdoors. The C-CH210FH is equipped with a heater, a fan, a defroster, and a wiper.

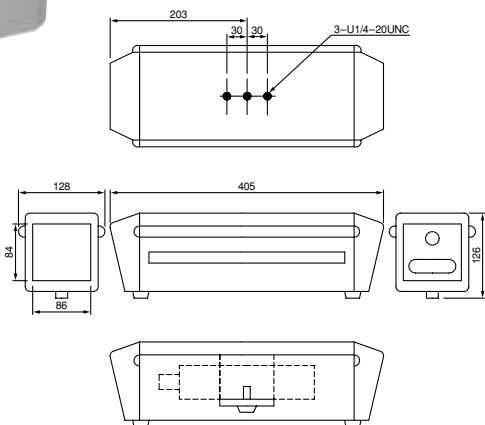


Unit: mm

SPECIFICATIONS

| | |
|---|---|
| Power Source | 24 V AC, 50/60 Hz |
| Current Consumption | Fan: 4.6 W Heater: 19 W Defroster: 5W Wiper: 2.3 W |
| Fan/heater Operating Temperature | Fan: Turns on at over 26°C Heater: Turns on at under 10°C Defroster: Turns on at under 30°C, and turns off at over 50°C |
| Operating Temperature | -20°C to +45°C (If the wiper driving section is frozen, the wiper does not correctly work.) |
| Operating Humidity | 30% to 98% RH |
| Application | Indoors and outdoors (except seaside and industrial districts where the unit is subject to corrosion, and heights that expose the unit to strong wind pressure) |
| Waterproof/Dustproof Capability | IP54 |
| Finish | Unit: Aluminum extrusion, off-white, paint Panel: Die-cast aluminum, off-white, paint |
| Dimensions | 195(W) × 207(H) × 500(D) mm |
| Weight | 6 kg |
| Accessory | Camera mounting bolt...2, Housing fixing bolt × 4, Washer...1 set, Coaxial cable for internal wiring × 1, Zoom lens cable for internal wiring × 1, Camera power supply cable (for 24 V) for internal wiring × 1 |
| Applicable Camera (option) | C-CC300 series, C-CC150A, C-CB20LA |
| Applicable Lens (option) | All lenses except ultra-wide angle lenses and special lenses |
| Option | Housing fixing stand: C-BC200H Wall mounting bracket: C-BC200K Pan/tilt head: C-PH200 |

CC-6000A Indoor Camera Housing



Installation Example

Unit: mm

The CC-6000A is an Indoor use camera housing.

SPECIFICATIONS

| | |
|------------------------------|---|
| Applications | Indoors |
| Operating Temperature | -10°C to +50°C |
| Finish | Front frame, Top cover: ABS resin, light cream Base: Pre-coated steel plate, beige |
| Dimensions | 128 (W) × 126 (H) × 405 (D) mm |
| Weight | 1.7 kg |
| Applicable Cameras | 1/3 type series cameras |
| Applicable Lenses | 1/3 type series lenses and zoom lenses |

Camera Housings

CC-6080DMB/CC-6080DMW/ CC-6080DMS

Dome-shaped Camera Housing



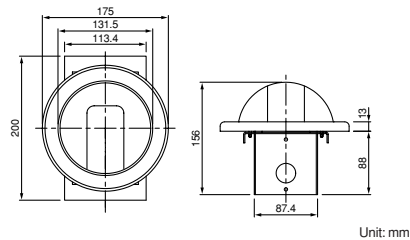
CC-6080DMB



CC-6080DMW



CC-6080DMS

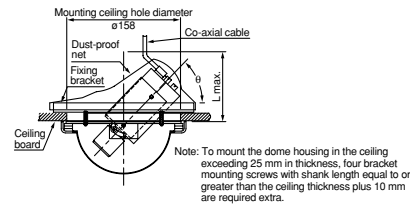


(Tilt range when the ceiling board is 9 mm thick)

| CAMERA | θ | L max. |
|----------------|----------|--------|
| C-CC300 series | 3' – 90' | 140 |

* The tilt angle narrows as the ceiling board increases in thickness. (The angles shown in the table above assume that the ceiling board is 9 mm thick.)

Mounting diagram



Designed for mounting in the ceiling, TOA's CC-6080 Series is a dome-shaped camera housing capable of accommodating a black/white or color surveillance camera.

SPECIFICATIONS

| | | |
|--------------------------|--|--|
| Tilt range | As shown in the table below. (ceiling board is 9 mm in thickness.) | |
| Finish | Dome: | CC-6080DMB: Acryl, treated in part with masking paint, black CC-6080DMW: Acryl, treated in part with masking paint, white CC-6080DMS: Acryl, aluminum vacuum evaporation (penetration rate of 35% – 50%) |
| | Frame: | ABS, ivory |
| | Bracket: | Steel plate cold commercial, 1.2 mm thick plating, black |
| Dimensions | $\phi 175$ (W) $\times 156$ (H) $\times 200$ (D) mm | |
| Weight | 520 g | |
| Applicable Lens | CT-0313G, CT-0412G, CT-0812G | |
| Applicable Camera | 1/3" camera series (made by TOA) | |

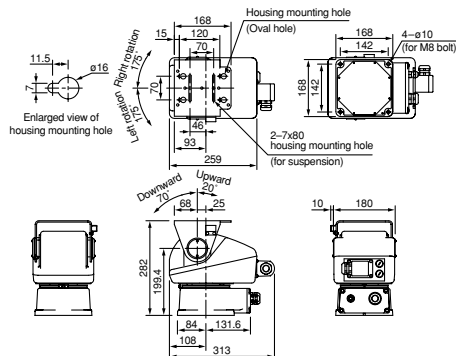
Pan & Tilt Heads

C-PH200

Outdoor Pan/Tilt Head



The C-PH200 is a rainproof and dustproof motorized pan/tilt head designed for both indoor and outdoor applications. Mounted with a camera housing containing CCTV camera and zoom lens, etc., the C-PH200 pan/tilt head can be rotated vertically and horizontally by remote control, thus greatly extending the camera's range of surveillance capability.



SPECIFICATIONS

| | |
|--|---|
| Power Source | 24 V AC, 50/60 Hz |
| Power Consumption | 46 VA |
| Input/Output Lines | Video signal: Applicable cable diameter: $\phi 4$ – $\phi 8$ mm Screw terminal for 3C–2V or 5C–2V Power control: Applicable cable diameter: $\phi 13$ – $\phi 18$ mm M3 screw terminal (12 P) with free terminal screw x 2 Output line: Connected to the housing using dedicated cable |
| Rotation Angle | Tilt: -70° to $+20^\circ \pm 5^\circ$ Pan: Over 340° (automatic reverse), $350^\circ \pm 5^\circ$ (manual operation) |
| Operation Speed (No load) | Tilt: $3^\circ \pm 0.5^\circ/s$ (50 Hz), $3.6^\circ \pm 0.6^\circ/s$ (60 Hz) Pan: $6^\circ \pm 0.5^\circ/s$ (50 Hz), $7.2^\circ \pm 0.6^\circ/s$ (60 Hz) |
| Rated Time | Tilt: 15 min, Pan: Continuous |
| Auto-Pan Life | 5000 hours or 200000 reverse operations |
| Load Rating | 11 kg (upright installation), 10 kg (indoor suspension) |
| Waterproof/Dustproof Capability | IP54 (Waterproof capability only applies to upright installation.) |
| Wind Pressure | Operable at average wind velocity of 40 m/s or less. Not destructed at maximum wind velocity of 60 m/s (provided the unit is installed at a height of 15 m above the ground and C-CH200 Series camera housings are mounted) |
| Application | Indoors and outdoors (except seaside and industrial districts where the unit is subject to corrosion, and heights that expose the unit to strong wind pressure)* |
| Operating Temperature | -10°C to $+50^\circ\text{C}$ (standard specifications and not frozen) |
| Operating Humidity | 30% to 90% RH |
| Finish | Die-cast aluminum and anti-corrosion aluminum plate, off-white, power coating |
| Dimensions | 190(W) \times 282(H) \times 313(D) mm |
| Weight | 10.2 kg |
| Applicable Model | Camera housing: C-CH200 series C-CH100 series |
| Option | Wall mounting bracket: C-BC200K |

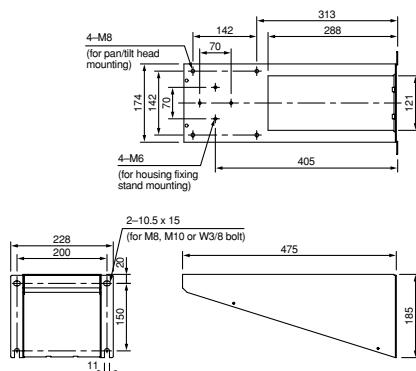
* Because a waterproof function is disabled, unit cannot be installed in a suspended position outdoors.

| | |
|----------------------------|---|
| Power Requirement | 6V DC |
| Service Space | Indoor |
| Ambient Temperature | -5°C to +45°C |
| Ambient Humidity | Less than 95% (Relative humidity) |
| Load Rating | Max. 3 kg (6.61 lb.) (Stand or Suspension) |
| Angular Travel | Pan 340° ±5° max. (Adjustable using external adjuster) |
| Speed | 6°/s ±0.5°/s |
| Life | 8,000 hours (continuous operation when 60% of rated load is mounted) or 100,000 motions in both ways. |
| Finish | Leather-tone |
| Weight | 0.9 kg (1.98 lb.) |
| Accessories | Ceiling flange...1, Plain washer...1, Spring washer...1, Camera mounting screw...1, Hexagon headed bolt for mounting main body...1, Pan head screw (spring washer) M4 x 12 for mounting ceiling flange...4, Solderless terminal for I/O cable connection...6 |

| | |
|-------------------------|--|
| Permissible Load | Under 10 kg |
| Application | Indoor or outdoor wall surface (exclude sea shores and industrial zones where the equipment easily becomes corroded, and the altitudes exposed to the strong wind) |
| Angle Adjustment | Horizontal: 360° Vertical: ±60° |
| Finish | Bracket: Stainless steel, off-white, paint Pipe: Stainless steel |
| Dimensions | 100 (W) × 295 (H) × 100 (D) mm |
| Weight | 830 g |
| Usable Housing | C-CH100 and C-CH100FH |

Head Mounting Brackets

C-BC200K Wall Mounting Bracket

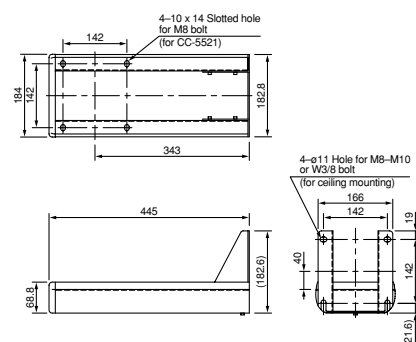


The C-BC200K Mounting Bracket is designed specifically for use in the wall-mounting of camera systems comprising the camera housing in combination with either the Pan/Tilt Head or the Housing fixing Stand. The C-BC200K is constructed of stainless steel and is designed to withstand prolonged use in severe outdoor environments without corrosion or marring of the unit's appearance.

SPECIFICATIONS

| | |
|-------------------------|--|
| Permissible Load | Under 20 kg |
| Wind Load | Maximum wind velocity 60 m/s (When C-CH200 or C-CH100 Series and C-PH200 are used) |
| Application | Outdoor (except seaside and industrial districts where the unit is subject to corrosion, and heights that expose the unit to strong wind pressure) |
| Finish | Stainless steel (SUS304), off-white, paint |
| Weight | 2.8 kg |
| Accessory | Pan/tilt head mounting bolt (SUS) ...2 Pan/tilt head mounting washer (SUS) ...1 set |
| Option | Pan/tilt head: C-PH200, CC-5521 Housing fixing stand: C-BC200H |

CC-4520 Wall Mounting Bracket

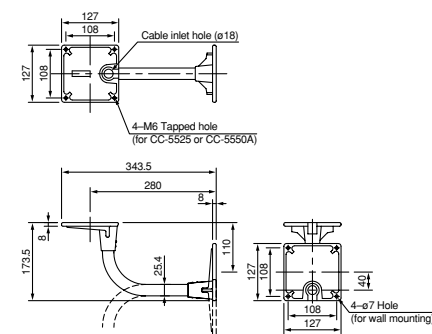


The TOA wall bracket model CC-4520 is used when pan/tilt head (model CC-5521) is fixed on the wall.

SPECIFICATIONS

| | |
|-------------------------|---|
| Service Space | Indoor |
| Load Rating | 10 kg max. |
| Applicable Model | CC-5521 |
| Finish | Zinc-plated steel plate, milky white, leather tone, paint |
| Weight | 3.2 kg |
| Accessory | For assembling wall bracket: M6 x 12 Hex-head bolt, Plain washer and Spring washer x 6 sets, M4 x 10 Round head screw with washer x 1 set For mounting pan-tilt head: M8 x 20 Hex-head bolt, Nut and washer x 4 sets, Plain washer x 8 |

CC-4510 Wall Bracket

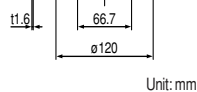


INSTALLATION EXAMPLES

The TOA wall bracket model CC-4510 is used when pan or pan/tilt head (model CC-5525, CC-5550A) is fixed on the wall.

SPECIFICATIONS

| | |
|--------------------------|---|
| Service Space | Indoor |
| Load Rating | 7 kg max. |
| Applicable Models | CC-5525, CC-5550A |
| Finish | Flange: Casted aluminum, off-white, leather tone Pipe: Rigid steel conduit, off-white, semi-glazed |
| Weight | 800 g |
| Accessory | M6 x 16 Hex-head bolt, Plain washer and Spring washer...4 sets |

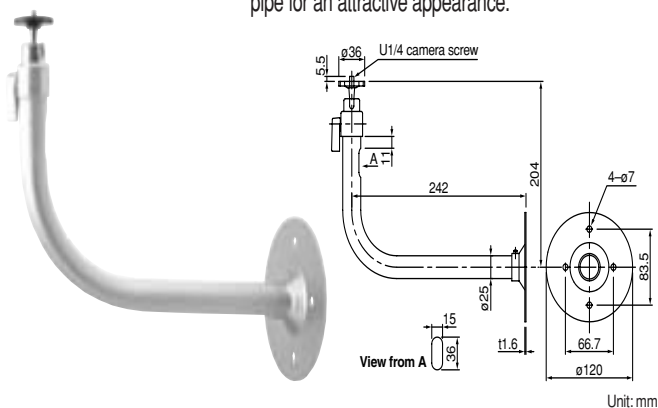


| | |
|-------------------------|--|
| Applications | Indoor use |
| Permissible Load | 4 kg |
| Angle Adjustment | Horizontal: +90° to -15° Vertical: 360° |
| Finish | Pipe: Aluminum, painted metallic silver Camera pedestal: ABS resin, sand gray Other parts: metallic silver |
| Weight | 360 g |
| Accessory | Fixing screw × 4 |



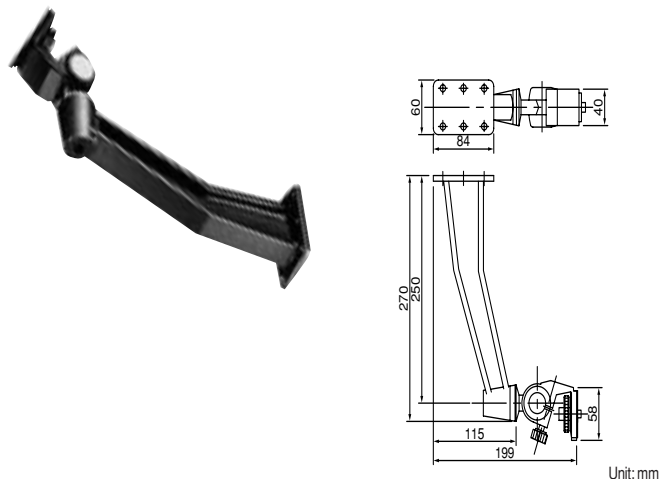
| | |
|-------------------------|--|
| Applications | Indoor use |
| Permissible Load | 4 kg |
| Angle Adjustment | Horizontal: +90° to -15° Vertical: 360° |
| Finish | Pipe: Aluminum, painted metallic silver Camera pedestal: ABS resin, sand gray Other parts: metallic silver |
| Weight | 520 g |
| Accessory | Fixing screw × 4 |

The C-BC21 allows for quick and easy installation of a camera and camera housing onto a wall with 360° horizontal and 90° vertical angles of adjustment. The coaxial cable can be inserted through the bracket pipe for an attractive appearance.



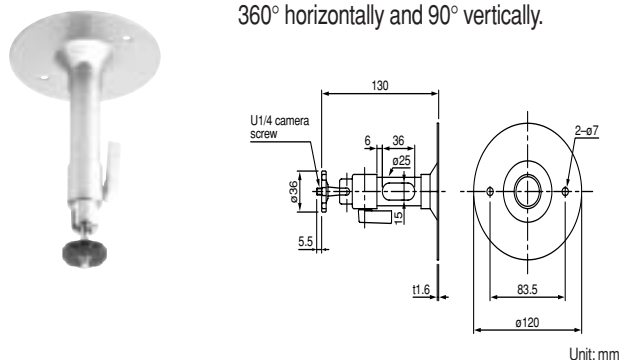
| | |
|-------------------------|--|
| Applications | Indoor use |
| Permissible Load | 4 kg |
| Angle Adjustment | Horizontal: +90° to -15° Vertical: 360° |
| Finish | Pipe: Aluminum, painted metallic silver Camera pedestal: ABS resin, sand gray Other parts: metallic silver |
| Weight | 340 g |
| Accessory | Fixing screw × 4 |

This bracket allows easy installation of a CCTV camera and CC-6000A indoor camera housing on to a wall. The maximum bracket load is 10kg.



| | |
|----------------------|-----------------------------------|
| Type | Ceiling/Wall mounting |
| Maximum Load | 10 kg |
| Panning Angle | Horizontal: 360° Vertical: 90° |
| Weight | 930 g |

The bracket allows easy ceiling installation of a camera and camera housing. The coaxial cable can be inserted through the bracket pipe for an attractive appearance. Once installed, the camera can be adjusted 360° horizontally and 90° vertically.



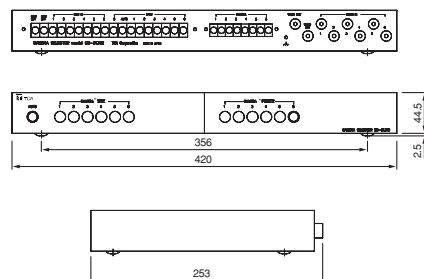
| | |
|-------------------------|--|
| Applications | Indoor use |
| Permissible Load | 4 kg |
| Angle Adjustment | Horizontal: +90° to -15° Vertical: 360° |
| Finish | Pipe: Aluminum, painted metallic silver Camera pedestal: ABS resin, sand gray Other parts: metallic silver |
| Weight | 240 g |
| Accessory | Fixing screw × 2 |

Camera Selector/Pan Head Controller

CC-5131B Camera Selector



The TOA's CC-5131B camera selector is intended for use with the CC-5111B remote control unit. Up to 6 cameras and their accompanying CC-5120 relay boxes may be linked to the camera selector. Bridging connection of the CC-5131B is possible to increase the number of linked cameras. Switches are provided for selecting each camera and for camera power. A complete set of terminals is also provided for quick set-up and reliable operation. The camera selector can be mounted on a standard rack cabinet.

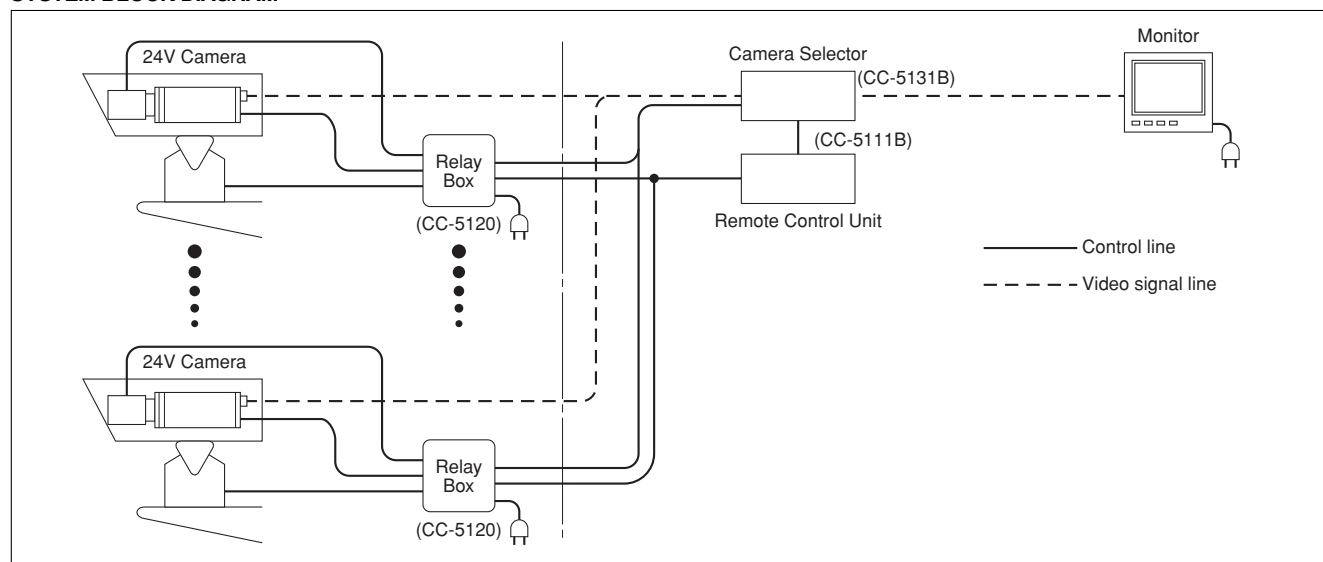


Unit: mm

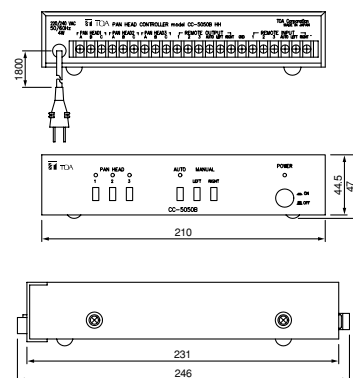
SPECIFICATIONS

| | |
|------------------------------|---|
| Control Output | 6 make-contact for turning the cameras on or off. 6 make-contact for selecting the cameras to be controlled remotely plus 1 output for extending the camera selector. 6 make-contact for selecting the cameras to be monitored plus 1 output for autoswitching M4 screw terminal, distance between barriers: 8.8 mm |
| Video Input | 6 inputs for composite video signal 1.0V (p-p) plus 1 input for extending the camera selector. (All inputs excepting the selected input are terminated with 75Ω.) (BNC connector) |
| Video Output | 1 output with composite video signal 1.0V (p-p) plus 1 output for extending the camera selector (BNC connector) |
| Operating Temperature | -10°C to +50°C |
| Finish | Panel: Aluminum extrusion, black, 30% gloss Case: Pre-coated steel plate, black, 30% gloss |
| Dimensions | 420 (W) x 47 (H) x 253 (D) mm |
| Weight | 2.4 kg |
| Option | Rack-mounting bracket: MB-15B |

SYSTEM BLOCK DIAGRAM



CC-5050B Pan Head Controller



Unit: mm

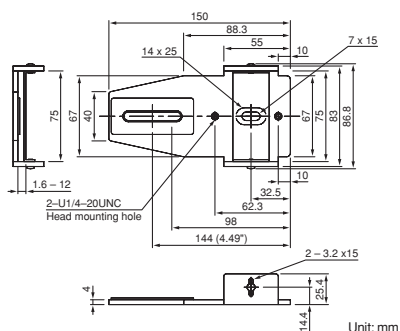
The TOA CC-5050B Pan Head Controller permits to remotely control up to three CC-5550A pan heads.

SPECIFICATIONS

| | |
|----------------------------|--|
| Power Requirement | HH: 220/240 V AC, 50/60 Hz L: 120 V AC, 50/60 Hz |
| Power Consumption | 4 VA |
| Control Output | DC 6 V, 100 mA max. M3 screw terminal, distance between barriers: 6 mm |
| Control Facilities | Panning (Left/Right/Auto) Pan head selection (3 pan heads) Remote input (Pan head selection 1 to 3 panning [Left/Right/Auto]) Remote output (Pan head selection 1 to 3 panning [Left/Right/Auto]) |
| Ambient Temperature | -10°C to +50°C |
| Finish | Panel: Aluminum extrusion, black, 30% glossy Case: Pre-coated steel plate, black, 30% glossy |
| Dimensions | 210 (W) x 47 (H) x 246 (D) mm |
| Weight | 2 kg |
| Accessory | Fuse (0.5 A) x 1 |

Zoom Lens Mounting Bracket

C-BL20 Zoom Lens Mounting Bracket



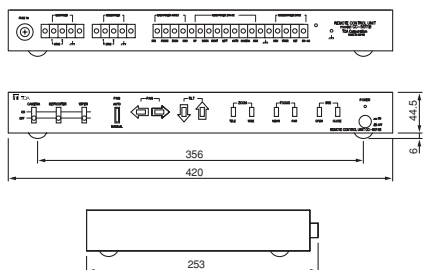
The C-BL20 zoom lens mounting bracket is used for securely reinforcing to mount the camera with a zoom lens, and for mounting this camera and zoom lens on the pan/tilt head.

SPECIFICATIONS

| | |
|---------------------------|--|
| Finish | Aluminum t4.0 sand gray |
| Weight | 160 g (0.35 lb.) |
| Accessories | Camera mounting (U1/4 – 20UNC bolt) × 1 M6 washer × 1 |
| Applicable Cameras | 1/3" series cameras |
| Applicable Lenses | CT-8ZMG, CT-P8XMG, CT-P12ZMG |
| Applicable Heads | CC-5521, CC-5525 |

Remote Control Units (short range)

CC-5011B Remote Control Unit

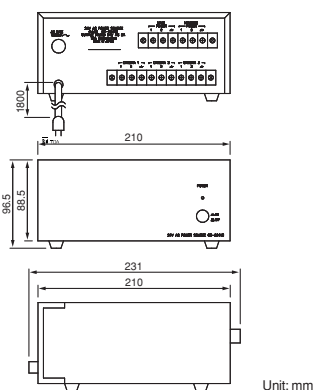


The TOA's CC-5011B remote control unit is designed for highly effective observation from a short distance away. The CC-5011B provides the convenience of direct 24V AC operation when used in combination with the CC-5941B 24V power supply unit. At the touch of a remote control switch you have complete command auto/manual & left/right pan, tilt, zoom, focus and iris settings. The remote control unit can be mounted on a standard rack cabinet.

SPECIFICATIONS

| | |
|----------------------------|--|
| Power Input | 24V AC, 50/60Hz (for motorized Pan/Tilt unit, camera power supply and motorized zoom lens) |
| Housing Power: | 24V AC, 50/60Hz (for camera housing) |
| Control Output | Make-contact for each control |
| Control | Motorized Pan/Tilt Unit: Pan (RIGHT/LEFT/AUTO), TILT (UP/DOWN) Camera Housing: Defroster (ON-OFF), Wiper (ON-OFF) Camera Power: ON-OFF Motorized Zoom Lens: Zoom (WIDE/TELE), Focus (FAR/NEAR), Iris (CLOSE/OPEN) |
| Ambient Temperature | Indoor use, -10°C to +50°C |
| Finish | Panel: Aluminum extrusion, black, 30% gloss Case: Pre-coated steel plate, black, 30% gloss |
| Dimensions | 420 (W) x 47 (H) x 253 (D) mm |
| Weight | 3.3 kg |
| Option | 1-size rack-mounting bracket: MB-15B |
| Power Supply Unit | CC-5941B |

CC-5941B 24 V AC Power Supply

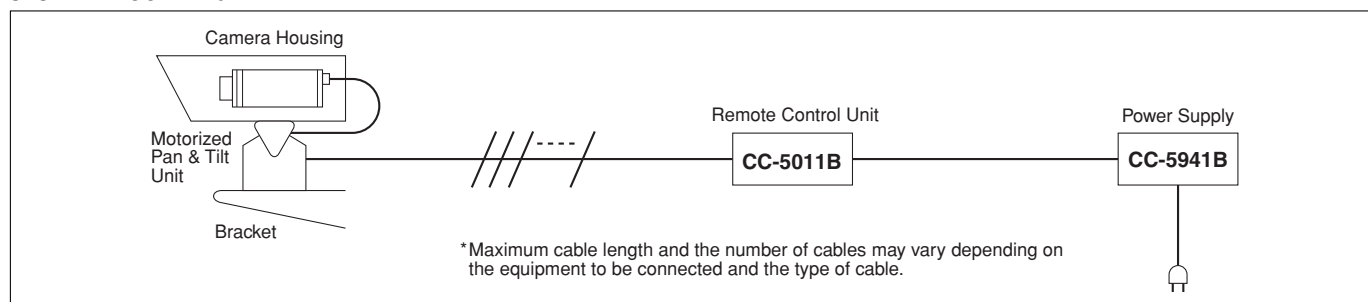


The CC-5941B is an adaptor supplies power to up to ten 24V AC camera or the 24V AC power to the CC-5011B short-distance remote control unit for a CCTV camera system.

SPECIFICATIONS

| | |
|----------------------------|--|
| Power requirement | AC Mains, 50/60Hz |
| Power Consumption | 135W (When operating camera, motorized zoom lens, pan/tilt unit, fan, heater and defroster.) |
| Output Power | 24V AC, 5A, 50/60Hz for camera and remote control unit M4 screw terminal, distance between barriers: 8.8mm |
| Ambient Temperature | Indoor use, -10°C to +50°C |
| Finish | Panel: Aluminum extrusion, black, 30% gloss Case: Pre-coated steel plate, black, 30% gloss |
| Dimensions | 210 (W) x 97.5 (H) x 231 (D) mm |
| Weight | 4.1 kg |
| Accessory | Fuse (2A) × 1 |
| Option | 1-size rack-mounting bracket: MB-23B-BK 2-size rack-mounting bracket: MB-23b-J |

SYSTEM BLOCK DIAGRAM

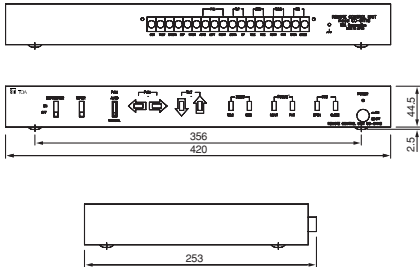


Remote Control Units (long range)

CC-5111B Remote Control Unit (required CC-5120 relay box)



The TOA's CC-5111B remote control unit and CC-5120 relay box provide highly effective surveillance from even a long distance away. The CC-5111B is designed for use with the CC-5120 and can control the housing defroster and wiper, pan/tilt head and motorized zoom lens remotely. The CC-5120 can supply the power to the camera, housing pan/tilt head and zoom lens. The remote control unit can be mounted on a standard rack, while the relay box is a wall mounting type.



Unit: mm

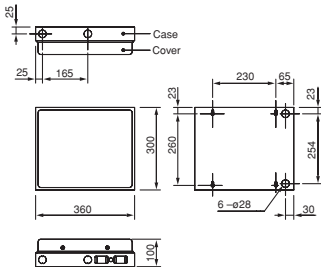
SPECIFICATIONS

| | |
|--------------------------|---|
| Power Input | Supplied from relay box CC-5120 for TALLY |
| Control Output | Make-contact for each control |
| Control | |
| Motorized Pan/Tilt Unit: | Pan (RIGHT/LEFT/AUTO), TILT (UP/DOWN) |
| Camera Housing: | Defroster (ON-OFF), Wiper (ON-OFF) |
| Camera Power: | ON-OFF |
| Motorized Zoom Lens: | Zoom (WIDE/TELE), Focus (FAR/NEAR), Iris (CLOSE/OPEN) |
| Ambient Temperature | Indoor use, -10°C to +50°C |
| Color | Black |
| Dimensions | 420 (W) x 47 (H) x 253 (D) mm |
| Weight | 2.3 kg (5.07 lb.) |
| Option | 1-size rack-mounting bracket: MB-15B |

CC-5120 Relay Box



Used in combination with CC-5111B remote control unit, this relay box enables remote control of CCTV camera operation.

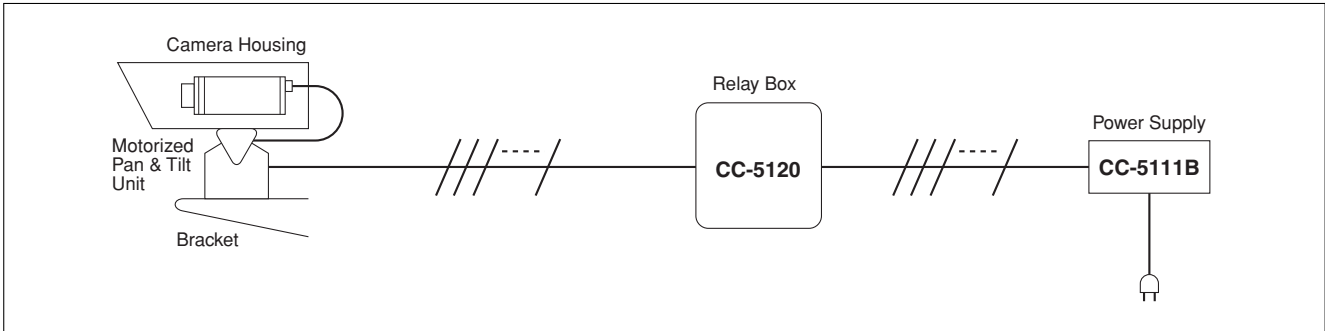


Unit: mm

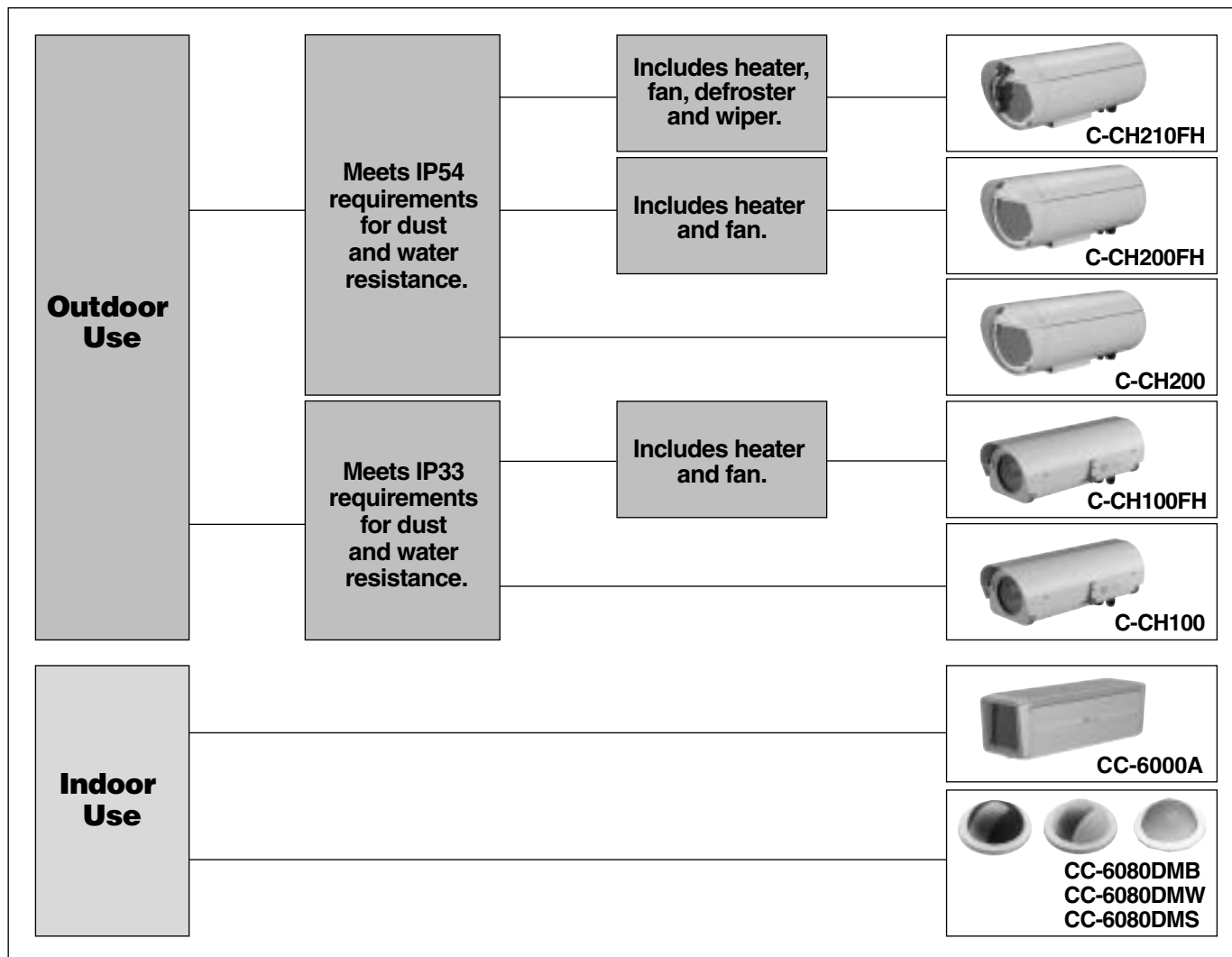
SPECIFICATIONS

| | |
|--------------------------|---|
| Power requirement | AC Mains, 50/60Hz |
| Power Consumption | 135W (When operating camera, motorized zoom lens, pan/tilt unit, fan, heater and defroster.) |
| Control Inputs | |
| Motorized Pan/Tilt Unit: | Pan (RIGHT/LEFT/AUTO), TILT (UP/DOWN) |
| Camera Housing: | Defroster (ON-OFF), Wiper (ON-OFF) |
| Camera Power: | ON-OFF |
| Motorized Zoom Lens: | Zoom (WIDE/TELE), Focus (FAR/NEAR), Iris (CLOSE/OPEN) |
| Control Output | 24V AC, 50/60Hz for motorized pan/tilt unit, camera housing and camera power supply DC ±6V, 0.15A for motorized zoom lens 1 power supply for TALLY lamp |
| Ambient Temperature | Indoor use, -10°C to +50°C |
| Color | Beige |
| Dimensions | 360 (W) x 300 (H) x 100 (D) mm |
| Weight | 7.8 kg |

SYSTEM BLOCK DIAGRAM



Housing Selection Chart



Pan & Tilt Head Selection Chart

