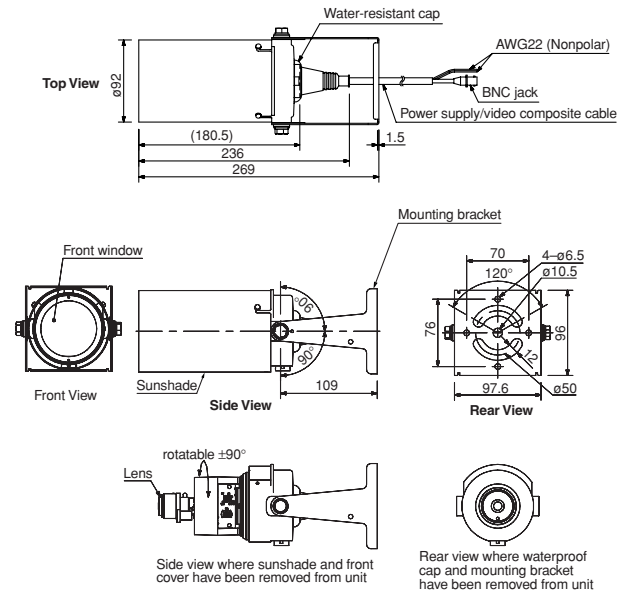


C-CV44-3 Outdoor Color Camera



APPEARANCE AND DIMENSIONAL DIAGRAM



Unit: mm

DESCRIPTION

The TOA C-CV44-3 Outdoor Color Camera combines rugged versatility and crisp visibility. The unit has been comprehensively designed and constructed with a dust/water resistant (IP66) housing to stand up to even a harsh outdoor-use environment. Three-axis camera positioning capability allows easy and accurate camera positioning. Either 24V AC or 12V DC operation allows for greater application flexibility. An easily viewable operating level is ensured by the combination of a 1/4 type IT-CCD image device and a lens with a 36 – 71.9 degree horizontal viewing angle and a 26.8 – 52 degree vertical viewing angle, plus backlight compensation and non-flickering operation. Horizontal resolution is more than 480 lines NTSC, or 470 lines PAL. An adjustment switch is provided for easy focusing, with no need for an ND filter.

FEATURES

- 2X varifocal lens included.
- Outdoor use (comply with IP66).
- Horizontal resolution exceeds 480 lines for NTSC and 470 lines for PAL.
- Backlight compensation and flicker-free function for easier viewing.
- Wide-ranging view angles for more effective monitoring.
- Easy focus adjustment without ND filter.
- Full Camera positioning in 3-axis makes it easy to achieve the optimal camera position.



NTSC/PAL

SPECIFICATIONS (NTSC)

Power Source	24V AC, 50/60Hz or 12V DC
Power Consumption	2W (maximum current:800 mA)
Image Device	1/4 type IT-CCD
Number of Effective Pixels	768 (H) × 494 (V) (380,000 pixels)
Scanning System	2:1 interlace
Scanning Frequency	Horizontal: 15.734kHz, Vertical: 59.94Hz
Monitor Output	VBS 1.0V (p-p) 75Ω, RCA pin jack
Video Output	VBS 1.0V (p-p) 75Ω, water-resistant connector
Synchronizing System	Internal synchronization
Resolution	Horizontal: 480 lines (at center), Vertical: 350 lines (at center)
S/N Ratio	48dB
Minimum Illumination	3 lx (50 IRE)
White Balance Mode	ATW
Focal Length	f = 3.0mm – 6.0mm
Maximum Aperture Ratio	1:1.2 – 1.5
Iris	Auto-iris
Angle of View	Horizontal: 71.9° – 36°, Vertical: 52° – 26.8°
Control Switch	ON/OFF (used for focus adjustment)
Other Function	Backlight compensation, Shutter speed (1/60, 1/100), Iris control
Dust/Water Protection	IP66
Operating Temperature	–10°C to +50°C
Operating Humidity	Under 90% RH (no condensation)
Finish	Front cover, rear cover, sunshade: Aluminum, light gray, paint Mounting bracket: Stainless steel, light gray, paint
Dimensions	ø92 × 236 (D)mm (excluding mounting bracket)
Weight	1.1kg
Accessories	Mounting bracket × 1, Cord with water-resistant cap (2m) × 1, Bracket mounting bolt (with washer), Insulating spacer × 2

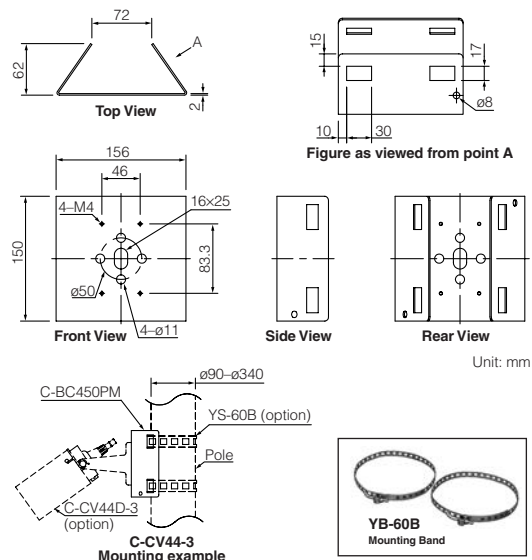
SPECIFICATIONS (PAL)

Power Source	24V AC, 50/60Hz or 12V DC
Power Consumption	2W (maximum current:800 mA)
Image Device	1/4 type IT-CCD
Number of Effective Pixels	752 (H) × 582 (V) (440,000 pixels)
Scanning System	2:1 interlace
Scanning Frequency	Horizontal: 15.625kHz, Vertical: 50Hz
Monitor Output	VBS 1.0V (p-p) 75Ω, RCA pin jack
Video Output	VBS 1.0V (p-p) 75Ω, water-resistant connector
Synchronizing System	Internal synchronization
Resolution	Horizontal: 470 lines (at center), Vertical: 410 lines (at center)
S/N Ratio	48dB
Minimum Illumination	3 lx (350mV)
White Balance Mode	ATW
Focal Length	f = 3.0mm – 6.0mm
Maximum Aperture Ratio	1:1.2 – 1.5
Iris	Auto-iris
Angle of View	Horizontal: 71.9° – 36°, Vertical: 52° – 26.8°
Control Switch	ON/OFF (used for focus adjustment)
Other Function	Backlight compensation, Shutter speed (1/50, 1/120), Iris control
Dust/Water Protection	IP66
Operating Temperature	–10°C to +50°C
Operating Humidity	Under 90% RH (no condensation)
Finish	Front cover, rear cover, sunshade: Aluminum, light gray, paint Mounting bracket: Stainless steel, light gray, paint
Dimensions	ø92 × 236 (D)mm (excluding mounting bracket)
Weight	1.1kg
Accessories	Mounting bracket × 1, Cord with water-resistant cap (2m) × 1, Bracket mounting bolt (with washer), Insulating spacer × 2

ARCHITECTURAL AND ENGINEERING SPECIFICATIONS

The outdoor color camera shall operate on 24V AC or 12V DC power and shall be equipped with a 1/4 type IT-CCD image device and a lens with a 36 – 71.9 degree horizontal viewing angle and a 26.8 – 52 degree vertical viewing angle. Horizontal resolution shall be greater than 480 lines NTSC, or 470 lines PAL. The camera shall be equipped with a backlight compensation function and shall operate without flickering. An adjustment switch shall be provided for focusing without requiring an ND filter. The outdoor camera unit shall be designed to withstand outdoor use and shall have dust and water-resistant (IP66) construction. For easy, optimally accurate camera installation, full camera positioning in three axes shall be possible. The outdoor color camera shall be TOA model C-CV44-3.

C-BC450PM Pole Mounting Bracket



Designed to mount the C-CV44-3 on a pole in conjunction with the optional YS-60B.

SPECIFICATIONS

Applicable Pole Diameter	ø90 – ø340mm
Finish	Stainless steel
Dimensions	156 (W) × 150 (H) × 62 (D)mm
Weight	660g
Applicable Camera	C-CV44-3, C-CV854D-3
Option	Mounting band: YS-60B