
TOA CCTV SYSTEMS

INDOOR PAN AND TILT HEAD

CC-5521



DESCRIPTION

The TOA CC-5521 indoor pan and tilt head can be used to rotate and elevate a CCTV camera weighting up to 11 kg under normal mounting conditions, or a camera weighting up to 10 kg that is hung from a ceiling. The CC-5521 provides remote control camera travel of 340° pan and 65° up-down tilt. Limiting cams for both pan and tilt are externally adjustable. Auto pan is also provided on the CC-5521.

FEATURES

1. Designed for effective, wide-area coverage.
2. Adjustable panning angle of 340° and tilting angle of 65° up and down.
3. Panning speed of 6°/sec and tilting speed of 3°/sec (at 50 Hz).
4. Low voltage (24 V AC) operation.
5. Rugged, dependable construction for indoor use.

SPECIFICATION

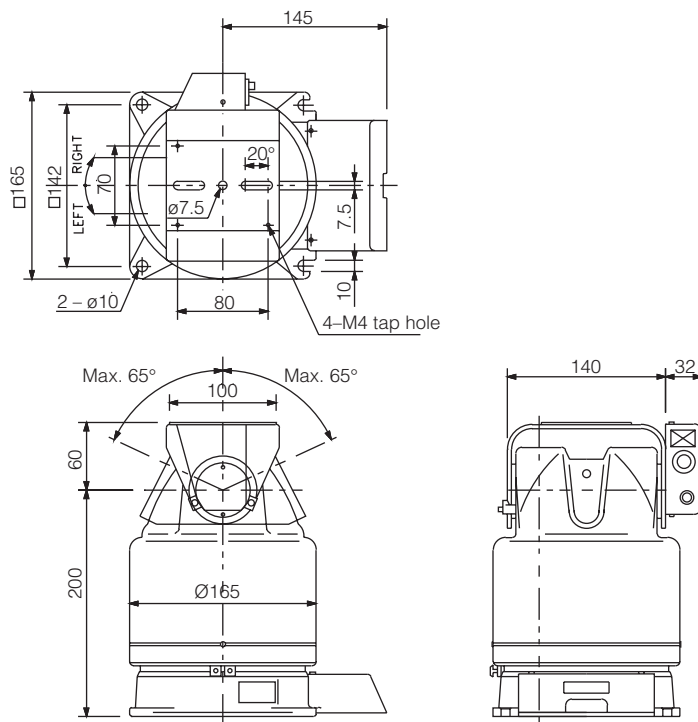
Model	CC-5521
Applicable place	Indoor use
Load rating	Upright mounting : 11 kg Inverted mounting : 10 kg Based on C.G. to the camera mount center distance of 70 mm and off center displacement of 25 mm. The tilting function may not work beyond the limited distances. (C.G. = center of gravity)
Ambient temperature	-10°C to +45°C
Ambient humidity	95 % or less, relative humidity
Power requirements	24 V AC±10 %, 50/60 Hz, single phase
Power consumption	Max. 40 VA
Weight	Approx. 5 kg
Main skin material	Corrosion resistant aluminum sheet, cast aluminum alloy, synthetic resin (ABS)
Finish	Metal part : Beige leatherette and semi-glossy black texture Resin part : Ivory yellow, leatherette texture

OPERATION

		Tilting	Panning
ARC of travel		65° ±3 up 65° ±3 down	340° or more 330° ±5° (auto-pan)
Speed	50 Hz	Approx. 3°/sec. ±0.5/sec.	Approx. 6°/sec. 0.5°/sec.
	60 Hz	Approx. 3.6°/sec. ±0.6/sec.	Approx. 7.2°/sec. 0.6/sec.

360° is available removing a limit cam.

APPEARANCE AND DIMENSIONAL DIAGRAMS



Unit: mm

STANDARD ACCESSORIES

1. Input/Output Connectors and Terminals

- Spade lug terminal (L): for input (14 pcs.)
- Spade lug terminal (S): for output (3 pcs.)
- Coaxial cable with BNC connectors on both ends (1 pcs.)
- 4-pin connector (Mas 4100): for zoom lens (1 pcs.)

2. Camera Mounting Bolts and Washers

- Hexagon head bolt: W 1/4 x 14 (2 pcs.)
- Spring washer ø6 mm (2 pcs.)
- Plain washer ø6 mm (3 pcs.)
- Insulation bushing (3 pcs.)