

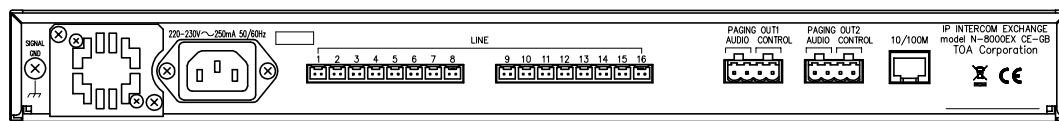


The IP Intercom Exchange uses packet audio technology to permit connection of up to sixteen N-8000 Series stations, and features two outputs for public address paging. Hands-free conversation is possible between stations. Moreover, the exchange is equipped with a networking interface, allowing up to 192 exchanges to be connected over a network using additional IP intercom exchanges. The Exchange can be mounted in an EIA standard rack (1-unit size) or to a wall using the supplied bracket.

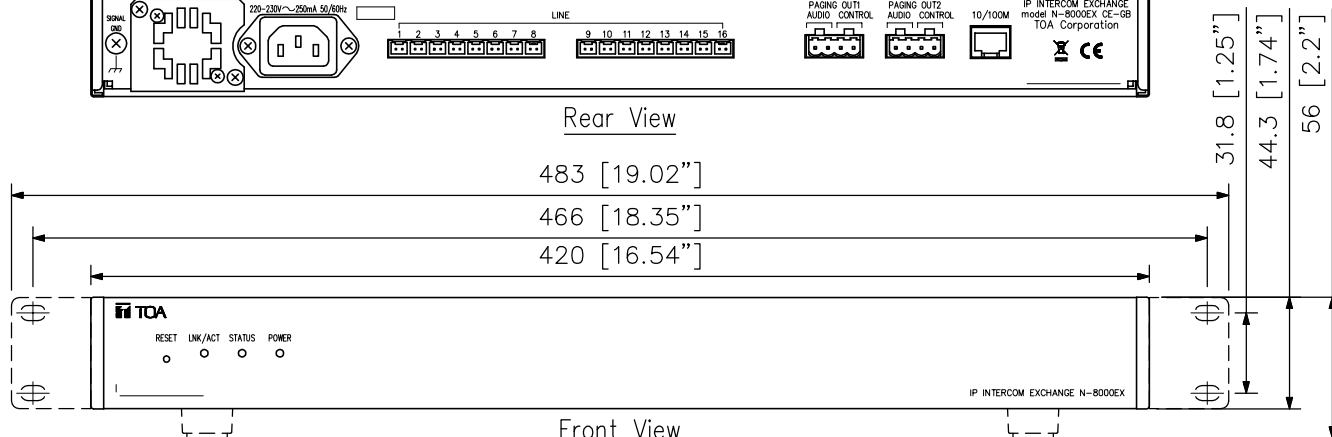
* 0 dB = 1 V

DWG No: GN-01QB1-1

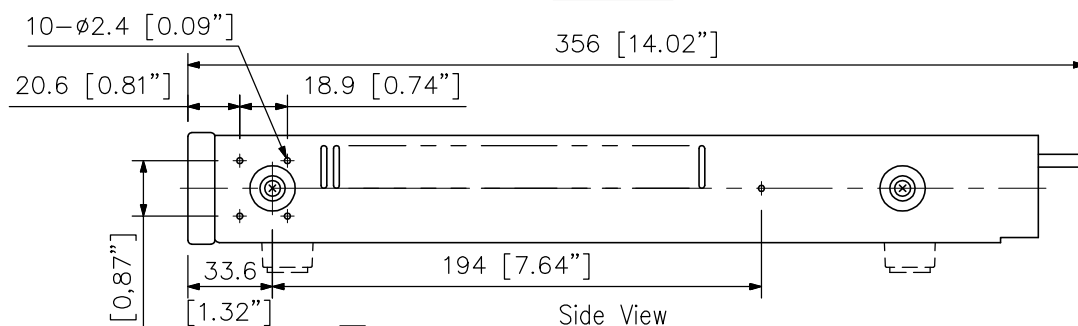
■ APPEARANCE



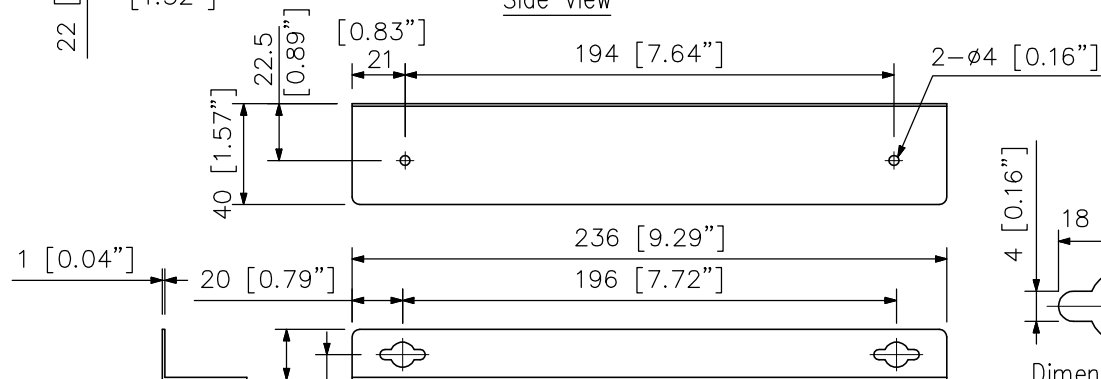
Rear View



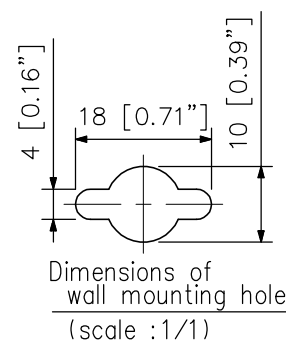
Front View



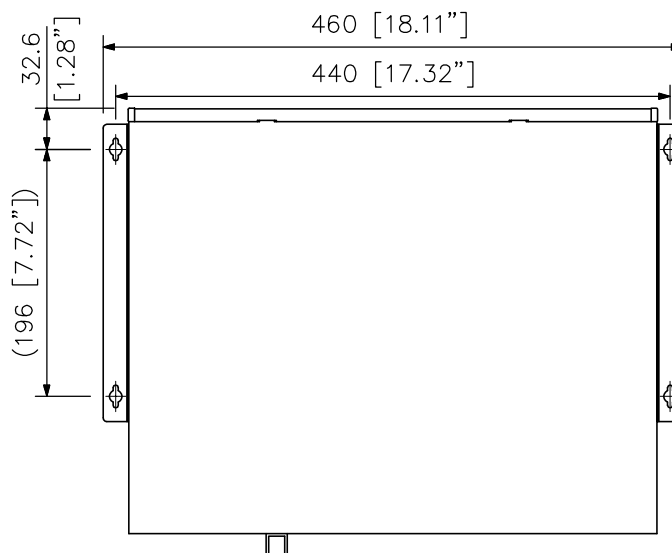
Side View



Wall mounting bracket
(accessory)



Wall mounting installation
(scale: 1/6)



UNIT:mm SCALE:1/3